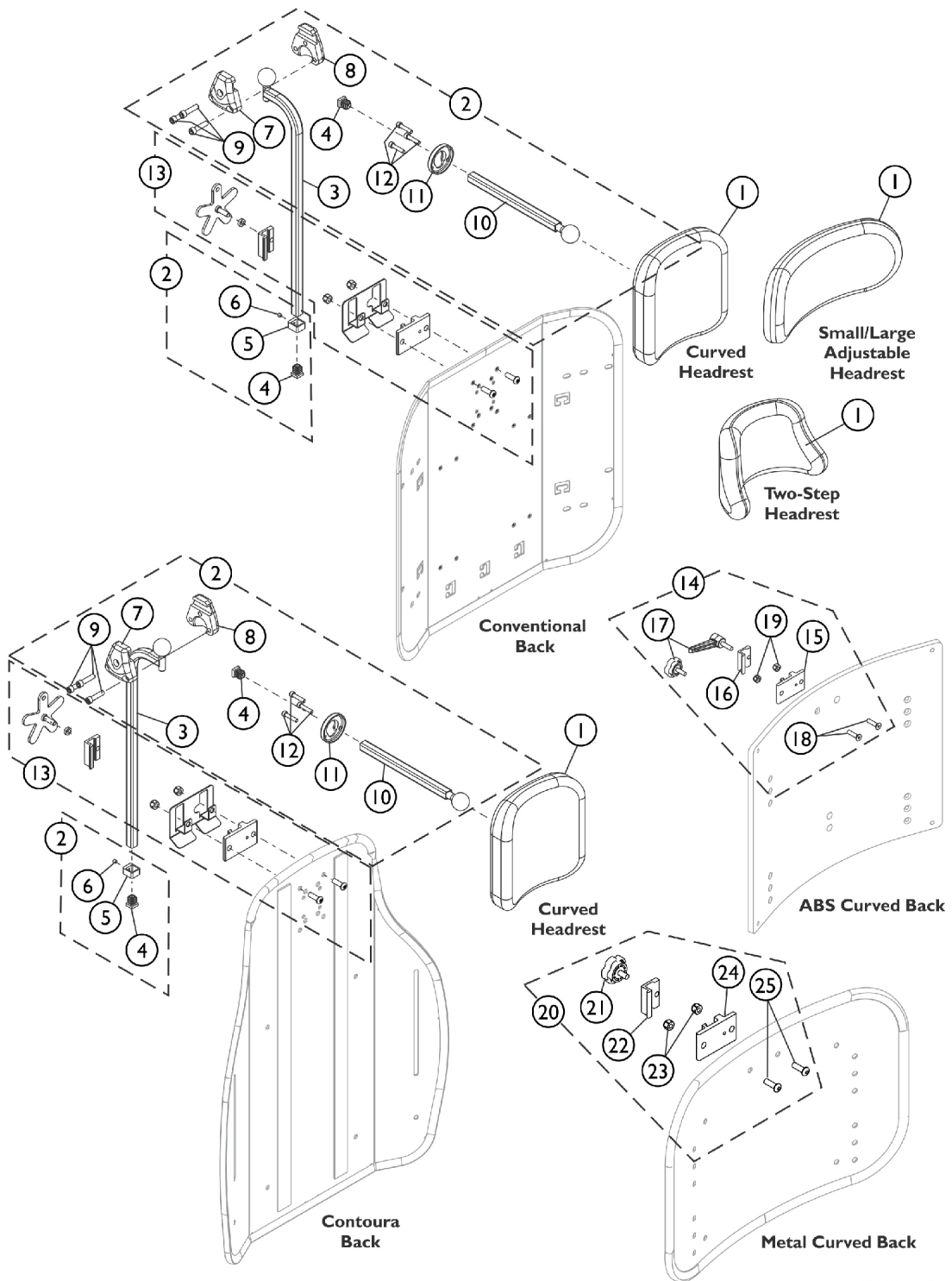


# Headrest Support Assembly, Tarsys



SHEP\_095A

## Headrest Support Assembly, Tarsys

| Item Number | Note  | Part Number | Description  | Quantity Per |          |
|-------------|-------|-------------|--|--------------|----------|
|             |       |             |  | Package      | Assembly |
| 1           |       | 0127700     | Headrest, Curved (6" W x 7" H)   | 1            | 1        |
| 1           |       | 0128000-NLA | NLA - Headrest, Two-Step (8-1/2" W x 5-1/2" H)                             | 1            | 1        |
| 1           |       | 0022600     | Kit, Headrest w/ Screws, Adjustable, Small, Otto Bock<br>(9" W x 3-1/2" H) | 1            | 1        |
| 1           |       | 0022400     | Kit, Headrest w/ Screws, Adjustable, Large, Otto Bock (12" W x 6" H)       | 1            | 1        |
| 2           | A     | 0197024     | Fixture Assembly, Offset Support   | 1            | 1        |
| 3           |       | 0271524-NLA | NLA - Tube, Offset Fixture, Black  | 1            | 1        |
| 4           |       | 1077076-NLA | NLA - Plug Button, Square (1/2")   | 1            | 2        |
| 5           |       | 0271124-NLA | NLA - Collar, Offset Fixture Tube  | 1            | 1        |
| 6           |       | 0288606-NLA | NLA - Screw, Set Socket Cup Point (#10-24 x 3/16")                         | 1            | 1        |
| 7           |       | 0271224     | Half Clamp, Non-Threaded Holes   | 1            | 1        |
| 8           |       | 0271324     | Half Clamp, Threaded Holes   | 1            | 1        |
| 9           |       | 1027268     | Screw, Allen Head (1/4-20 x 1")  | 1            | 3        |
| 10          |       | 0271424-NLA | NLA - Tube, Fixture Adjustment   | 1            | 1        |
| 11          |       | 0283724-NLA | NLA - Ring, Fixture Clamp  | 1            | 1        |
| 12          |       | 0067006-NLA | NLA - Screw, Cap, Socket Head (#10-32 x 1/2")                              | 1            | 3        |
| 13          | B     | 1124686     | Kit, Headrest Mounting Hardware  | 1            | 1        |
| 14          | F,C,G | 0273100     | Kit, Headrest Clamp, Lever Style   | 1            | 1        |
| 15          | D     | 0237422-NLA | NLA - Clamp, Small Bottom Half   | 1            | 1        |
| 16          | D     | 0237522-NLA | NLA - Clamp, Small Top Half  | 1            | 1        |
| 17          |       | 1072439-NLA | NLA - Knob, Adjustment, Black (3/4" L Threads)                             | 1            | 1        |
| 18          |       | 0288706-NLA | NLA - Screw, Socket, Flat Head (1/4-20 x 1")                               | 1            | 2        |
| 19          |       | 1025736     | Locknut (1/4-20)   | 1            | 2        |
| 20          | E     | 1160332     | Kit, Headrest Clamp, Knob Style  | 1            | 1        |
| 21          |       | 1072439-NLA | NLA - Knob, Adjustment, Black (3/4" L Threads)                             | 1            | 1        |
| 22          | D     | 0237522-NLA | NLA - Clamp, Small Top Half  | 1            | 1        |
| 23          |       | 1025736     | Locknut (1/4-20)   | 1            | 2        |
| 24          | D     | 0237422-NLA | NLA - Clamp, Small Bottom Half   | 1            | 1        |
| 25          |       | 1009838     | Screw, Socket Button (1/4-20 x 3/4")                                       | 1            | 2        |

NOTE: A - Includes items 3-12  
 B - Individual components are not available. The Headrest Mounting Hardware Kit was revised to include a Wire Guard Bracket and is used for Conventional and Contoura Backs. The Headrest Mounting Hardware Kit is also backward compatible in the field.  
 C - Includes items 15-19. Used for ABS Plastic Curved Backs and double spreader bar applications as well.  
 D - Clamp is no longer available individually. See Headrest Clamp Mounting Hardware Kit item 14 or 20 depending on Back Style.  
 E - Includes items 21-25. Used on Metal Curved Backs. Hardware can also be used with an Invacare PCS Back.  
 F - Item 17 Adjustment Knob was replaced with an Adjustment Lever. The Lever is not available as a separate part. The knob Part # 1072439 is interchangeable with the Lever.  
 G - Hardware can also be used with an Invacare Personal Back.