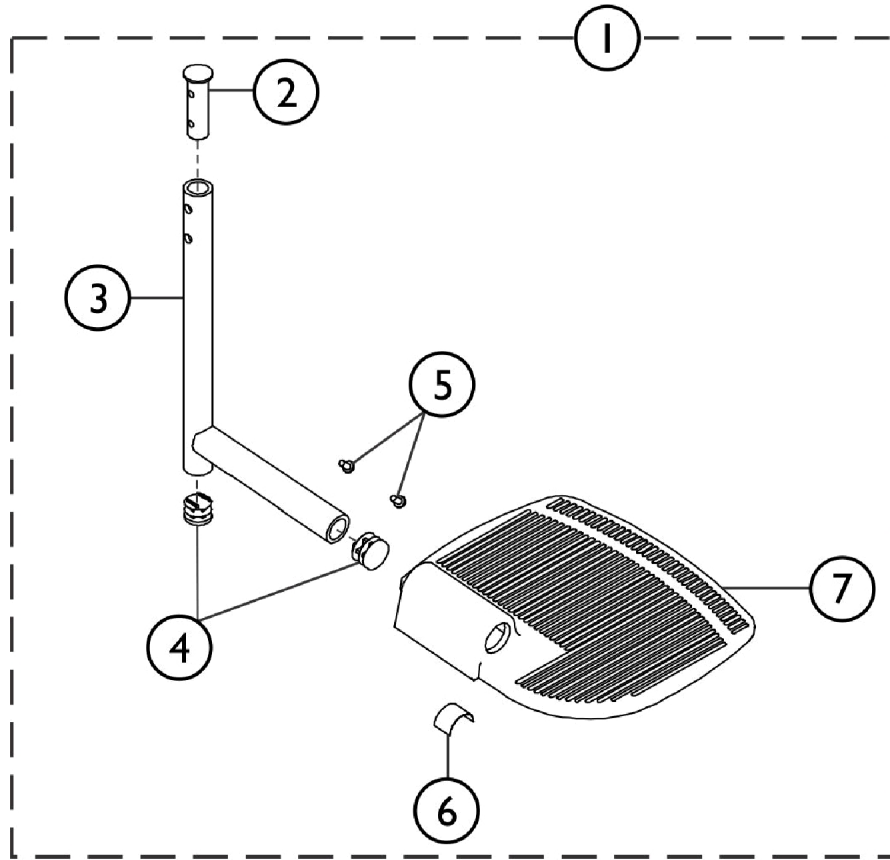


# Pivot Slide Tube with Footplate - TZ33A & TZ34A



SSM\_042A

## Pivot Slide Tube with Footplate - TZ33A & TZ34A

Item Number	Note	Part Number	Description	Quantity Per	
				Package	Assembly
1	A	1101440	Pivot/Slide Tube w/ Extra Large Footplate Assembly, Chrome - Right	1	1
1	A	1101441	Pivot/Slide Tube w/ Extra Large Footplate Assembly, Chrome - Left	1	1
1	A	1100824	Pivot/Slide Tube w/ Footplate Assembly, Black - Right	1	1
1	A	1100825	Pivot/Slide Tube w/ Footplate Assembly, Black - Left	1	1
2		1098801	Insert, Support, Legrest	1	1
3		1100823	Tube, Pivot/Slide, Black	1	1
3		1101478	Tube, Pivot/Slide, Chrome	1	1
4		1027097	Plug Button, Black (3/4")	1	2
5		40120X001	Screw, Phillips Pan Head (#8-32 x 3/8")	1	2
6	B,C	1036123	Spring, Leaf	1	3
7		1103012	Footplate, Aluminum, Extra Large - Right	1	1
7		1103013	Footplate, Aluminum, Extra Large - Left	1	1

NOTE: A - Includes items 2-7.  
 B - Use one or more leaf springs per assembly as required such that footplate may be moved by hand to the up-right position and remain in place.  
 C - Use with Extra Large Footplates.