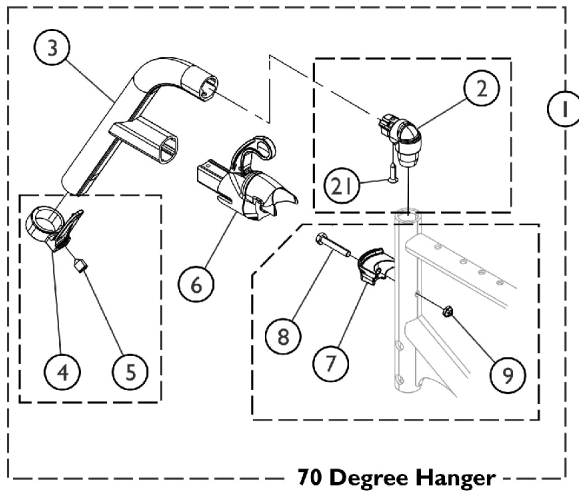
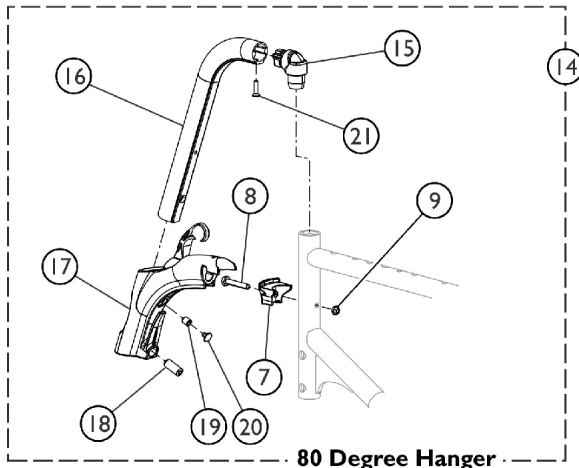


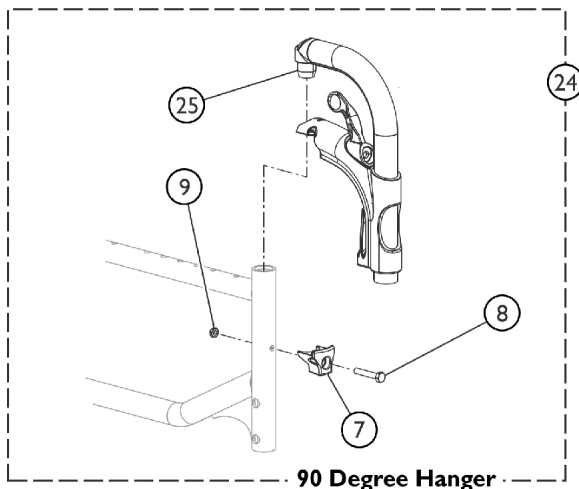
Front Riggings - Myon/Myon Active Footrest Support, Calf Pad, and Amputee Legrest



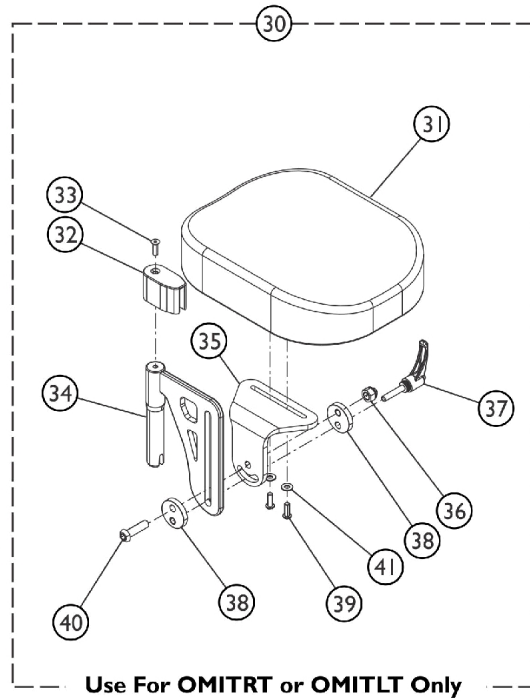
70 Degree Hanger



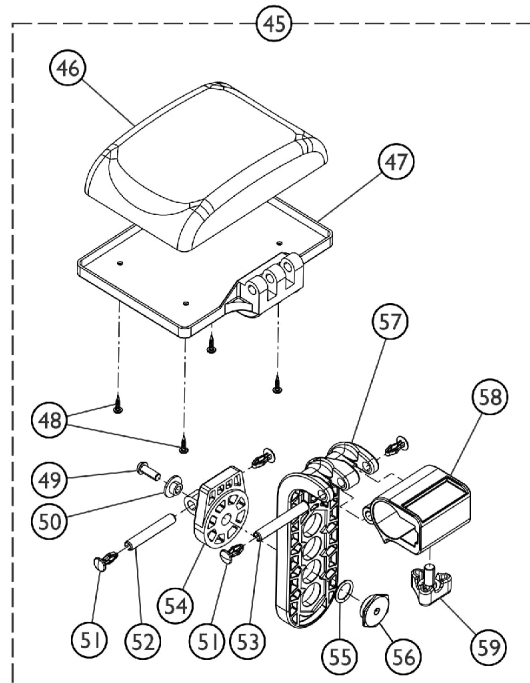
80 Degree Hanger



90 Degree Hanger



Use For OMITRT or OMITLT Only



Front Riggings - Myon/Myon Active Footrest Support, Calf Pad, and Amputee Legrest

Item Number	Note	Part Number	Description	Quantity Per	
				Package	Assembly
1	A	8881173077	Hanger, Front Rigging, 70 Degree, Color	1	1
2			Support, Hanger, Footrest	1	1
3			Tube, Rigging, 70 Degree, Color	1	1
4			Calf Support Strap	1	1
5			Screw, Socket Head Cone PT Set (M10 x 1.5 x 16)	1	1
6			Housing, Locking Pin	1	1
7			Bracket, Front Rigging	1	1
8			Screw, Socket Head, Cap (M6 x 35mm)	1	1
9			NLA - Locknut (M6 x 1)	1	1
21			Screw, Countersunk (M4.8)	1	1
	G	1190014	Kit, Strap Support w/ Hardware	1	1
4			Calf Support Strap	1	1
5			Screw, Stop (M10 x 1.5 x 12mm)	1	1
	H	1190015	Kit, Hanger Support w/ Hardware	1	1
2			Support, Hanger, Footrest	1	1
21			Screw, Countersunk (M4.8)	1	1
	I	1190016	Kit, Rigging Bracket w/ Hardware	1	1
7			Bracket, Front Rigging	1	1
8			Screw, Socket Head, Cap (M6 x 35mm)	1	1
9			NLA - Locknut (M6 x 1)	1	1
14			Hanger, Front Rigging, 80 Degree, Color	1	2
7	B	8881169050	Bracket, Front Rigging	1	1
8			Screw, Socket Head, Cap (M6 x 35mm)	1	1
9			NLA - Locknut (M6 x 1)	1	1
15			Support, Hanger, Footrest	1	1
16			Tube, Upper, Front Rigging, Color	1	1
17			Housing, Legrest, 80 Degree	1	1
18			Screw, Stop (M10 x 1.5 x 23mm)	1	1
19			Screw, Stop (M10 x 1.5 x 12mm)	1	1
20			Key, Cap	1	1
21			Screw, Countersunk (M4.8)	1	1
16	C	1169049	Tube, Upper, Front Rigging, Color	1	1
24		1493056-0509	Hanger, Front Rigging, 90 Degree, Color	1	2
7			Bracket, Front Rigging	1	1
8			Screw, Socket Head, Cap (M6 x 35mm)	1	1
9			NLA - Locknut (M6 x 1)	1	1
30	D,F	1169054	Amputee Legrest Assembly w/ Hardware - Right	1	1
31			Pad, Amputee, Legrest	1	1
32			Screw, Flat Head, Socket (M5 x .8 x 16mm)	1	1
33			Stopper, Amputee	1	1
34			Support, Legrest, Amputee	1	2
35			Screw, Button Head (M8 x 30mm)	1	1
36			Spacer, Locking, Amputee	1	2
37			Screw, Button Head (M5 x 16mm)	1	2
38			Runner, Amputee	1	1

Front Riggings - Myon/Myon Active Footrest Support, Calf Pad, and Amputee Legrest

Item Number	Note	Part Number	Description	Quantity Per	
				Package	Assembly
39	D	1169055	Washer, Flat (12 x 5 x 1)	1	2
40			Nut (M8)	1	1
41			Lever, Indexable (M6 x 1 x 25mm)	1	1
30			Amputee Legrest Assembly w/ Hardware - Left	1	1
31			Pad, Amputee, Legrest	1	1
32			Screw, Flat Head, Socket (M5 x .8 x 16mm)	1	1
33			Stopper, Amputee	1	1
34			Support, Legrest, Amputee	1	1
35			Screw, Button Head (M8 x 30mm)	1	1
36			Spacer, Locking, Amputee	1	2
37			Screw, Button Head (M5 x 16mm)	1	2
38			Runner, Amputee	1	1
39			Washer, Flat (12 x 5 x 1)	1	2
40			Nut (M8)	1	1
41			Lever, Indexable (M6 x 1 x 25mm)	1	1
45		1169052	Calf Pad Assembly w/ Hardware (15 - 17" W)	1	1
46			Pad, Calf (15 - 17" W)	1	1
47			Plate, Attaching, Calf Pad (15 - 17" W)	1	1
48			Screw, VBA (M3.5 x 15)	1	4
49			Screw, Socket, Button Head (M6 x 16mm)	1	1
50			Spacer, Sleeve	1	1
51			Clamp, Calf Pad Plate	1	1
52			Pin, Spring (M8 x 50mm)	1	1
53			Pin, Spring (M8 x 55mm)	1	1
54			Plate, Adjustment Angle	1	1
55			Washer (2.4mm x 15.6mm)	1	1
56			Ring, Locking	1	1
57			Plate, Articulation, Female	1	1
58			Plate, Articulation	1	1
59			Knob, Locking, Star	1	1
45	E	1169053	Calf Pad Assembly w/ Hardware (18 - 20" W)	1	1
46			Pad, Calf (18 - 20" W)	1	1
47			Plate, Attaching, Calf Pad (18 - 20" W)	1	1
48			Plate, Articulation, Female	1	1
49			Washer (2.4mm x 15.6mm)	1	1
50			Spacer, Sleeve	1	1
51			Clamp, Calf Pad Plate	1	4
52			Ring, Locking	1	1
53			Screw, VBA (M3.5 x 15)	1	4
54			Screw, Socket, Button Head (M6 x 16mm)	1	1
55			Pin, Spring (M8 x 55mm)	1	1
56			Pin, Spring (M8 x 50mm)	1	1
57			Plate, Adjustment Angle	1	1
58			Plate, Articulation	1	1
59			Knob, Locking, Star	1	1

Front Riggings - Myon/Myon Active Footrest Support, Calf Pad, and Amputee Legrest

NOTE: A - Includes items 2 - 9, and item 21.
B - Includes items 7, 8, 9, and items 15 - 21.
C - Includes items 7, 8, and 9.
D - Includes items 31 - 41. Only used when an Amputee (AMPLEGLT, AMPLEGRT) is ordered.
E - Includes items 46 - 59.
F - Quantity is one if OMITRT or OMITLT is required for chair.
G - Kit includes items 4 and 5.
H - Kit includes items 2 and 21.
I - Kit includes items 7, 8, and 9.