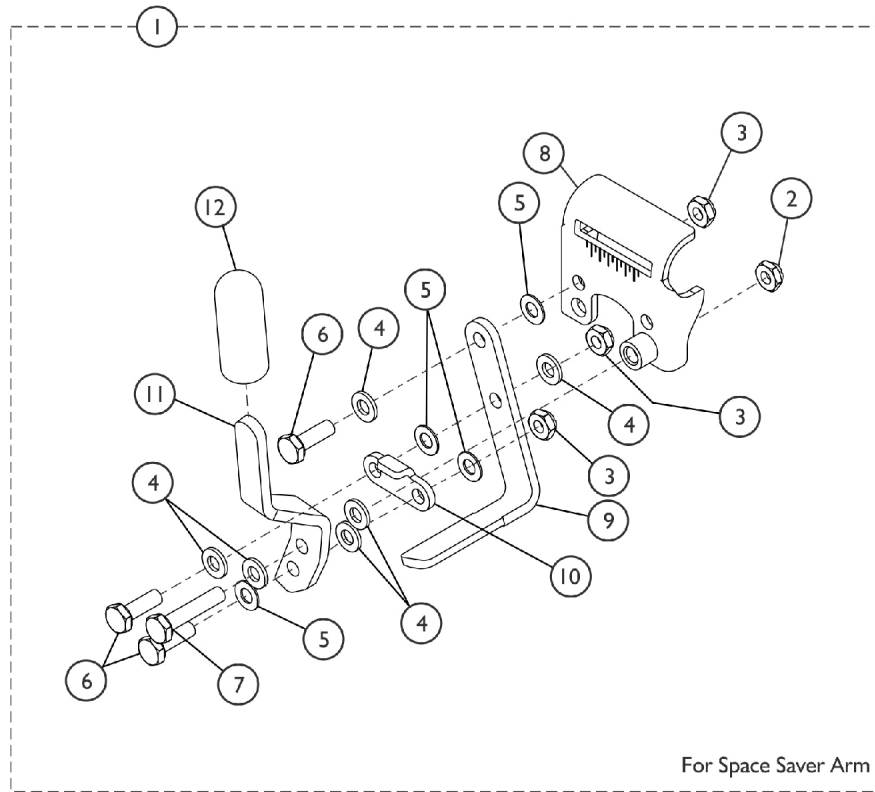


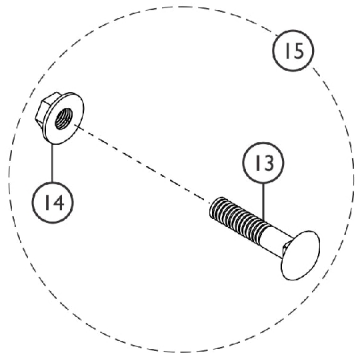
# Link-Pivot Style Wheel Locks

## Space Saver Arm, Builder Chairs (After 4/15/07)



SSM-041A

### Attaching Hardware



## Link-Pivot Style Wheel Locks

### Space Saver Arm, Builder Chairs (After 4/15/07)

Item Number	Note	Part Number	Description	Quantity Per	
				Package	Assembly
1	A	1111924	Wheel Lock Assembly, Push to Lock, Black - Right	1	1
1	A	1111925	Wheel Lock Assembly, Push to Lock, Black - Left	1	1
1	A	1111926	Wheel Lock Assembly, Pull to Lock, Black - Right	1	1
1	A	1111927	Wheel Lock Assembly, Pull to Lock, Black - Left	1	1
2		1025195	Locknut (1/4-20)	1	1
3		1025765	Locknut (1/4-28)	1	3
4		1026033	Washer, Nylon (1/4 x 1/2 x 1/16")	1	6
5		1026103	Washer, Nylon (1/4 x 1/2 x 1/32")	1	4
6		1028687	Screw, Hex Head (1/4-28 x 3/4")	1	3
7		1021406	Screw, Hex Head (1/4-20 x 1-1/4")	1	1
9		1102133	Shoe, Wheel Lock	1	1
10		1102132	NLA - Link, Black	1	1
11		1102133	Shoe, Wheel Lock	1	1
12		47376X024	Tip, Rubber Wheel Lock Handle, Black	1	1
13		1021402	Bolt, Carriage (1/4-20 x 1-1/4")	1	1
14		1021403	Nut, Hex Flang (1/4-20)	1	1
15	B	1017677	Kit, Hardware, Wheel Lock (Pair)	1	1
			Bolt, Carriage (1/4-20 x 1-1/4")	1	2
			Nut, Hex Flang (1/4-20)	1	2
	D	00078X021	Instruction Sheet, Wheel Lock	1	1
	C,D	1058899	Wheel Lock Extension Handle Assembly, Black (6")	2	1

NOTE: A - Includes Items 2 - 12.  
B - Includes Items 13 and 14.  
C - Includes: Extension Handle and Rubber Tip  
D - Not shown.