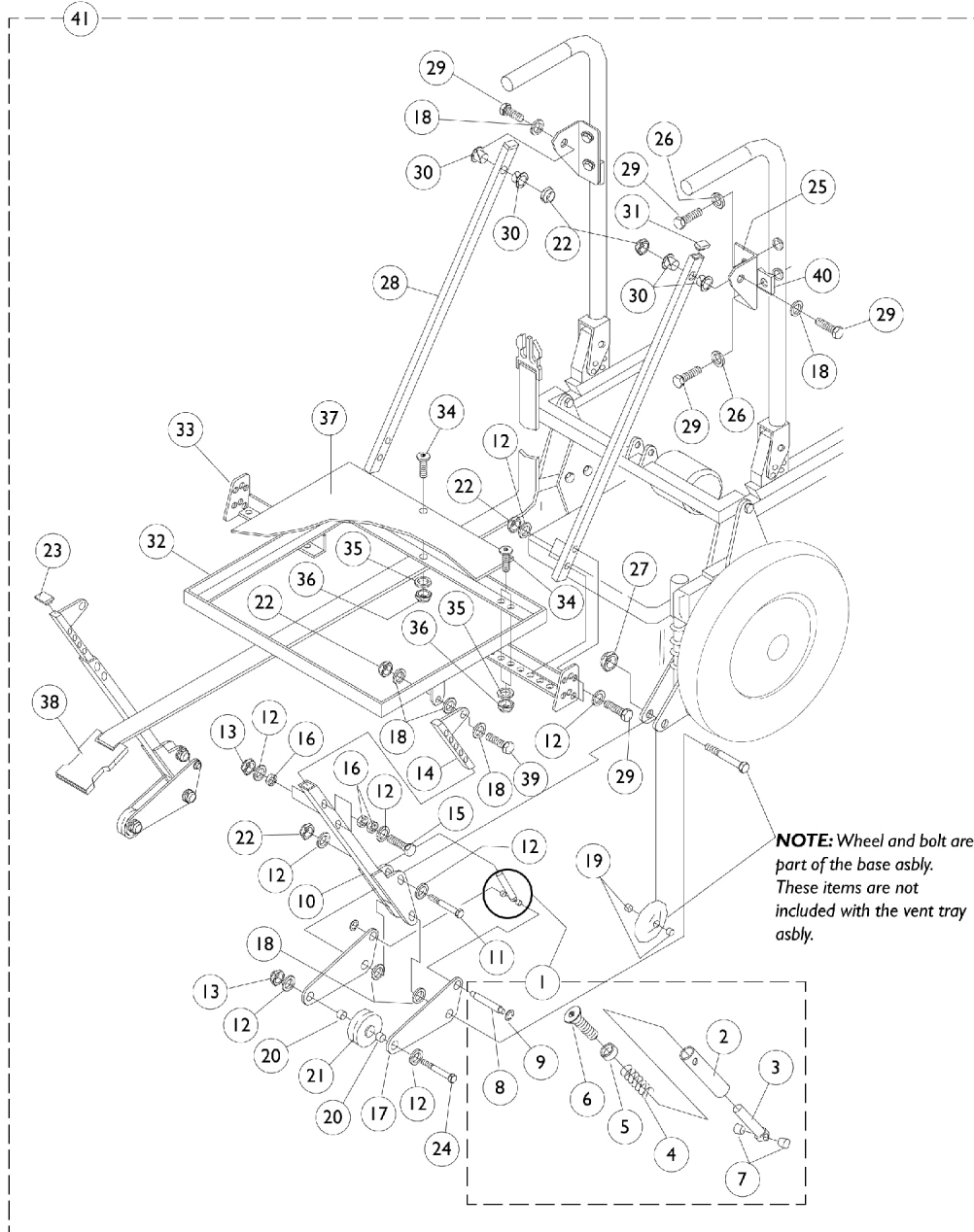


Vent Tray Assembly (After 4/30/96)

Basic Tilt and Tilt Only



Vent Tray Assembly (After 4/30/96) Basic Tilt and Tilt Only

Item Number	Note	Part Number	Description	Quantity Per	
				Package	Assembly
1	A	1072928-NLA	NLA - Mechanism, Anti-Tip Spring	1	2
2		0057202-NLA	NLA - Housing, Spring	1	2
3		0057305-NLA	NLA - Plunger, Spring	1	2
4		0159200-NLA	NLA - Spring, Compression	1	2
5		0057405-NLA	NLA - Retainer, Spring Plunger	1	2
6		1077248-NLA	NLA - Screw, Socket Head (1/4-20 x 1")	1	2
7		0184522-NLA	NLA - Spacer, Spring Plunger	1	4
8		0184422-NLA	NLA - Shaft, Spring Plunger Retaining	1	2
9		0226300-NLA	NLA - Ring, Retaining (1/4")	25	4
10		0300102-NLA	NLA - Leg Weldment, Lower	1	2
11		1037610	Screw, Hex Head (1/4-20 x 1-5/8")	1	2
12		0050406	Washer, Flat (1/4 x 5/8 x 1/16")	1	24
13		7930333	Locknut (1/4-20)	25	10
14		0300202-NLA	NLA - Tube, Adjustment, Lower Leg, Black	1	2
15		0051006-NLA	NLA - Screw, Hex Head Full Thread (1/4-20 x 1-1/2")	1	4
16		0050506-NLA	NLA - Lockwasher, High Collar, Split (1/4")	1	12
17		0181502-NLA	NLA - Plate, Anti-Tip Wheel	1	4
18		0050100-NLA	NLA - Washer, Nylon Flat (1/4 x 1/2 x 1/16")	1	12
19		0185500-NLA	NLA - Spacer, Anti-Tip	1	4
20		0186000-NLA	NLA - Spacer, Wheel	1	4
21		1055684-NLA	NLA - Wheel, Anti-Tip 2"	1	2
22		7930323-NLA	NLA - Package, Locknut (1/4-20)	25	10
23		0062200-NLA	NLA - Plug Button, Square (3/4")	1	2
24		0052306-NLA	NLA - Screw, Hex Head (1/4-20 x 2-1/4")	1	2
25		0301302	Plate, Angle Mounting (Tilt) Right	1	1
25		0301202	Plate, Angle Mounting (Tilt) Left	1	1
26		1007453	Lockwasher, Split (1/4")	1	1
27		0055006-NLA	NLA - Locknut, Low Profile (5/16-18)	1	4
28		0301102-NLA	NLA - Tube, Tilt Hanger	1	2
29		0051706-NLA	NLA - Screw, Hex Head (1/4-20 x 1")	1	2
30		0059800-NLA	NLA - Bearing, Nylon	1	10
31		0302800-NLA	NLA - Plug Button, Rectangular (1 x 1/2")	1	4
32		0299202-NLA	NLA - Tray, Vent	1	2
33		0300902-NLA	NLA - Wing, Adjustment - Right	1	1
33		0300802-NLA	NLA - Wing, Adjustment - Left	1	1
34		1077249-NLA	NLA - Screw, Socket Head (#10-32 x 3/4")	1	6
35		0224806-NLA	NLA - Washer (#10)	1	6
36		1025735	Locknut (#10-32)	1	6
37		0301619-NLA	NLA - Plate, ABS Bottom	1	1
38		0004900-NLA	NLA - Strap, Battery (65" Long)	1	1
39		0053006-NLA	NLA - Screw, Hex Head (1/4-20 x 3/4")	1	2
40		0049824-NLA	NLA - Spacer, Coved (1/4 x 3/4 x 7/16")	1	2
41	B	0307600-NLA	NLA - Vent Tray Assembly (Includesox Hanger Assembly)	1	1

Vent Tray Assembly (After 4/30/96)

Basic Tilt and Tilt Only

NOTE: A - Includes items 2-9
B - Includes Battery Box Hanger Assembly

When ordering a vent tray assembly for storm bases manufactured after 6/30/98 you must order the anti-tip extension assemblies located on Anti-Tip Wheel Extension Assembly page.