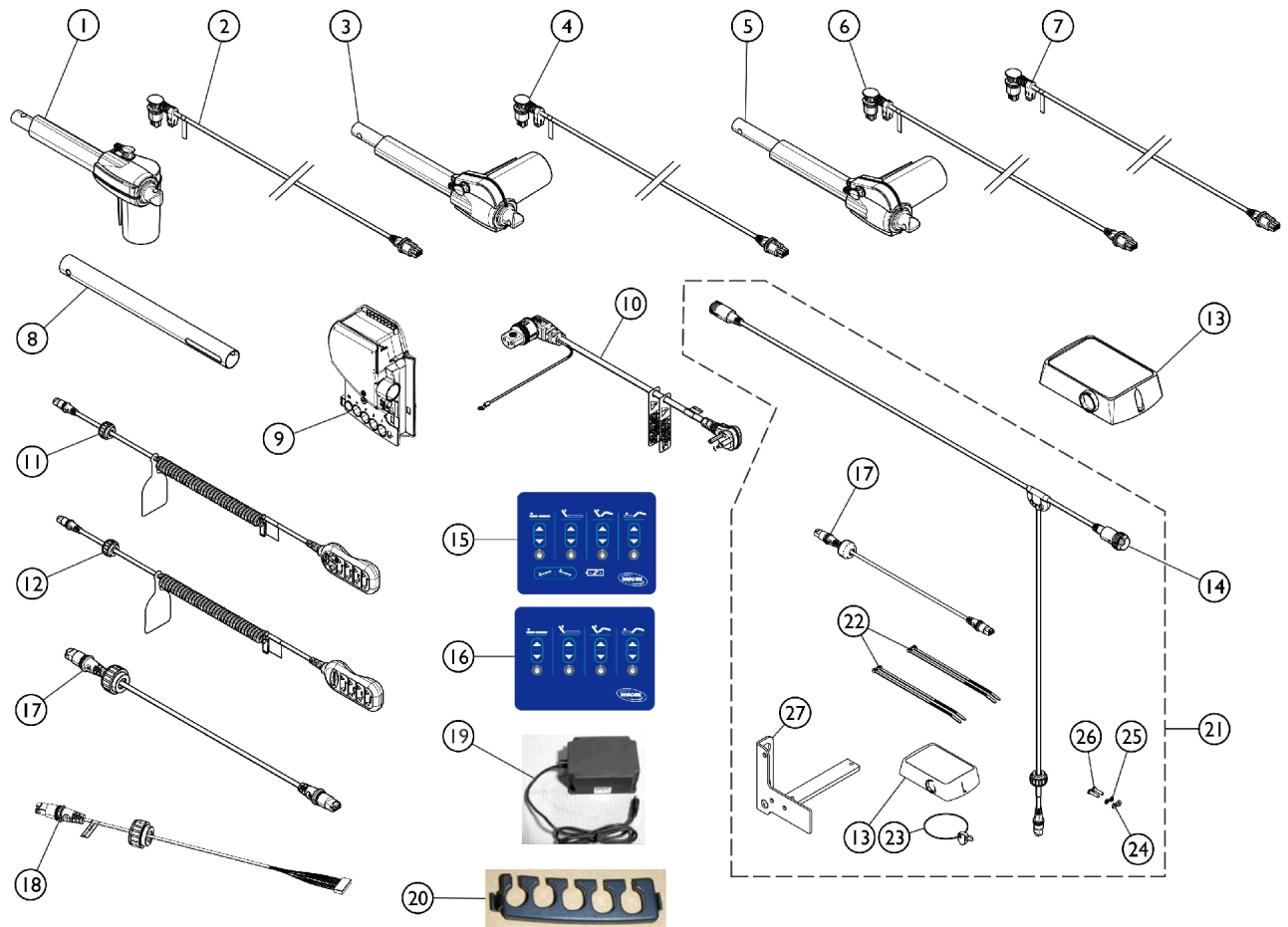


Electronics (After 8/17/2010)



Electronics (After 8/17/2010)

Item Number	Note	Part Number	Description	Quantity Per	
				Package	Assembly
1		1159613	Actuator, Head (LA27-U041-01)	1	1
2		1158425	Cable, Motor, Head (Yellow)	1	1
3		1147532	Actuator, Foot (LA27-U042-01)	1	1
4		1158424	Cable, Motor, Foot (Blue)	1	1
5		1158427	Actuator, HiLo (LA27-U086-00)	1	2
6		1158431	Cable, HiLo Motor w/ Red O-Ring (Head End)	1	1
7		1158430	Cable, Motor, HiLo, Foot End (Black)	1	1
8		1149695	Extension Tube, Motor - Foot	1	1
9		1158557	Control Box (CB06-U016-00)	1	1
10		1165079	Power Cord	1	1
11		1158553	Pendant, 8 Channels, Standard (1158435 - Green O-Ring)	1	1
12		1158554-NLA	NLA - Pendant, 10 Function, Safety Package (1158434 - Green O-Ring)	1	1
13		1158450	Lockout Box	1	1
14	A	1158433	Cable, T, w/o Footboard Staff Control (Standard)	1	1
15		1158440	Panel, Control Bed w/ Trend	1	1
16		1158441	Panel, Control Bed w/o Trend	1	1
17		1158417	Jumper Cable for Lockout Box	1	1
18		1158416	Cable, Inboard Membrane	1	1
19		1175549-NLA	NLA - Battery, On Board Backup w/ Hardware	1	1
19		1152564	Battery, On Board Backup w/ Hardware	1	1
20		1116655	Lock, Cable	1	1
21	B	1158571	Kit, Lockout Box (w/o Option)	1	1
13			Lockout Box	1	1
14			Cable, T, w/o Footboard Staff Control (Standard)	1	1
17			Jumper Cable for Lockout Box	1	1
22			NLA - Wrap, Tie (8")	1	4
23			Latch, Bed End, 1/4 Turn w/ Ring	1	1
24			Nut, Hex (8-32)	1	2
25			Washer, Lock (#10)	1	2
26			Screw, Pan Head, Phillips (8-32 x 3/4 PHMS-8-32-34)	1	2
27			NLA - Bracket, Bed End, Lockout Box	1	1

NOTE: A - Requires (2) T-Cables for Lock-Out Box and Membrane.

B - Kit includes items 13, 14, 17, and 22 - 27.