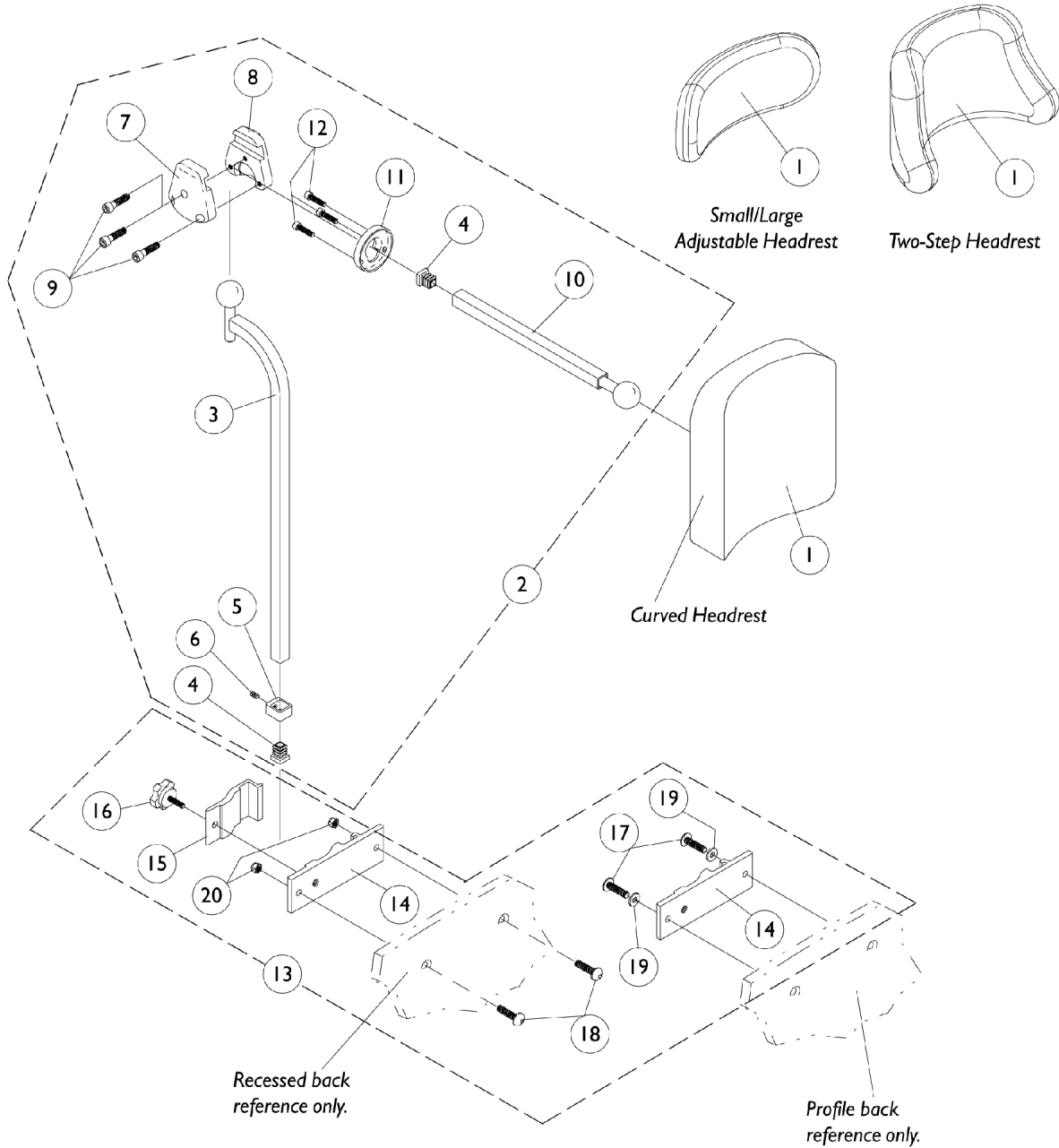


Headrest Assembly

Profile and Recessed Back

Basic Tilt and Tilt Only or Tilt/Recline and Recline Only

NOTE: Recessed back is not offered on Basic Tilt and Tilt Only Systems.
NOTE: Headrest clamp hardware comes packaged to accommodate profile and recessed backs.



Headrest Assembly

Profile and Recessed Back

Basic Tilt and Tilt Only or Tilt/Recline and Recline Only

Item Number	Note	Part Number	Description	Quantity Per	
				Package	Assembly
1		0127700	Headrest, Curved (6" W x 7" H)	1	1
1		0128000-NLA	NLA - Headrest, Two-Step (8-1/2" W x 5-1/2" H)	1	1
1		0022600	Kit, Headrest w/ Screws, Adjustable, Small, Otto Bock (9" W x 3-1/2" H)	1	1
1		0022400	Kit, Headrest w/ Screws, Adjustable, Large, Otto Bock (12" W x 6" H)	1	1
2		0197024	Fixture Assembly, Offset Support	1	1
3		0271524-NLA	NLA - Tube, Offset Fixture, Black	1	1
4		1077076-NLA	NLA - Plug Button, Square (1/2")	1	2
5		0271124-NLA	NLA - Collar, Offset Fixture Tube	1	1
6		0288606-NLA	NLA - Screw, Set Socket Cup Point (#10-24 x 3/16")	1	1
7		0271224	Half Clamp, Non-Threaded Holes	1	1
8		0271324	Half Clamp, Threaded Holes	1	1
9		1027268	Screw, Allen Head (1/4-20 x 1")	1	3
10		0271424-NLA	NLA - Tube, Fixture Adjustment	1	1
11		0283724-NLA	NLA - Ring, Fixture Clamp	1	1
12		0067006-NLA	NLA - Screw, Cap, Socket Head (#10-32 x 1/2")	1	3
13	A	0273000-NLA	NLA - Headrest Clamp Assembly	1	1
14	A	0235222-NLA	NLA - Clamp, Large Bottom Half	1	1
15	A	0235322-NLA	NLA - Clamp, Large Top Half	1	1
16		1072440	Knob, Adjustment, Black (1/2" L Threads)	1	1
17		0258006-NLA	NLA - Screw, Socket Head, Cap, Button (1/4-20 x 5/8")	1	2
18		0051606-NLA	NLA - Screw, Cap, Button Head, Socket (1/4-20 x 1")	1	2
19		1007453	Lockwasher, Split (1/4")	1	2
20		7930323-NLA	NLA - Package, Locknut (1/4-20)	25	2

NOTE: A - Recessed and Profile Backs