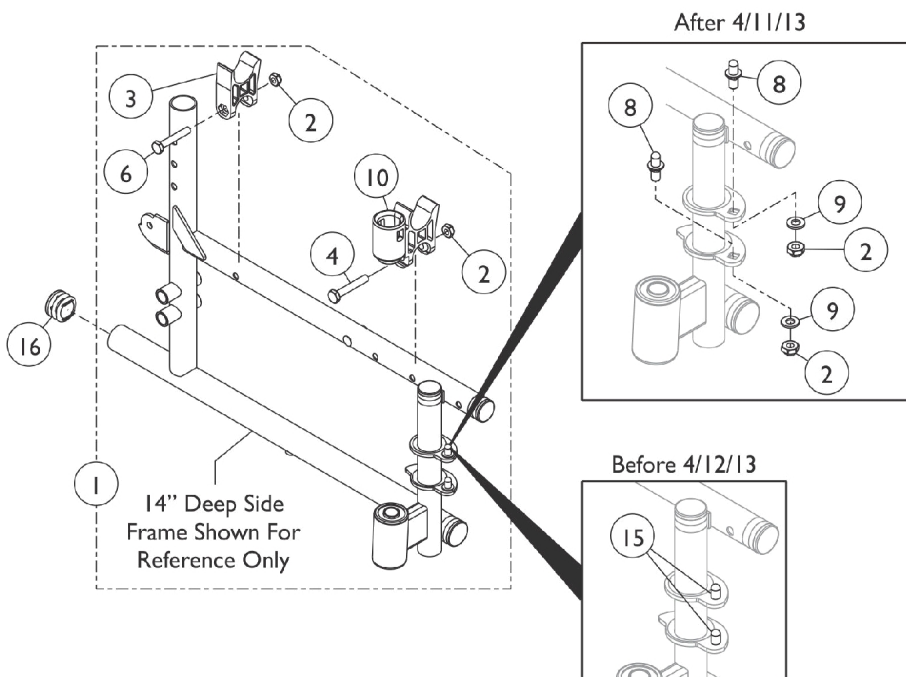
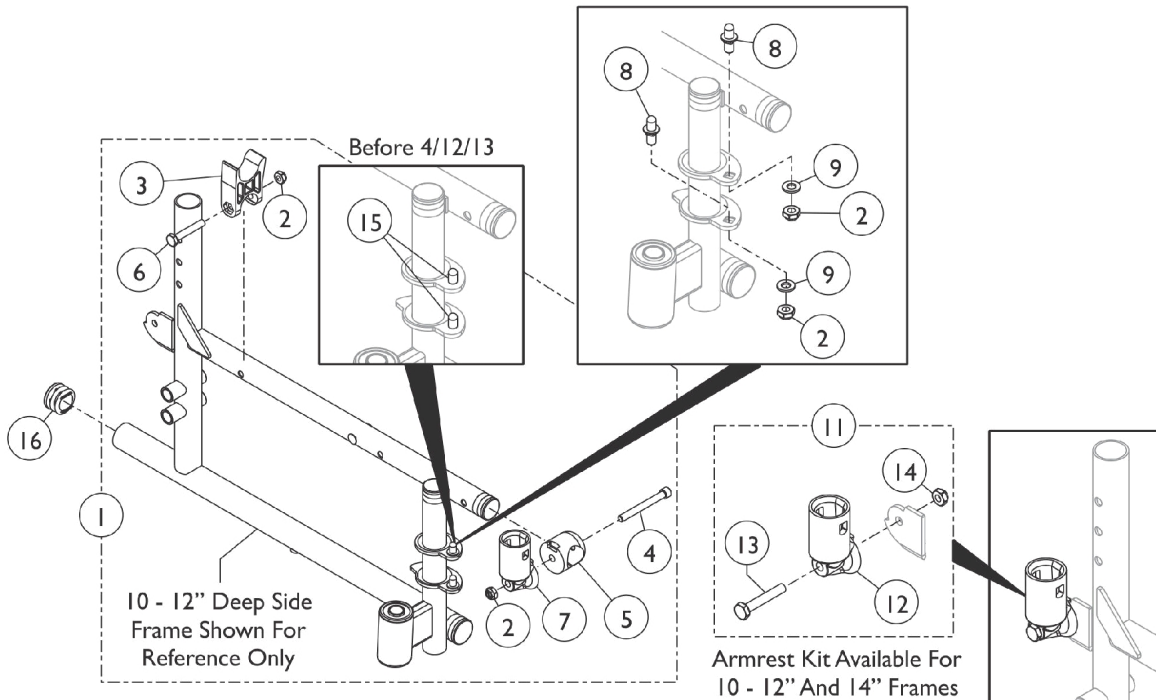


Frame Hardware

After 4/11/13



Frame Hardware

Item Number	Note	Part Number	Description	Quantity Per	
				Package	Assembly
1	A	1100969	Kit, Side Frame Hardware (10 - 12" D), (Pair)	1	1
2			Locknut (1/4-20)	1	8
3			H-Block	1	2
4			Screw, Socket Head (1/4-20 x 2-1/4")	1	2
5			Spacer, Arm Socket	1	1
6			Screw, Hex Head (1/4-20 x 1-1/2")	1	2
7			Cup, Socket Pivot	1	2
8			Pin, Hinge	1	4
9			Washer, Plain (1/4 x 1/2 x 9/16")	1	2
1	B	1056983-NLA	NLA - Kit, Side Frame Hardware (14" D), (Pair)	1	1
2			Locknut (1/4-20)	1	8
3			H-Block	1	2
6			Screw, Hex Head (1/4-20 x 1-1/2")	1	4
8			Pin, Hinge	1	4
9			Washer, Plain (1/4 x 1/2 x 9/16")	1	4
10			NLA - H-Block with Socket Cup	1	2
2		60275X000	Locknut (1/4-20)	1	2
3		1107805	H-Block	1	1
4		60285X006	Screw, Socket Head (1/4-20 x 2-1/4")	1	2
5		1098397	Spacer, Arm Socket	1	1
6		16720X004	Screw, Hex Head (1/4-20 x 1-1/2")	1	2
7		1056406	Cup, Socket Pivot	1	2
10		1056405-NLA	NLA - H-Block with Socket Cup	1	1
11	C	1058139	Kit, Armrest Hardware	1	1
12			Cup, Socket Pivot	1	1
13			NLA - Screw, Hex Head (1/4-20 x 1-3/8")	1	1
14			Locknut (1/4-20)	1	1
15	E,E1	1096781	Kit, Hinge Pin Replacement Hardware (Pair)	1	1
15			NLA - Wrench, Allen (3/32")	1	1
15			Cap, Threaded	1	4
15			Washer, Locking Split (#10)	1	4
15			Screw, Socket Button Head Cap, Regulator (8-32 x 3/8")	1	4
16	D	1029501	Plug Button, Black (1")	1	2

NOTE: A - Includes items 2-9.
 B - Includes items 2, 3, 6, 8-10.
 C - Includes items 12-14
 D - Chairs without anti-tippers require plug buttons.
 E - Hinge Pin Replacement Hardware Kit is only used on Side Frames w/ welded-on Hinge Pins manufactured before 4/12/13. Side Frames after 4/11/13 have Hinge Pin Saddle Plates w/ square holes to attach REMOVABLE Non-Welded Hinge Pins.
 E1 - All Side Frames ordered after 4/11/13 require new Side Frame Hardware that will include the removable Hinge Pins also. Removable Hinge Pins are not sold separately.