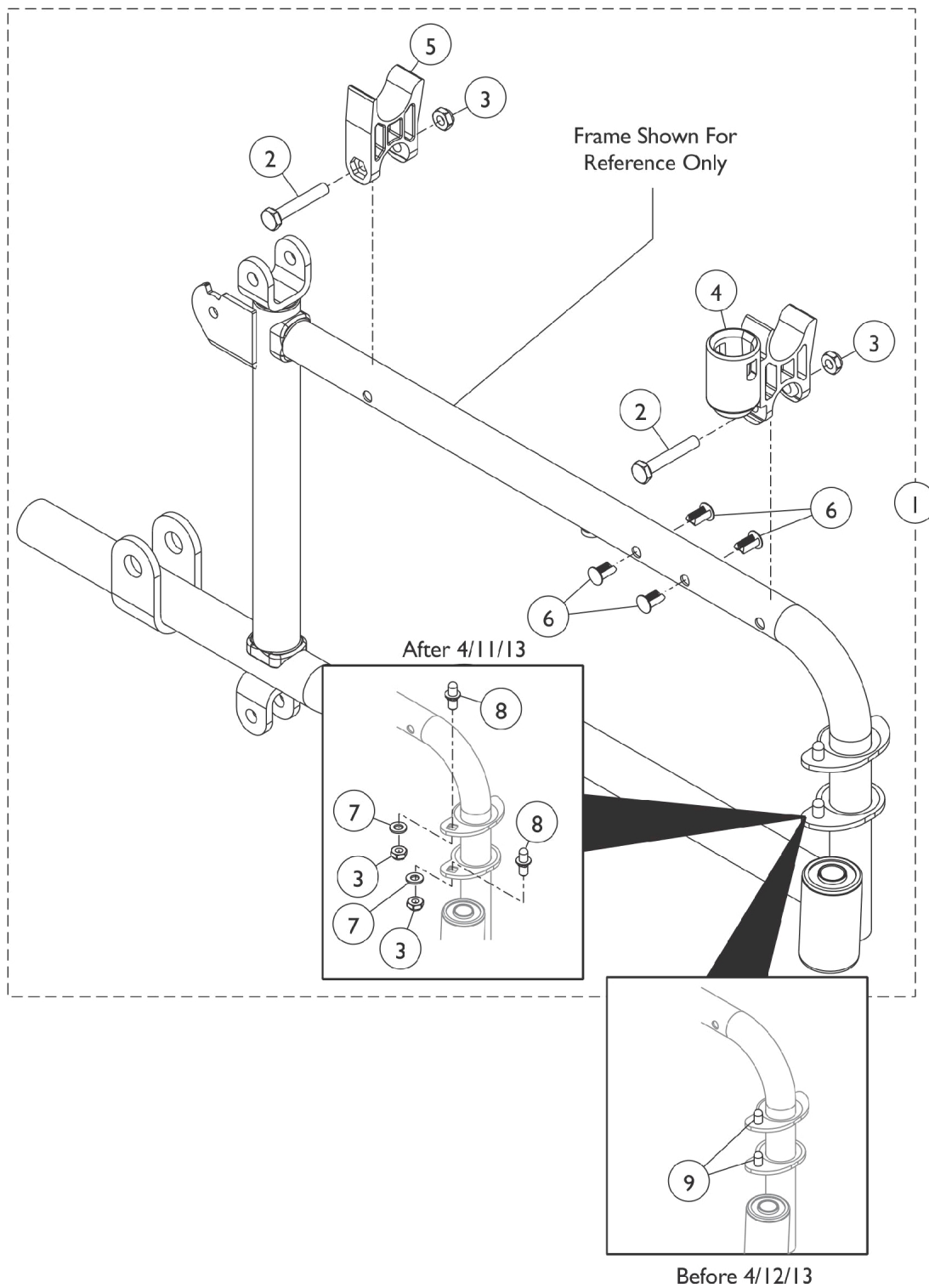


Frame Hardware - 9000XT Recliner



Frame Hardware - 9000XT Recliner

Item Number	Note	Part Number	Description	Quantity Per	
				Package	Assembly
1	A	1074659	Kit, Side Frame Hardware, (Pair)	1	1
2			Screw, Hex Head (1/4-20 x 1-1/2")	1	4
3			Locknut (1/4-20)	1	8
4			H-Block with Socket Cup	1	2
5			H-Block	1	2
6			NLA - Rivet, Ratchet	1	8
7			Washer, Plain (1/4 x 1/2 x 9/16")	1	4
8			Pin, Hinge	1	4
2	C,C1	16720X004	Screw, Hex Head (1/4-20 x 1-1/2")	1	4
3		60275X000	Locknut (1/4-20)	1	4
4		1109938	H-Block with Socket Cup	1	2
5		1107805	H-Block	1	2
6		1023450-NLA	NLA - Rivet, Ratchet	1	4
9		1096781	Kit, Hinge Pin Replacement Hardware (Pair)	4	1
			NLA - Wrench, Allen (3/32")	1	1
			Cap, Threaded	1	4
			Washer, Locking Split (#10)	1	4
			Screw, Socket Button Head Cap, Regulator (8-32 x 3/8")	1	4
		1058139	Kit, Armrest Hardware	1	1
			Cup, Socket Pivot	1	1
			NLA - Screw, Hex Head (1/4-20 x 1-3/8")	1	1
			Locknut (1/4-20)	1	1

NOTE: A - Includes items 2 - 8.
 B - Not Shown.
 C - Hinge Pin Replacement Hardware Kit is only used on Side Frames w/ welded-on Hinge Pins manufactured before 4/12/13. Side Frames after 4/11/13 have Hinge Pin Saddle Plates w/ square holes to attach REMOVABLE Non-Welded Hinge Pins.
 C1 - Side Frames ordered after 4/11/13 require new Side Frame Hardware that will include the removable Hinge Pins also. Removable Hinge Pins are not sold separately.