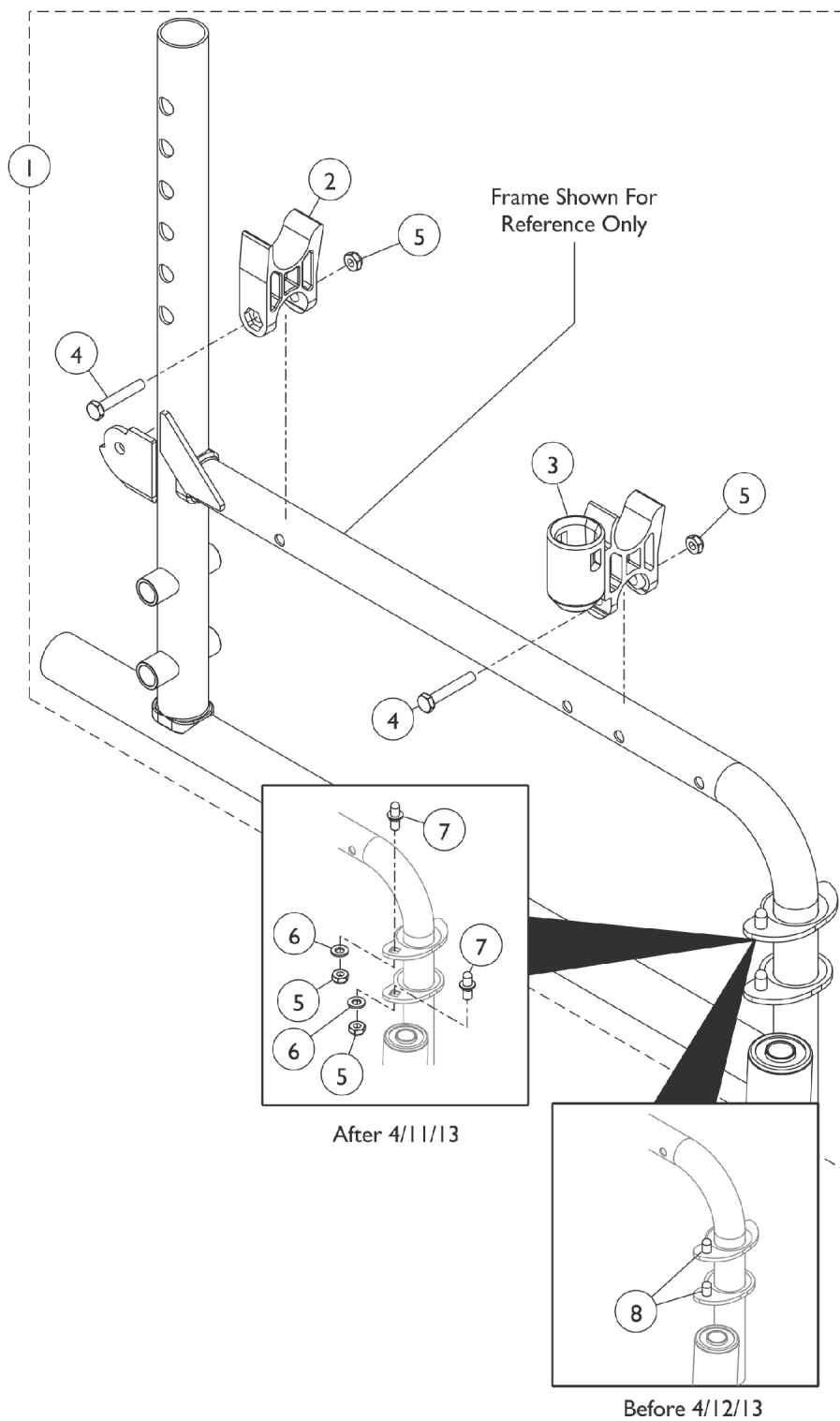


# Frame Hardware - 9000XT & 9000XDT



## Frame Hardware - 9000XT & 9000XDT

Item Number	Note	Part Number	Description	Quantity Per	
				Package	Assembly
1	A	1121091	Kit, Side Frame Hardware (Pair)	1	1
2			H-Block	1	2
3			H-Block with Socket Cup	1	2
4			Screw, Hex Head (1/4-20 x 1-1/2")	1	4
5			Locknut (1/4-20)	1	4
6			Washer, Plain (1/4 x 1/2 x 9/16")	1	4
7			Pin, Hinge	1	4
2	C,C1	1107805	H-Block	1	2
3		1109938	H-Block with Socket Cup	1	2
4		16720X004	Screw, Hex Head (1/4-20 x 1-1/2")	1	4
5		60275X000	Locknut (1/4-20)	1	4
8		1096781	Kit, Hinge Pin Replacement Hardware (Pair)	1	1
			NLA - Wrench, Allen (3/32")	1	1
			Cap, Threaded	1	4
			Washer, Locking Split (#10)	1	4
			Screw, Socket Button Head Cap, Regulator (8-32 x 3/8")	1	4
		1058139	Kit, Armrest Hardware	1	1
			Cup, Socket Pivot	1	1
			NLA - Screw, Hex Head (1/4-20 x 1-3/8")	1	1
			Locknut (1/4-20)	1	1

NOTE: A - Includes items 2 - 7. Hardware is used for color Side Frames also.  
B - Not Shown.  
C - Hinge Pin Replacement Hardware Kit is only used on Side Frames w/ welded-on Hinge Pins manufactured before 4/12/13. Side Frames after 4/11/13 have Hinge Pin Saddle Plates w/ square holes to attach REMOVABLE Non-Welded Hinge Pins.  
C1 - Side Frames ordered after 4/11/13 require new Side Frame Hardware that will include the removable Hinge Pins also. Removable Hinge Pins are not sold separately.