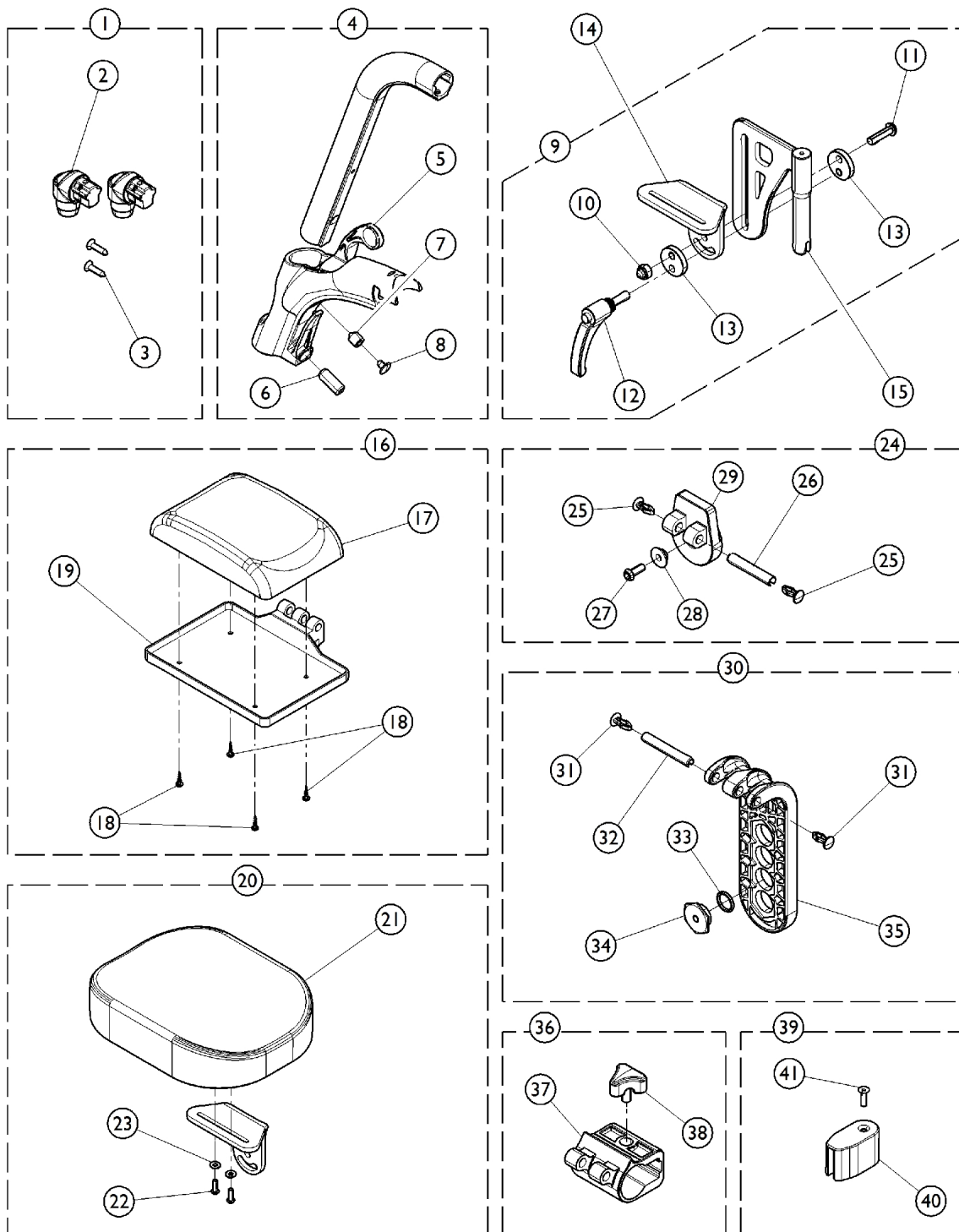


Legrest Component Kits



Legrest Component Kits

Item Number	Note	Part Number	Description	Quantity Per	
				Package	Assembly
1	A	1430426	Kit, Support Hanger Hardware	1	1
2			Support, Hanger, Footrest	1	2
3			Screw, Countersunk (M4.8)	1	2
4	B	1182277	Kit, Legrest Housing, 80 Degree	1	1
5			Housing, Legrest, 80 Degree	1	1
6			Screw, Stop (M10 x 1.5 x 23mm)	1	1
7			Screw, Stop (M10 x 1.5 x 12mm)	1	1
8	C	1446557	Key, Cap	1	1
9			Kit, Amputee Legrest Hardware	1	1
10			Nut (M8)	1	1
11			Screw, Button Head (M8 x 30mm)	1	1
12			Lever, Indexable (M6 x 1 x 25mm)	1	1
13	D	1442716-0002	Spacer, Locking, Amputee	1	2
14			Runner, Amputee	1	1
15			Support, Legrest, Amputee	1	1
16			Kit, Calf Pad w/ Plate and Hardware (15 - 17" W)	1	1
17	D	1182278	Calf Pad (15 - 17" W)	1	1
18			Screw, VBA (M3.5 x 15)	1	4
19			Plate, Attaching, Calf Pad (15 - 17" W)	1	1
16			Kit, Calf Pad w/ Plate and Hardware (18 - 20" W)	1	1
17	D	1182279	Pad, Calf (18 - 20" W)	1	1
18			Screw, VBA (M3.5 x 15)	1	4
19			Plate, Attaching, Calf Pad (18 - 20" W)	1	1
20			Kit, Amputee Legrest Pad w/ Hardware	1	1
21	E	1182283	Pad, Amputee Legrest	1	1
22			Screw, Button Head (M5 x 16mm)	1	2
23			Washer, Flat (12 x 5 x 1)	1	2
24			Kit, Adjustment Angle Plate w/ Hardware	1	1
25	F	1182280	Clamp, Calf Pad Plate	1	2
26			Pin, Spring (M8 x 50mm)	1	1
27			Screw, Socket, Button Head (M6 x 16mm)	1	1
28			Spacer, Sleeve	1	1
29	G	1182281	Plate, Adjustment Angle	1	1
30			Kit, Articulation Plate, Female w/ Hardware	1	1
31			Clamp, Calf Pad Plate	1	2
32			Pin, Spring (M8 x 55mm)	1	1
33	H	1182282	Plate, Articulation, Female	1	1
34			Washer (2.4mm x 15.6mm)	1	1
35			Ring, Locking	1	1
36			Kit, Articulation Plate w/ Knob	1	1
37	I	1446556	Plate, Articulation	1	1
38			Knob, Locking, Star	1	1
39			Kit, Amputee Stopper w/ Screw	1	1
40			Stopper, Amputee	1	1
41			Screw, Flat Head, Socket (M5 x .8 x 16mm)	1	1

Legrest Component Kits

NOTE: A - Includes items 2 and 3.
B - Includes items 5, 6, 7, and 8.
C - Includes items 9 - 13.
D - Includes items 17, 18, and 19.
E - Includes items 21, 22, and 23.
F - Includes items 25 - 29.
G - Includes items 31 - 35.
H - Includes items 37 and 38.
I - Includes items 40 and 41.