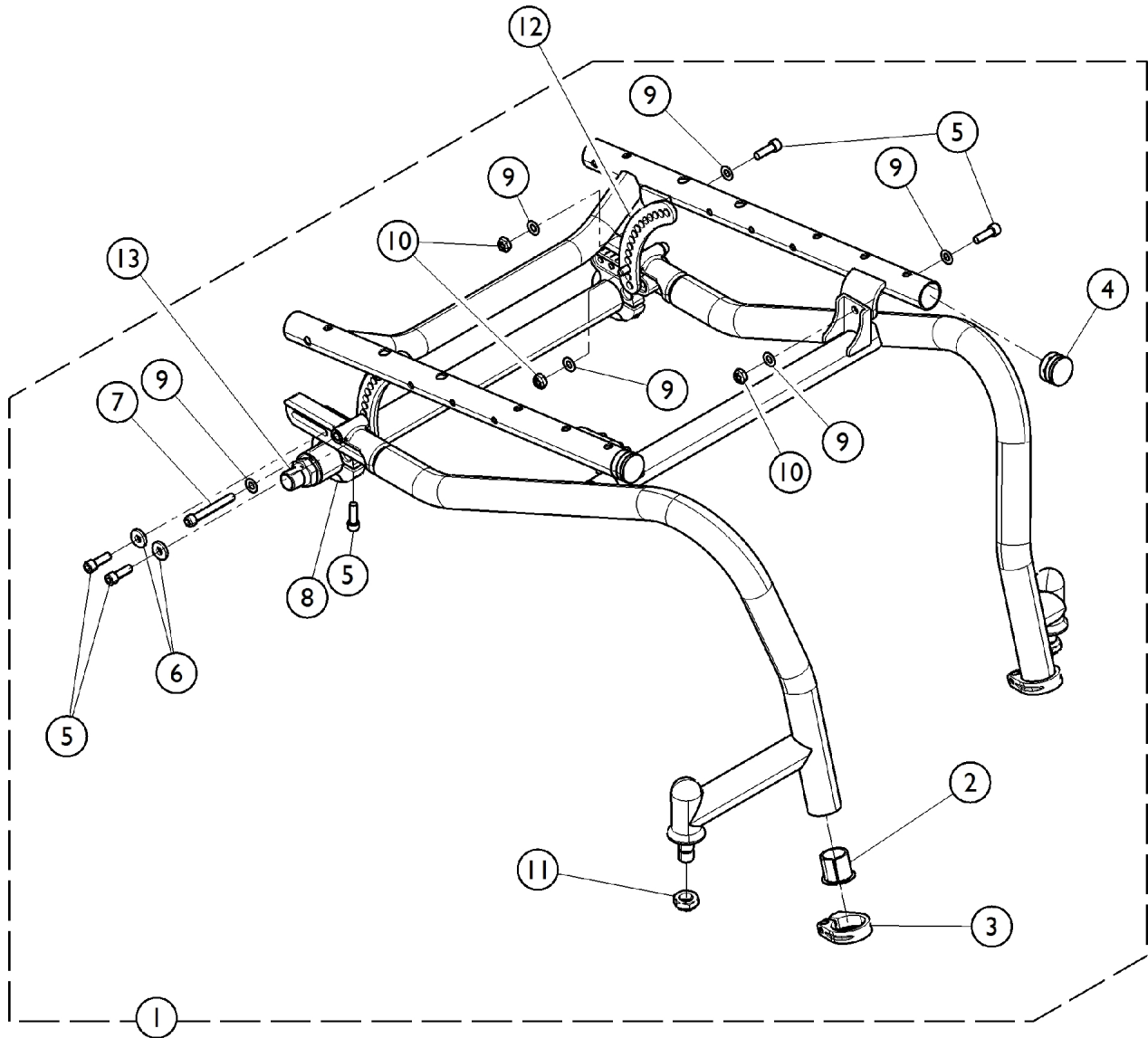


Frame Hardware - Active

If Camber Tube is to be used on E-Motion system, please order new Frame Hardware 1157286 and use 1133693 (2) and 1157254 (4) from this hardware (refer to category "Frame Hardware - Active") as the replacement for the T7A Camber Clamp (1166127, Item 8). Also replace the 0 degree camber tube from the T7A (8881169807) with (8881143275) from the T6A (also in the "Frame Hardware - Active category"). Please refer to special C-111222123210 for additional information. Parts in 1157286 cannot be sold separately.



Frame Hardware - Active

If Camber Tube is to be used on E-Motion system, please order new Frame Hardware 1157286 and use 1133693 (2) and 1157254 (4) from this hardware (refer to category "Frame Hardware - Active") as the replacement for the T7A Camber Clamp (1166127, Item 8). Also replace the 0 degree camber tube from the T7A (8881169807) with (8881143275) from the T6A (also in the "Frame Hardware - Active category). Please refer to special C-111222123210 for additional information. Parts in 1157286 cannot be sold separately.

| Item Number | Note | Part Number | Description | Quantity Per | |
|-------------|------|--------------------|---|--------------|----------|
| | | | | Package | Assembly |
| 1 | A | 1180302-NLA | NLA - Kit, Hardware, Frame, T7A | 1 | 1 |
| 2 | | | Spacer, Footrest | 1 | 2 |
| 3 | | | Clamp, Tube, Footrest | 1 | 2 |
| 4 | | | Plug Button, Black (1") | 1 | 2 |
| 5 | | | NLA - Screw, Socket Head, Cap (1/4-28 x 3/4") | 1 | 10 |
| 6 | | | Washer, Steel (1/4 x 5/8 x 3/32") | 1 | 4 |
| 7 | | | Screw (1/4-28 x 1-7/8") | 1 | 2 |
| 8 | | | Clamp, Tube, Camber | 1 | 2 |
| 9 | | | Washer (1/4 x 1/2 x 1/40) | 1 | 12 |
| 10 | | | Screw (1/4-28 x 1-7/8") | 1 | 2 |
| 11 | | | Locknut (1/2-20) | 1 | 2 |
| 12 | | See Chart | #12 Crescent Link | 1 | 2 |
| 13 | B | 8881169807-NL A | NLA - Camber Tube Assembly, Color, 0 Degree | 1 | 2 |
| 13 | B | 8881169808-NL A | NLA - Camber Tube Assembly, Color, 3 Degree | 1 | 2 |
| 13 | B | 8881169809-NL A | NLA - Camber Tube Assembly, Color, 6 Degree | 1 | 2 |

NOTE: A - Includes items 2 thru 12.
B - Specify frame color when ordering, see category titled, "Frame Finishes." Quote number SM-090608125056 must be referenced when a new Camber Tube Assembly is ordered

#12 Crescent Link

| Rear Seat to Floor Height | Black | Silver | Blue | Red |
|---------------------------|-------------|-------------|-------------|-------------|
| 14 - 14-1/2 " | 1157267-NLA | 1157269-NLA | 1157266-NLA | 1157268-NLA |
| 15 - 16" | 1157271 | 1157273-NLA | 1157270-NLA | 1157272-NLA |
| 16.5 - 17.5" | 1157275-NLA | 1157277-NLA | 1157274-NLA | 1157276 |
| 18 - 20" | 1157279-NLA | 1157281-NLA | 1157278-NLA | 1157280-NLA |

When ordering a replacement anodized part, the customized anodized finish may appear slightly different. This subtle difference contributes to its uniqueness. If a more uniformed appearance is desired, order these parts in pairs.