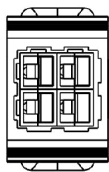
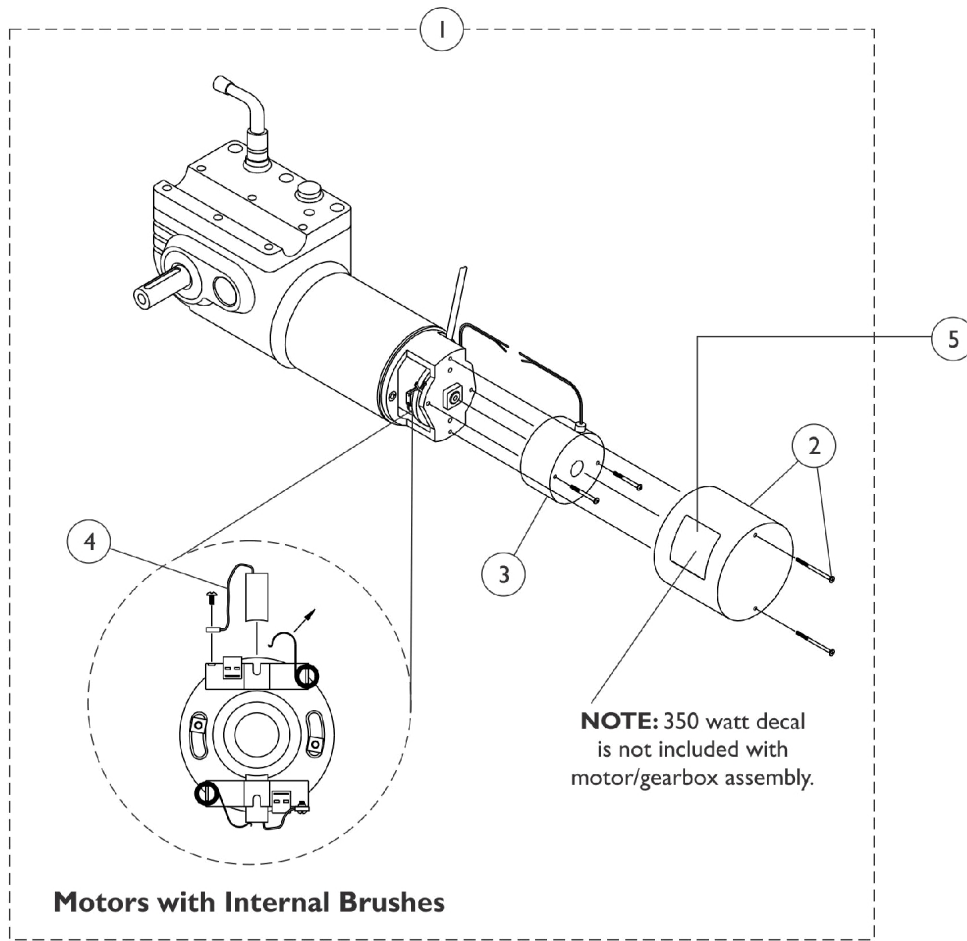
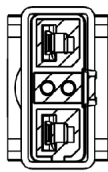


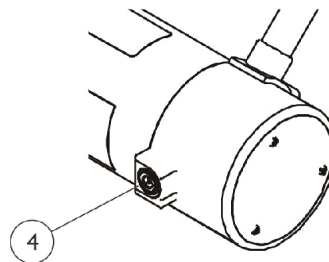
# 2-Pole Motor and Gearbox Assembly



**Motor Connector (Square)**  
Before 2/15/03 for MKIV Electronics



**Motor Connector (Rectangular)**  
After 2/14/03 for Mk5 Electronics



**Motors with External Brushes**  
(introduced 2/24/06)

## 2-Pole Motor and Gearbox Assembly

Item Number	Note	Part Number	Description	Quantity Per	
				Package	Assembly
1	A,B	1107665-NLA	NLA - Motor/Gearbox Assembly - Right	1	1
1	A,B	1107666-NLA	NLA - Motor/Gearbox Assembly - Left	1	1
1	A,C,H	1111707	Motor/Gearbox Assembly - Right	1	1
1	A,C,H	1111708	Motor/Gearbox Assembly - Left	1	1
1	A,G	1141282	Motor/Gearbox Assembly - Right	1	1
1	A,G	1141283	Motor/Gearbox Assembly - Left	1	1
2	A	1038361-NLA	NLA - Kit, Motor/Brake Covers with Screws	2	1
3		1055872-NLA	NLA - Brake, Spring Set with Screws	1	1
4	D	1123528-NLA	NLA - Kit, Motor Brush - Internal (Large)	2	1
4	E	1137265-NLA	NLA - Kit, Motor Brush w/ Cap - External (Pair)	2	1
	F	1122164	Instruction Sheet, Motor Brush Kit	1	1
5		1107653-NLA	NLA - Decal, 2 Pole Motor (350 Watts)	1	1

NOTE: A - Item 5 not included  
 B - Before 2/15/03 for MKIV controller only.  
 C - Chairs built from 2/14/03 thru 2/23/06 for MK5 controller only. Contains internal motor brushes.  
 D - For motors with internal brushes. Includes 2 ea. brushes and 1 ea. instruction sheet.  
 E - For motors with external brushes. Includes 2 ea. brushes, 2 ea. brush caps, and 1 ea. instruction sheet.  
 F - Not Shown  
 G - Chairs built After 2/23/06 for MK5 controller only. Due to alternate suppliers, replacement motors may contain either internal or external motor brushes.  
 H - Due to alternate suppliers, replacement motors may contain either a (black longer cap w/ internal brushes) or (silver metal cap w/ external brushes). Motors are interchangeable.