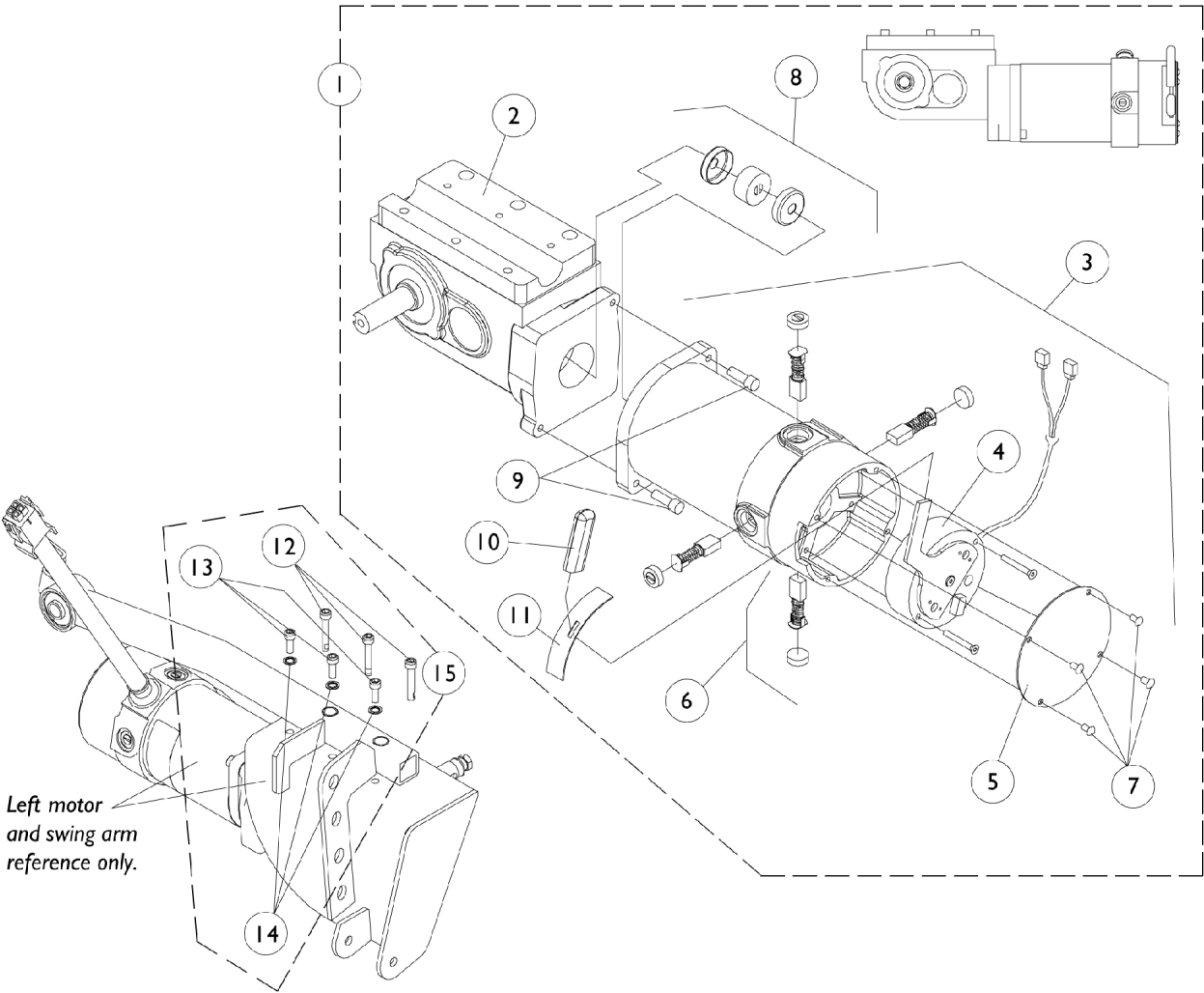


4-Pole Motor and Gearbox



4-Pole Motor and Gearbox

Item Number	Description	Right	Left
1.	Motor/Gearbox Before 10/29/01	1086218-NLA See Note(s) D	1086217-NLA See Note(s) D
1.	Motor/Gearbox After 10/28/01	1109170-NLA	1109169-NLA
2.	Gearbox	1086228-NLA See Note(s) C	1086227-NLA See Note(s) C
3.	Motor Assembly Before 10/29/01	1086788-NLA	1087218-NLA
3.	Motor Assembly After 10/28/01	1109229-NLA	1109228-NLA
4.	Brake Repair Kit	1070295-NLA See Note(s) F	1070294-NLA See Note(s) F
5.	Brake Cover w/ Screws Before 10/29/01	1070297-NLA	1070297-NLA
5.	Brake Cover (Black) w/ Screws After 10/28/01	1104402-NLA	1104402-NLA
6.	Brushes w/ Caps	1070296-NLA See Note(s) E	1070296-NLA See Note(s) E
7.	Screw, Socket Pan Head (8-32 x 1/4")	SEE ITEM 5	SEE ITEM 5
8.	NLA - Coupling w/ Cup (1" Diameter)	5165204-NLA See Note(s) A	5165204-NLA See Note(s) A
8.	NLA - Coupling w/ Cup (1-5/16" Diameter)	50000X007-NLA See Note(s) B	50000X007-NLA See Note(s) B
9.	Screw, SHC (1/4-20 x 1-1/8")	1043594 See Note(s) C	1043594 See Note(s) C
9.	Screw, SHC (M6 x 1 x 20MM)	1108978 See Note(s) C	1108978 See Note(s) C
10.	Plastic Tip Before 10/29/01	1082984-NLA	1082984-NLA
10.	Plastic Tip After 10/28/01	1101725	1101725
11.	Slotted Plate	1082985-NLA	1082985-NLA
12.	Screw, Socket Head Cap w/ Patch (M6 x 35MM)	1071504-NLA	1071504-NLA
13.	Screw, Socket Head Cap w/ Patch (M6 x 16MM)	1080713-NLA	1080713-NLA
14.	Washer, Internal Tooth (1/4")	10513X000-NLA	10513X000-NLA
15.	Motor Attaching Hardware (Includes Items 12, 13 and 14)	1095440-NLA	1095440-NLA

4-Pole Motor and Gearbox

NOTE: A - Coupling with Cup for chairs manufactured before 11/12/01 - Use part # 50000X007 as a direct replacement part.
B - After 11/11/01 Coupling with Cup was resized from approximately 1" to 1-5/16" diameter and can be used as a direct replacement for part number 5165204
C - When a new gearbox or mounting screws are ordered, (2 ea.) metric and (2 ea.) non-metric screws (item 9) must be ordered. Invacare Corp. utilizes alternate suppliers for this part number.
D - As of May 2008, the Metal Motor End Cap will be replaced with a Composite Motor End Cap. The change does not affect form, fit, function or aesthetics.
E - Kit includes (4) Brushes, (4) Brush Caps and Instruction Sheet.
F - Use existing screws when installing the Brake Repair Kit. The Motor Brake Mounting Screws are not saleable.