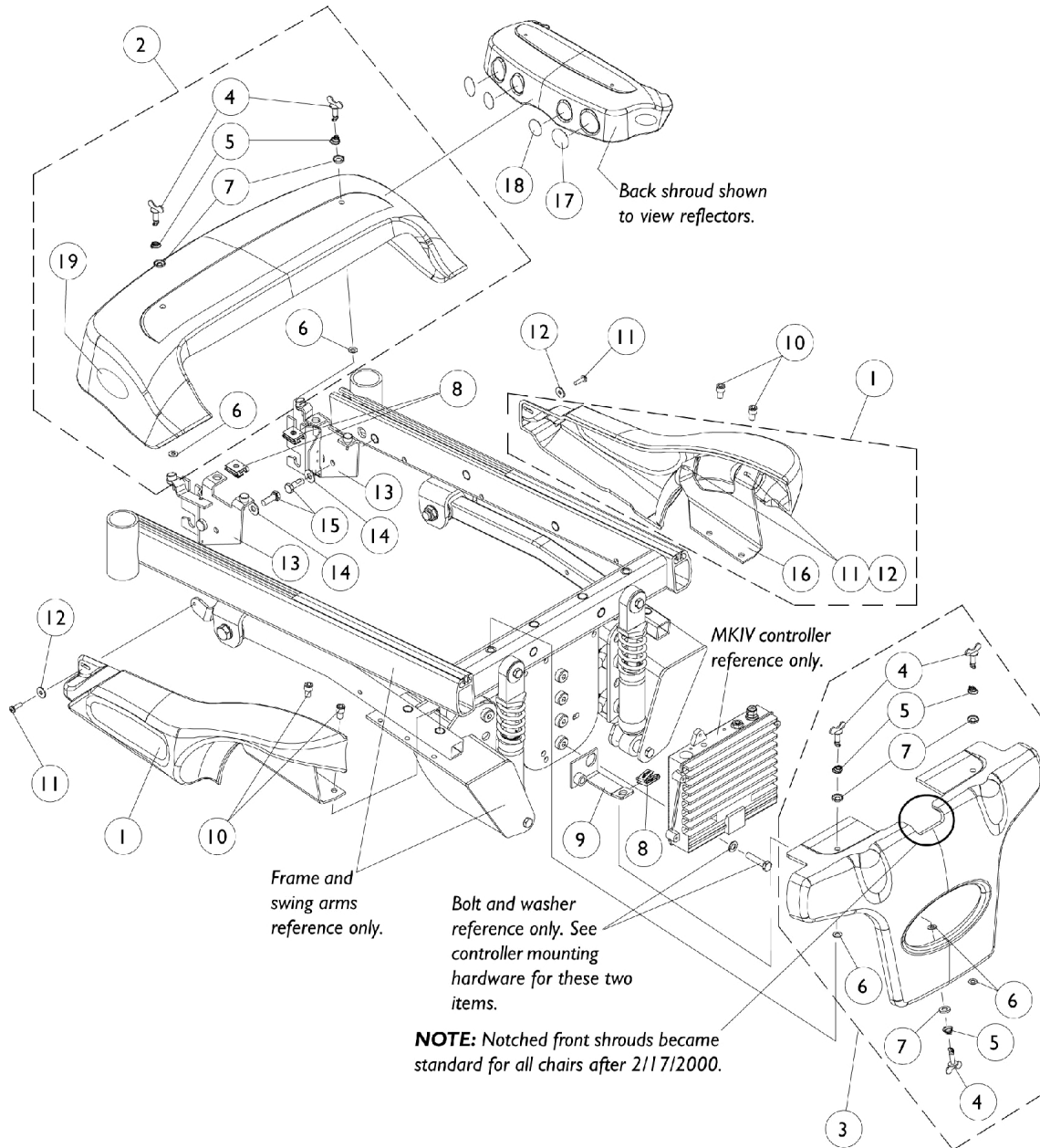


Shroud Covers

NOTE: Bright Metallic Blue, Blue-Green Chameleon are NLA and Candy Apple Red changed from a matte finish to a glossy finish after 2/17/2000. Refer to the color conversion packages to choose a new color for chairs manufactured before 2/18/2000.

NOTE: For rear shrouds that are exclusively used with a vent tray assembly kit, see the 2nd Generation Powered Seating System parts book form # 99-150 under Vent Tray Assembly FWD.



Shroud Covers

NOTE: Bright Metallic Blue, Blue-Green Chameleon are NLA and Candy Apple Red changed from a matte finish to a glossy finish after 2/17/2000. Refer to the color conversion packages to choose a new color for chairs manufactured before 2/18/2000.

NOTE: For rear shrouds that are exclusively used with a vent tray assembly kit, see the 2nd Generation Powered Seating System parts book form # 99-150 under Vent Tray Assembly FWD.

Item Number	Note	Part Number	Description	Quantity Per	
				Package	Assembly
1-3		See Chart	Shroud Covers	1	1
4		1070574-NLA	NLA - Stud, Wing Head (1" Long)	1	5
5		1093312-NLA	NLA - Spring, Torsion Ejector	1	5
6		1070580-NLA	NLA - Washer, Nylon Retainer (1/4 x 1/2 x 1/32")	1	5
7		1070581-NLA	NLA - Washer, Nylon Cupped (9/32 x 19/32 x 3/32")	1	5
8		1013497-NLA	NLA - Fastener, Turn, Clip-On (1/4")	1	3
9		1091526-NLA	NLA - Bracket, Shroud Mounting, Front, Black	1	1
10		1091541-NLA	NLA - Screw, Socket Head Cap (5/16-18 x 1/2")	1	4
11		1028755	Screw, Phillips Pan Head (#10-32 x 5/8")	1	6
12		1070587	Washer, Flat (3/16 x 5/8 x 1/16")	1	6
13		1091520-NLA	NLA - Bracket with Stem Bumpers, Counter Weight Support - Right	1	1
13		1091521-NLA	NLA - Bracket with Stem Bumpers, Counter Weight Support - Left	1	1
14		1074133	Washer, Steel (5/16 x 3/4 x 1/16")	1	2
15		1070462-NLA	NLA - Screw, Hex Head w/ Patch (5/16-18 x 7/8")	1	2
16		1091529-NLA	NLA - Bracket, Slide Shroud Mounting, Black - Right	1	1
16		1091530-NLA	NLA - Bracket, Slide Shroud Mounting, Black - Left	1	1
17		1092416-NLA	NLA - Reflector, Outside (2-1/8" W x 2-1/2" T)	1	2
18		1092417-NLA	NLA - Reflector, Inside (1-3/4" W x 2-1/16" T)	1	2
19		1095489	Decal, Invacare 3-D Logo (2-1/2" L)	1	2

Shroud Covers

Shrouds After 2/17/2000

Item Number	Description	Side	Ocean Blue	Emerald Green	Liquid Black	Candy Apple Red
1.	Side Panel w/ Mtg. Bracket	Right	1096848-NLA	1096843-NLA	1096853-NLA	1095213-NLA
		Left	1096849-NLA	1096844-NLA	1096854-NLA	1095214-NLA
2.	Rear Shroud Assembly w/ Reflectors and Invacare Logo Decal		1096847-NLA	1096852-NLA	1096857-NLA	1095218-NLA
3.	Front Shroud Assembly See Note(s) A		1096846-NLA	1096851-NLA	1096856-NLA	1095216-NLA

Shroud Covers

NOTE: Bright Metallic Blue, Blue-Green Chameleon are NLA and Candy Apple Red changed from a matte finish to a glossy finish after 2/17/2000. Refer to the color conversion packages to choose a new color for chairs manufactured before 2/18/2000.

NOTE: For rear shrouds that are exclusively used with a vent tray assembly kit, see the 2nd Generation Powered Seating System parts book form # 99-150 under Vent Tray Assembly FWD.

Shroud Covers

Shrouds After 2/17/2000

Item Number	Description	Side	Ocean Blue	Emerald Green	Liquid Black	Candy Apple Red
not shown	Color Conversion Package (Includes Items 1-3)		1097125-NLA	1097126-NLA	N/A	1097124-NLA
NOTE: A - Notched front shrouds as shown on page 65 became standard for all chairs after 2/17/2000. Front shrouds without notches were discontinued.						