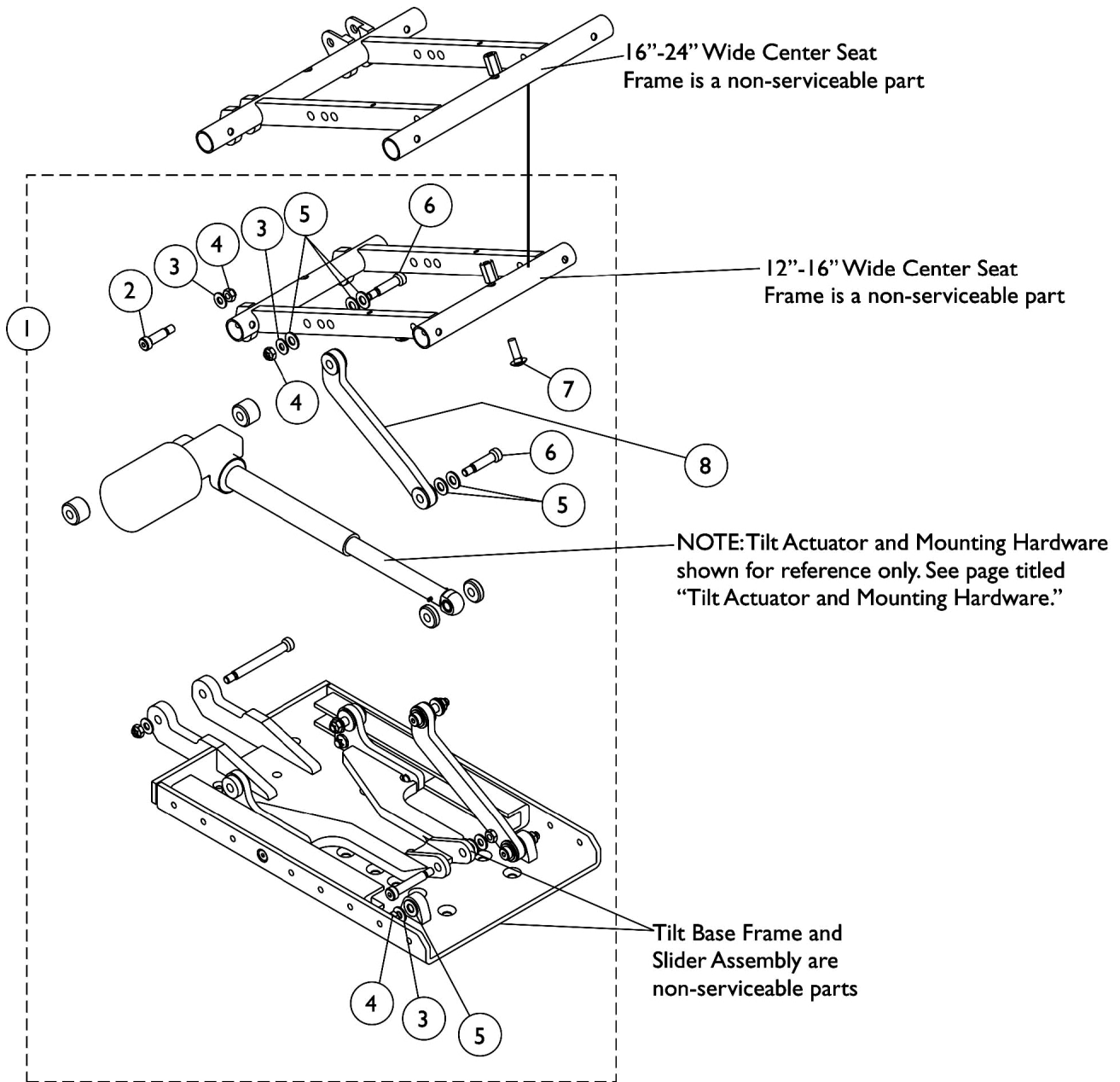


# Tilt Links and Mounting Hardware

Before 4/2/13

NOTE: Item #8 Tilt Links are currently not available as a service part in the field.



## Tilt Links and Mounting Hardware Before 4/2/13

**NOTE: Item #8 Tilt Links are currently not available as a service part in the field.**

Item Number	Note	Part Number	Description	Quantity Per	
				Package	Assembly
1	A,B,C	1146451-NLA	NLA - Kit, Tilt Link Mounting Hardware (12" - 16" W)	1	1
2			NLA - Screw, Shoulder Hex Socket Head (3/8 x 1", 5/16-18)	1	2
3			Washer, Steel (11/32 x 11/16 x 1/16")	1	6
4			Locknut (5/16-18)	1	6
5			Washer, Nylon (3/8 x 13/16 x 1/16")	1	12
6			Screw, Shoulder Hex Socket (3/8 x 1-1/4", 5/16-18)	1	4
7			Bolt, Round Head Square Neck (5/16-18 x 1")	1	2
1	A,B,C	1144587-NLA	NLA - Kit, Tilt Link Mounting Hardware (16" - 24" W)	1	1
2			Screw, Shoulder Hex Socket Head (3/8 x 1-1/2", 5/16-18)	1	2
3			Washer, Steel (11/32 x 11/16 x 1/16")	1	6
4			Locknut (5/16-18)	1	6
5			Washer, Nylon (3/8 x 13/16 x 1/16")	1	12
6			Screw, Shoulder Hex Socket (3/8 x 1-1/4", 5/16-18)	1	4
7			Bolt, Round Head Square Neck (5/16-18 x 1")	1	2
<p>NOTE: A - Includes items 2-7. Tilt Link Mounting Hardware is used for both Conventional and Smart Actuator Motors            B - Item #8 Tilt Links are currently not available as a service part in the field.            C - No Longer Available. See page titled "Tilt Links and Mounting Hardware After 4/1/13". Part #1146451 replaced with 1180311. Part #1144587 replaced with 1180312.</p>					