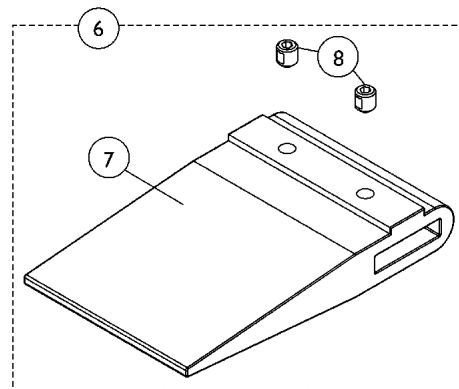
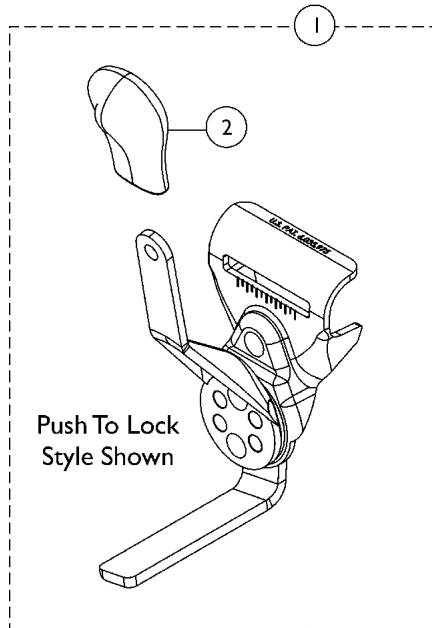
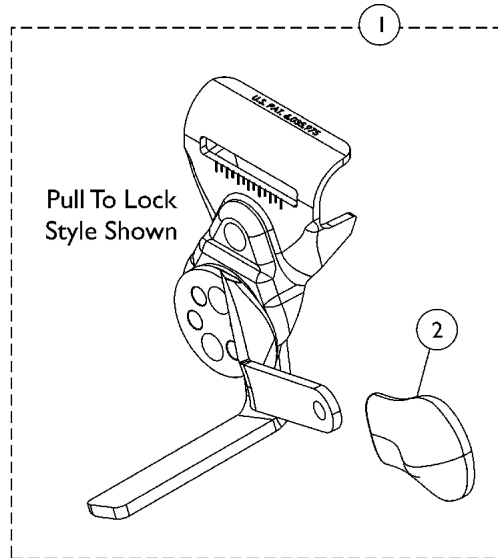
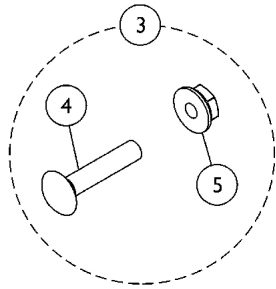


Disk Style Wheel Locks

9690/9691, Conventional or Space Saver Arm, 9XT/9XDT/9SL
(8/14/03-4/13/07 Stock) (After 4/13/07 Bldr.)



Disk Style Wheel Locks

9690/9691, Conventional or Space Saver Arm, 9XT/9XDT/9SL (8/14/03-4/13/07 Stock) (After 4/13/07 Bldr.)

Item Number	Note	Part Number	Description	Quantity Per	
				Package	Assembly
1	A,H,HI, J	1110227-NLA	NLA - Wheel Lock Assembly, Disk Pull to Lock, Black - Right	1	1
1	A,H,HI, J	1110228-NLA	NLA - Wheel Lock Assembly, Disk Pull to Lock, Black - Left	1	1
1	A,H,HI, J	1110225-NLA	NLA - Wheel Lock Assembly, Disk Push to Lock, Black - Right	1	1
1	A,H,HI, J	1110226-NLA	NLA - Wheel Lock Assembly, Disk Push to Lock, Black - Left	1	1
2		1110160-NLA	NLA - Tip, Plastic Wheel Lock Handle, Black	1	1
3	B	1017677	Kit, Hardware, Wheel Lock (Pair)	1	1
4			Bolt, Carriage (1/4-20 x 1-1/4")	1	2
5			Nut, Hex Flang (1/4-20)	1	2
6	C,D,G	1067279	Kit, Wheel Lock Shoe Spacer	1	1
7			Spacer, Wheel Lock Shoe (2-7/16")	1	1
8			Screw, Set Socket Cup Point (#8-32 x 3/16")	1	2
6	C,E,G	1048656	Kit, Wheel Lock Shoe Spacer	1	1
7			Spacer, Wheel Lock Shoe (1-45/64")	1	1
8			Screw, Set Socket Cup Point (#8-32 x 3/16")	1	2
6	C,F	1037421	Kit, Wheel Lock Shoe Spacer, 20" Rear Wheels (Pair)	1	1
7			Spacer, Wheel Lock Shoe (2-63/64")	1	2
8			Screw, Set Socket Cup Point (#8-32 x 3/16")	1	4
	K,L	1101452	Wheel Lock Assembly, Push to Lock, Black - Right	1	1
	K,L	1101453	Wheel Lock Assembly, Push to Lock, Black - Left	1	1
	K,L	1101454	Wheel Lock Assembly, Pull to Lock, Black - Right	1	1
	K,L	1101455	Wheel Lock Assembly, Pull to Lock, Black - Left	1	1
	K,M	1111924	Wheel Lock Assembly, Push to Lock, Black - Right	1	1
	K,M	1111925	Wheel Lock Assembly, Push to Lock, Black - Left	1	1
	K,M	1111926	Wheel Lock Assembly, Pull to Lock, Black - Right	1	1
	K,M	1111927	Wheel Lock Assembly, Pull to Lock, Black - Left	1	1

NOTE: A - Includes the Wheel Lock and item #2.
B - Includes items 4 and 5.
C - Includes items 7 and 8
D - Used with 22" or 24" Rear Wheels with Amputee Attachment.
E - Used with 22" Rear Wheels without Amputee Attachment.
F - Used with 20" Rear Wheels. Shoe Spacer is used with or without an Amputee Attachment.
G - Kit quantity covers one side only.
H - Disk Style Wheel Locks are no longer available as a Service Part. Must convert to Link-Pivot Style Wheel Locks listed. Order Right/Left side to match. For Conventional Arms use part #'s 1101452/1101453 (Push to Lock) or 1101454/1101455 (Pull to Lock).
HI - For Space Saver Arms use part #'s 1111924/1111925 (Push to Lock) or 1111926/1111927 (Pull to Lock). Can use existing attaching hardware.
J - Additional Wheel Lock information can be found under categories titled "Wheel Locks -9XT/9XDT/9SL-Link-Pivot Style, w/ Conventional Arms" or "Wheel Locks -9XT/9XDT/9SL-Link-Pivot Style, w/ Space Saver Arms".
K - Not Shown
L - Use for Conventional Arms.
M - Use for Space Saver Arms.

NOTE: Stock pick and Bldr. pick dates refer to how the wheel lock option was offered at the time.

NOTE: Push to Lock Wheel Lock is used on an Adult style wheelchair. Pull to Lock Wheel Lock is used on a Hemi style wheelchair.