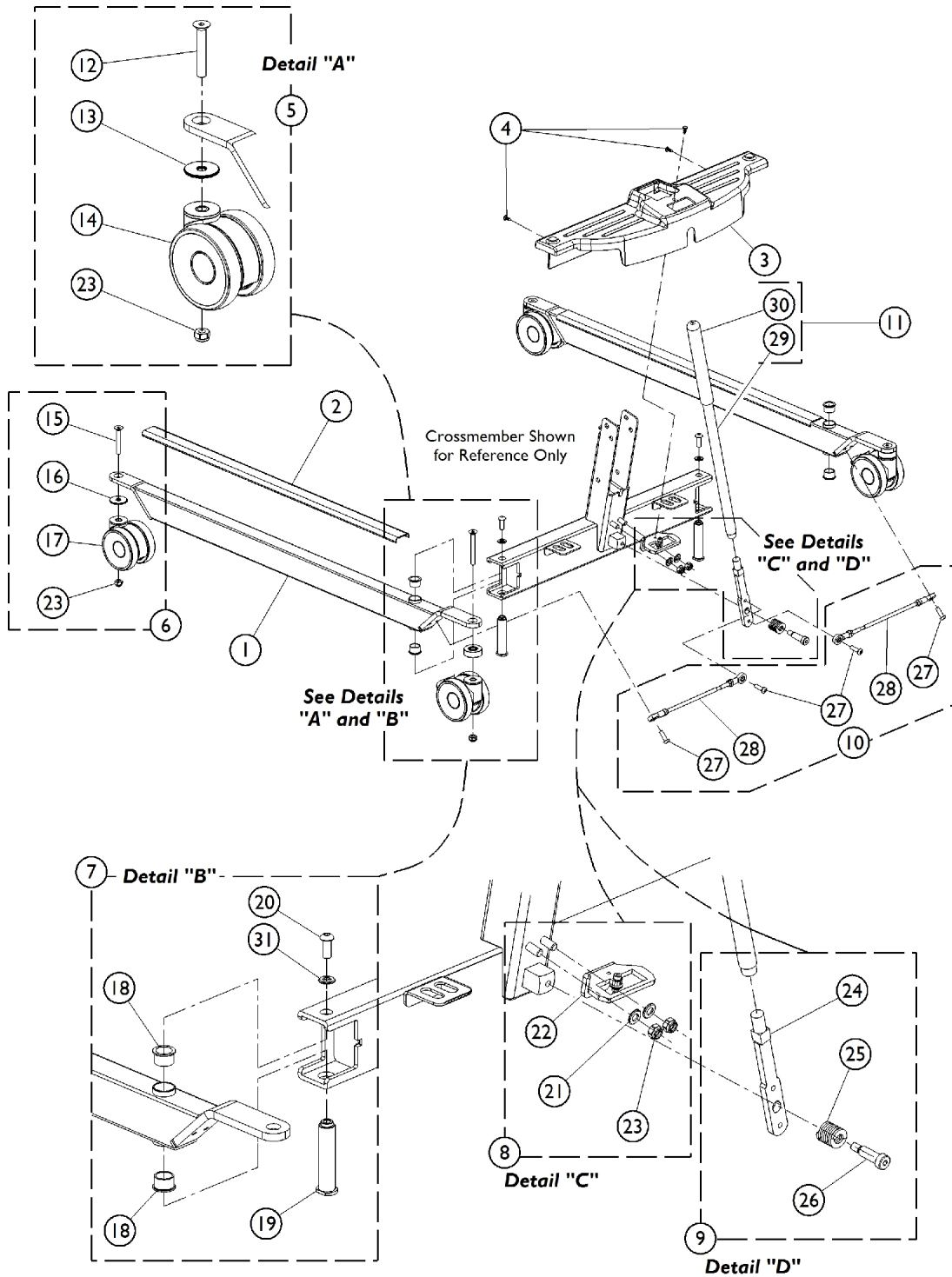


Hydraulic Lift - Base

NOTE: All fasteners must be torqued to IFI/DIN standards.



Hydraulic Lift - Base

NOTE: All fasteners must be torqued to IFI/DIN standards.

| Item Number | Note | Part Number | Description | Quantity Per | |
|-------------|------|-------------|--|--------------|----------|
| | | | | Package | Assembly |
| 1 | | 1156139 | Leg Assembly | 1 | 2 |
| 2 | | 1175245-NLA | NLA - Cover, Leg Protection | 1 | 2 |
| 3 | | 1156233-NLA | NLA - Shroud, Manual Base | 1 | 1 |
| 4 | | 1023632 | Clip, Shroud | 1 | 3 |
| 5 | A | 1177622-NLA | NLA - Kit, Rear Caster w/ Hardware, Locking (Pair) | 1 | 1 |
| 12 | | | Screw, Socket, Countersunk Head (M10 x 1.5 x 85mm) | 1 | 2 |
| 13 | | | Spacer (41.3 x 10.2 x 15mm) | 1 | 2 |
| 14 | | | Caster, Rear Locking | 1 | 2 |
| 23 | | | Locknut (M10 x 1.5mm) | 1 | 2 |
| 6 | B | 1177623-NLA | NLA - Kit, Front Caster w /Hardware (Pair) | 1 | 1 |
| 15 | | | Screw, Socket, Countersunk Head (M10 x 1.5 x 70mm) | 1 | 2 |
| 16 | | | Spacer (40 x 10.5 x 3mm) | 1 | 2 |
| 17 | | | Caster, Front | 1 | 2 |
| 23 | | | Locknut (M10 x 1.5mm) | 1 | 2 |
| 7 | C | 1177624-NLA | NLA - Kit, Leg to Crossmember Mounting Hardware (Pair) | 1 | 1 |
| 18 | | | Bushing, Bronze | 1 | 4 |
| 19 | | | Bushing, Base and Leg | 1 | 2 |
| 20 | | | Screw, Socket Button Head, (M10 x 1.5 x 22mm) | 1 | 2 |
| 31 | | | Lock Washer, Split (M10) | 1 | 2 |
| 8 | D | 1177626-NLA | NLA - Kit, Index Plate w /Hardware | 1 | 1 |
| 21 | | | Washer (10.5 x 20 x 2mm) | 1 | 2 |
| 22 | | | Index Plate Assembly | 1 | 1 |
| 23 | | | Locknut (M10 x 1.5mm) | 1 | 2 |
| 9 | E | 1177627-NLA | NLA - Kit, Handle Mount | 1 | 1 |
| 24 | | | Handle, Mount | 1 | 1 |
| 25 | | | Spring, Compression (1 x 1-1/16 x 1/8") | 1 | 1 |
| 26 | | | Screw, Shoulder Hex Socket Head w/ Patch (1/2" x 1-1/4", 3/8-16) | 1 | 1 |
| 10 | F | 1177629-NLA | NLA - Kit, Linkage (Pair) | 1 | 1 |
| 27 | | | Screw, Socket Button Head w/ Patch (M8 x 1.25 x 25mm) | 1 | 4 |
| 28 | | | Tie Rod Assembly | 1 | 2 |
| 11 | G | 1177628 | NLA - Kit, Handle w /Grip | 1 | 1 |
| 29 | | | Handle | 1 | 1 |
| 30 | | | Grip, Cane | 1 | 1 |

NOTE: A - Includes items 12-14 and 23.
 B - Includes items 15-17 and 23.
 C - Includes items 18-21.
 D - Includes items 21-23.
 E - Includes items 24-26.
 F - Includes items 27-28.
 G - Includes items 29-30.