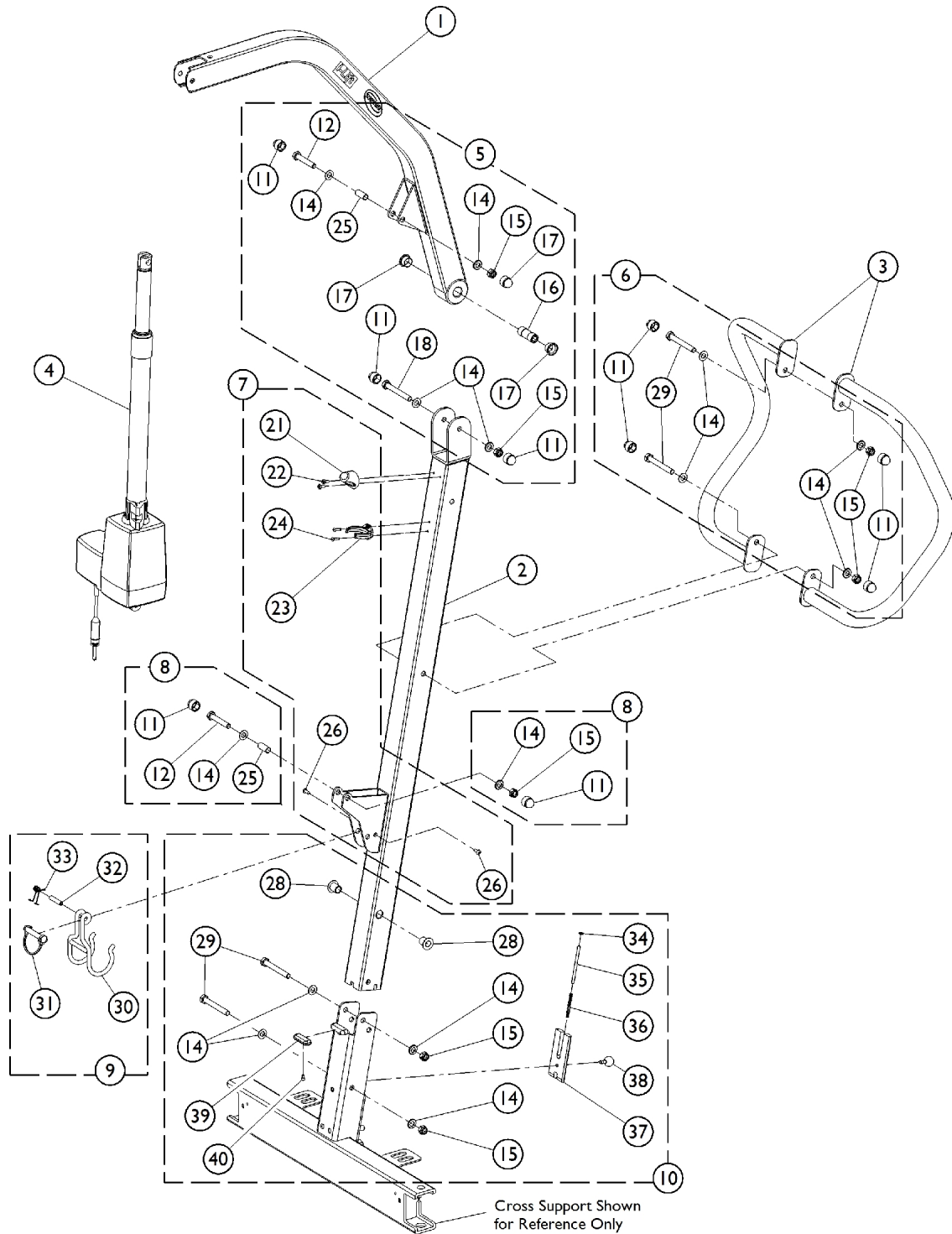


Manual Lift - Mast / Boom Assembly

NOTE: All fasteners must be torqued to IFI/DIN standards.



Manual Lift - Mast / Boom Assembly

NOTE: All fasteners must be torqued to IFI/DIN standards.

| Item Number | Note | Part Number | Description | Quantity Per | |
|-------------|------|-------------|---|--------------|----------|
| | | | | Package | Assembly |
| 1 | | 1156153 | Boom Assembly | 1 | 1 |
| 2 | | 1156240-NLA | NLA - Mast Assembly, Manual | 1 | 1 |
| 3 | | 1156267-NLA | NLA - Push Handle | 1 | 2 |
| 4 | G | 60126449 | Actuator Motor w/ Bushings | 1 | 1 |
| 5 | A | 1177610 | NLA - Kit, Boom Mounting Hardware | 1 | 1 |
| 11 | | | Cap, End | 1 | 4 |
| 12 | | | Screw, Hex Head (M10 x 1.5 x 58mm) | 1 | 1 |
| 13 | | | Screw, Shoulder Hex Socket Head (3/8 x 1-1/2", 5/16-18) | 1 | 1 |
| 14 | | | Washer (10.5 x 20 x 2mm) | 1 | 4 |
| 15 | | | Locknut (M10 x 1.5mm) | 1 | 2 |
| 16 | | | Bushing (10 x 18 x 49mm) | 1 | 1 |
| 17 | | | Bearing, Teflon | 1 | 2 |
| 18 | | | Screw, Hex Head (M10 x 1.5 x 80mm) | 1 | 1 |
| 19 | | | Washer, Nylon (20 x 10.2 x 4.2mm) | 1 | 2 |
| 20 | | | Locknut (5/16-18) | 1 | 1 |
| 25 | | | Bushing (10 x 12 x 28mm) | 1 | 1 |
| 6 | B | 1177611 | Kit, Push Handle Mounting Hardware | 1 | 1 |
| 11 | | | Cap, End | 1 | 4 |
| 14 | | | Washer (10.5 x 20 x 2mm) | 1 | 4 |
| 15 | | | Locknut (M10 x 1.5mm) | 1 | 2 |
| 29 | | | Screw, Hex Head (M10 x 1.5 x 75mm) | 1 | 2 |
| 7 | C | 1177612 | NLA - Kit, Actuator Hardware, Mast | 1 | 1 |
| 21 | | | Protector, Mast | 1 | 1 |
| 22 | | | Screw, Socket Head Cap (M5 x .8 x 10mm) | 1 | 2 |
| 41 | | | Clip, Hydraulic | 1 | 1 |
| 23 | | | Clip, Actuator | 1 | 1 |
| 24 | | | Rivet (4 x 14mm) | 1 | 2 |
| 26 | | | Screw, Socket Button Head (M5 x .8 x 12mm) | 1 | 2 |
| 8 | D | 1177613 | Kit, Actuator Mounting Hardware | 1 | 1 |
| 11 | | | Cap, End | 1 | 2 |
| 12 | | | Screw, Hex Head (M10 x 1.5 x 58mm) | 1 | 1 |
| 14 | | | Washer (10.5 x 20 x 2mm) | 1 | 2 |
| 15 | | | Locknut (M10 x 1.5mm) | 1 | 1 |
| 25 | | | Bushing (10 x 12 x 28mm) | 1 | 1 |
| 27 | | | Lock, Wire | 1 | 1 |
| 9 | E | 1177615 | Kit, Folding Hook | 1 | 1 |
| 30 | | | Hook, Folder | 1 | 1 |
| 31 | | | Pin, Locking shaft (10 x 50mm) | 1 | 1 |
| 32 | | | Pin (8 x 36mm) | 1 | 1 |
| 33 | | | Spring, Hook | 1 | 1 |
| 10 | F | 1177614 | Kit, Mast Connector Hardware | 1 | 1 |
| 14 | | | Washer (10.5 x 20 x 2mm) | 1 | 4 |
| 15 | | | Locknut (M10 x 1.5mm) | 1 | 2 |

Manual Lift - Mast / Boom Assembly

NOTE: All fasteners must be torqued to IFI/DIN standards.

| Item Number | Note | Part Number | Description | Quantity Per | |
|---|------|-------------|---|--------------|----------|
| | | | | Package | Assembly |
| 28 | | | Bearing (16 x 10 x 25mm) | 1 | 2 |
| 29 | | | Screw, Hex Head (M10 x 1.5 x 75mm) | 1 | 2 |
| 34 | | | Washer (5.2 x 10 x 1mm) | 1 | 1 |
| 35 | | | Pin, Lock Plate (M5 x 80mm) | 1 | 1 |
| 36 | | | Spring (.5 x 5 x 50mm) | 1 | 1 |
| 37 | | | Plate, Lock | 1 | 1 |
| 38 | | | Ball (20mm) w/ Stud, Threaded (M6 x 1 x 13mm) | 1 | 1 |
| 39 | | | Rubber, Anti Scratch | 1 | 1 |
| 40 | | | Screw (M4 x 7mm) | 1 | 1 |
| <p>NOTE: A - Includes items 11-20 and 25. Items 13, 19 and 20 are not used on this Model and are not shown. B - Includes items 11-15 and 29.. C - Includes items 21-24, 26 and 41. Item 41 is not used on this Model and is not shown. D - Includes items 11-12, 14-15, 25 and 27. Item 27 is not used on this Model and is not shown. E - Includes items 30-33. F - Includes items 14-15, 28-29 and 34-40. G - Part #1078273 Actuator Motor is No Longer Available and replaced with part #60126449 Actuator Motor that now includes press-fitted Bushings. Item #25 Bushing no longer required</p> <p>Note: Items that are not shown on Illustration but are included in Kits on this page are used for other Model Applications.</p> | | | | | |