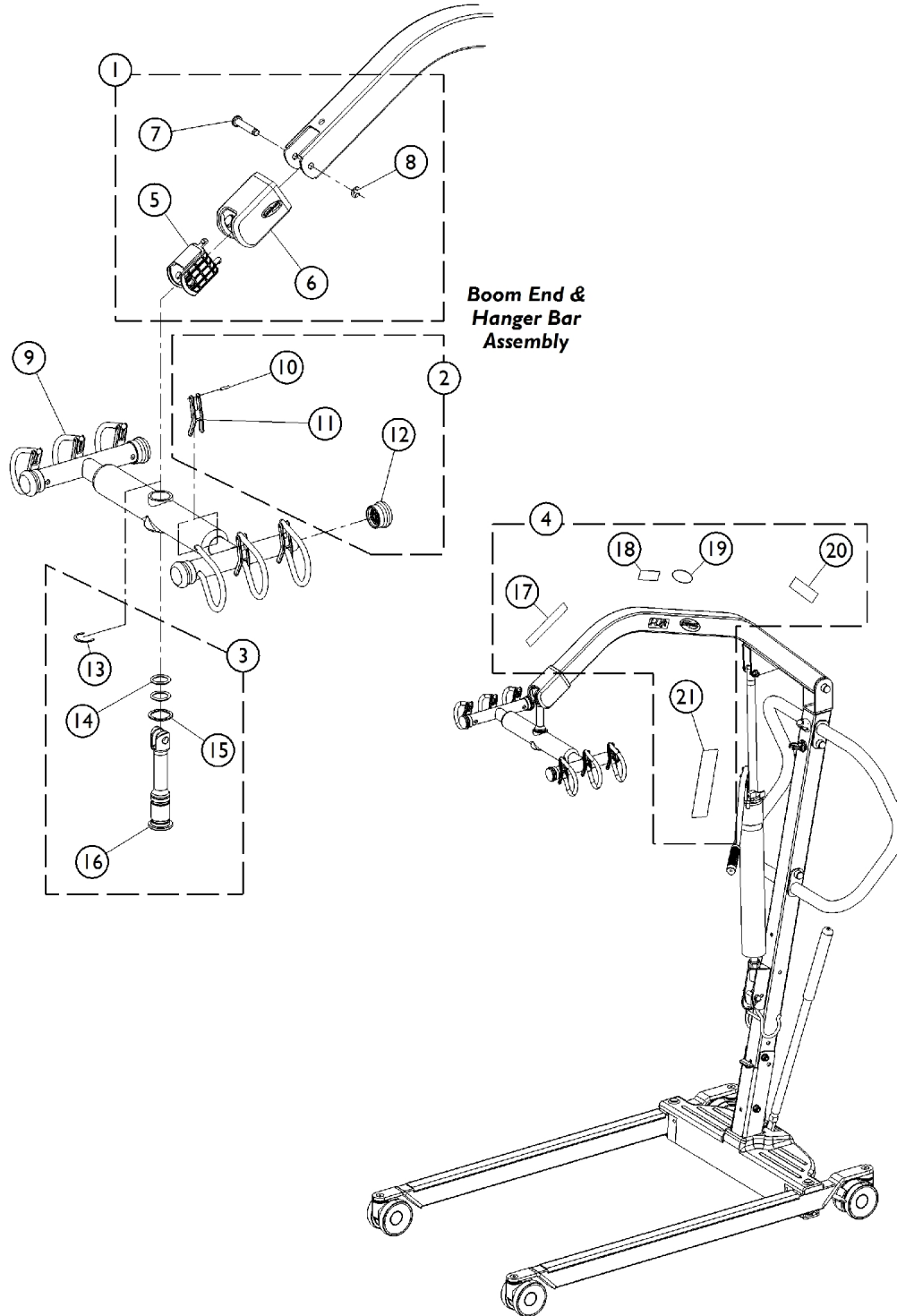


Hydraulic Lift - Hanger Bar and Labels

NOTE: All fasteners must be torqued to IFI/DIN standards.



Hydraulic Lift - Hanger Bar and Labels

NOTE: All fasteners must be torqued to IFI/DIN standards.

Item Number	Note	Part Number	Description	Quantity Per	
				Package	Assembly
1	A	1177616	Kit, Hanger Bar Mounting Hardware	1	1
5			Plug, Boom	1	1
6			Foam, Cover	1	1
7			Pin, Clevis (M10)	1	1
8			Clip (M10)	1	1
9	B	1177640-NLA	NLA - Hanger Bar Assembly	1	1
2	C	1177617-NLA	NLA - Kit, Hanger Bar Retainer Strap and Plug Button	1	1
10			Pin, Roll	1	6
11			Strap Retainer	1	6
12			Plug, Hanger Bar	1	4
3	D	1177618	Kit, Hanger Bar Pin Assembly	1	1
13			Clip, "C"	1	1
14			O-Ring	1	2
15			Washer, Bearing	1	1
16			Pin, Hanger Bar	1	1
4	E	1177620	Kit, Label	1	1
17			Label, Weight US	1	1
18			Label, I-Lift	1	2
19			NLA - Decal, Invacare Logo (3.1)	1	2
20			Label, Sling	1	2
21			Label, Warning, Lift, 450 Pound Capacity	1	1
<p>NOTE: A - Includes items 5, 6, 7, and 8. B - Includes the Hanger Bar and items 10, 11, and 12. C - Includes items 11, 12, and 13. D - Includes items 13, 14, 15, and 16. E - Includes items 17 - 21.</p>					