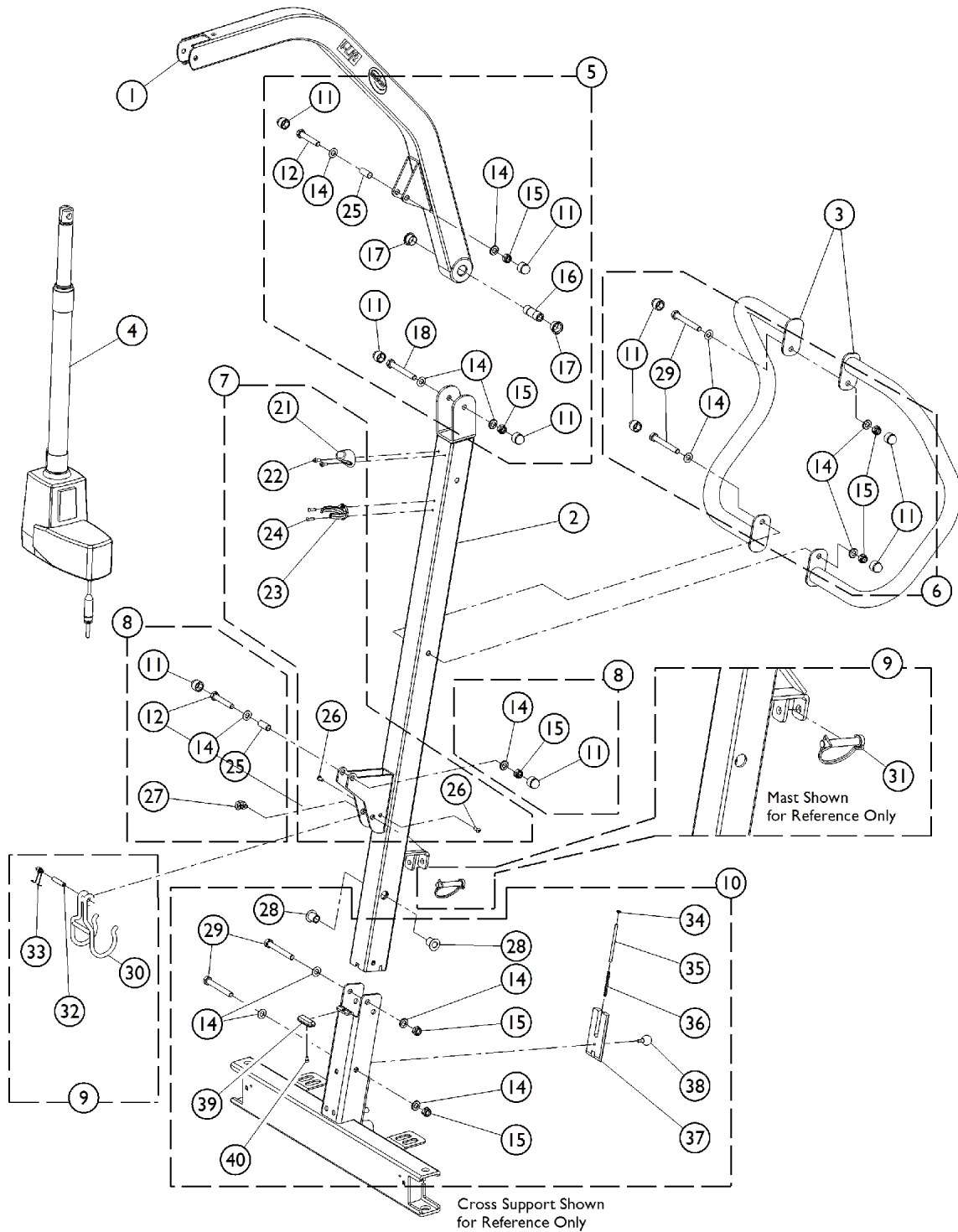


Electric Lift - Mast / Boom Assembly

NOTE: Items that are not shown in this category but are included in Kits in the Parts List are used on other I-Lift Applications. All fasteners must be torqued to IFI/DIN standards.



Electric Lift - Mast / Boom Assembly

NOTE: Items that are not shown in this category but are included in Kits in the Parts List are used on other I-Lift Applications. All fasteners must be torqued to IFI/DIN standards.

Item Number	Note	Part Number	Description	Quantity Per	
				Package	Assembly
1		1156153	Boom Assembly	1	1
2		1156148-NLA	NLA - Mast Assembly, Electric	1	1
3		1156267-NLA	NLA - Push Handle	1	2
4	G	60126449	Actuator Motor w/ Bushings	1	1
5	A	1177610	NLA - Kit, Boom Mounting Hardware	1	1
11			Cap, End	1	4
12			Screw, Hex Head (M10 x 1.5 x 58mm)	1	1
13			Screw, Shoulder Hex Socket Head (3/8 x 1-1/2", 5/16-18)	1	1
14			Washer (10.5 x 20 x 2mm)	1	4
15			Locknut (M10 x 1.5mm)	1	2
16			Bushing (10 x 18 x 49mm)	1	1
17			Bearing, Teflon	1	2
18			Screw, Hex Head (M10 x 1.5 x 80mm)	1	1
19			Washer, Nylon (20 x 10.2 x 4.2mm)	1	2
20			Locknut (5/16-18)	1	1
25			Bushing (10 x 12 x 28mm)	1	1
6	B	1177611	Kit, Push Handle Mounting Hardware	1	1
11			Cap, End	1	4
14			Washer (10.5 x 20 x 2mm)	1	4
15			Locknut (M10 x 1.5mm)	1	2
29			Screw, Hex Head (M10 x 1.5 x 75mm)	1	2
7	C	1177612	NLA - Kit, Actuator Hardware, Mast	1	1
21			Protector, Mast	1	1
22			Screw, Socket Head Cap (M5 x .8 x 10mm)	1	2
41			Clip, Hydraulic	1	1
23			Clip, Actuator	1	1
24			Rivet (4 x 14mm)	1	2
26			Screw, Socket Button Head (M5 x .8 x 12mm)	1	2
8	D	1177613	Kit, Actuator Mounting Hardware	1	1
11			Cap, End	1	2
12			Screw, Hex Head (M10 x 1.5 x 58mm)	1	1
14			Washer (10.5 x 20 x 2mm)	1	2
15			Locknut (M10 x 1.5mm)	1	1
25			Bushing (10 x 12 x 28mm)	1	1
27			Lock, Wire	1	1
9	E	1177615	Kit, Folding Hook	1	1
30			Hook, Folder	1	1
31			Pin, Locking shaft (10 x 50mm)	1	1
32			Pin (8 x 36mm)	1	1
33			Spring, Hook	1	1
10	F	1177614	Kit, Mast Connector Hardware	1	1
14			Washer (10.5 x 20 x 2mm)	1	4
15			Locknut (M10 x 1.5mm)	1	2
28			Bearing (16 x 10 x 25mm)	1	2

Electric Lift - Mast / Boom Assembly

NOTE: Items that are not shown in this category but are included in Kits in the Parts List are used on other I-Lift Applications. All fasteners must be torqued to IFI/DIN standards.

Item Number	Note	Part Number	Description	Quantity Per	
				Package	Assembly
29			Screw, Hex Head (M10 x 1.5 x 75mm)	1	2
34			Washer (5.2 x 10 x 1mm)	1	1
35			Pin, Lock Plate (M5 x 80mm)	1	1
36			Spring (.5 x 5 x 50mm)	1	1
37			Plate, Lock	1	1
38			Ball (20mm) w/ Stud, Threaded (M6 x 1 x 13mm)	1	1
39			Rubber, Anti Scratch	1	1
40			Screw (M4 x 7mm)	1	1
<p>NOTE: A - Includes items 11 - 20, and 25. Items 13, 19, and 20 are not used on this Model and are not shown. B - Includes items 11, 14 - 15, and 29. C - Includes items 21 - 24, 26, and 41. Item 41 is not used on this Model and is not shown. D - Includes items 11 - 12, 14, 15, 25, and 27. E - Includes items 30 - 33. F - Includes items 14, 15, 28, 29, and 34 - 40. G - Part #1078273 Actuator Motor is No Longer Available and replaced with part #60126449 Actuator Motor that now includes press-fitted Bushings. Item #25 Bushing no longer required</p> <p>NOTE: Some Items that are not shown on Illustration but are included in Kits on this page are used for other I-Lift Applications. All fasteners must be torqued to IFI/DIN standards.</p>					