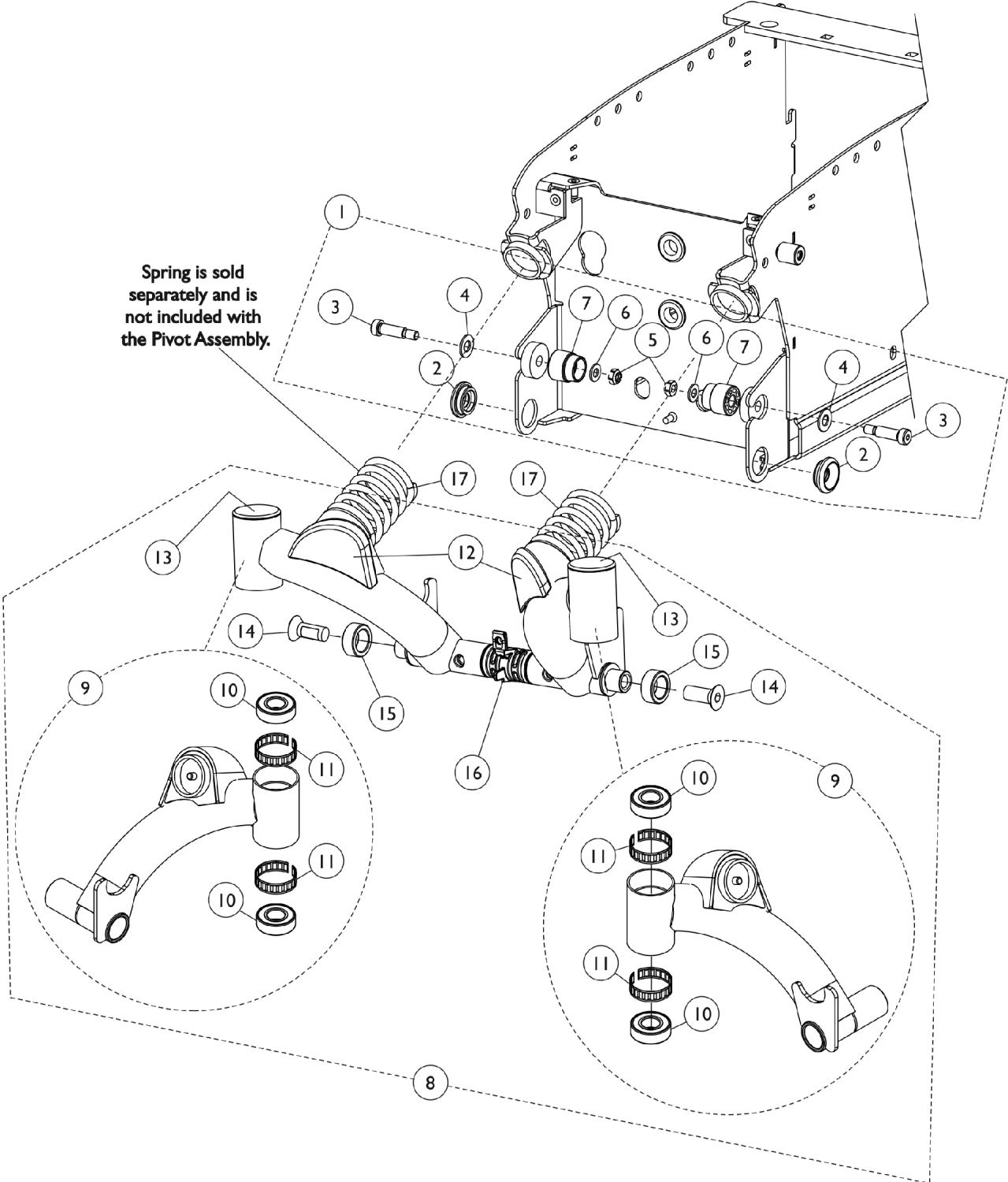


Pivot Assembly and Mounting Hardware - Rear



Pivot Assembly and Mounting Hardware - Rear

Item Number	Note	Part Number	Description	Quantity Per	
				Package	Assembly
1	A	1148028	Kit, Pivot Hardware - Rear	1	1
2			Bushing, Rear Pivot	1	2
3			NLA - Screw, Shoulder Hex Socket Head (3/8 x 1", 5/16-18)	1	2
4			Washer, Nylon (3/8 x 13/16 x 1/16")	1	2
5			Locknut (5/16-18)	1	2
6			NLA - Washer, Steel (5/16 x 5/8 x 1/16")	1	2
7			Stop, Nylon	1	2
8	C,D	8881148002	Pivot Assembly, Color - Rear (For 22NF Battery Box)	1	1
9	B	8881166116	Swing Arm Assembly w/ Hardware, Color, Rear - Right	1	1
10			Bearing (5/8")	1	2
11			Ring, Tolerance	1	2
14			Screw, Socket Flat Head w/ Patch (1/2-13 x 1-1/4")	1	1
9	B,D	8881166117	Swing Arm Assembly w/ Hardware, Color, Rear - Left	1	1
10			Bearing (5/8")	1	2
11			Ring, Tolerance	1	2
14			Screw, Socket Flat Head w/ Patch (1/2-13 x 1-1/4")	1	1
10		40117X006	Bearing (5/8")	1	2
11		1110717	Ring, Tolerance	1	2
12		1150988	Cap, Rear, Black - Right	1	1
12		1150989	Cap, Rear, Black - Left	1	1
13		1110709	Cap, Head Tube, Black	1	2
16		1144672	Center Bushing Assembly	1	1
17	D,E,G, J	1113186	Spring, Light Yellow, Non-Heavy Duty	1	2
17	D,I,J	1113187	Spring, Sunny Yellow, Heavy Duty	1	2
17	D,F,H,J	1125645-NLA	NLA - Spring, Dark Yellow, EXTRA Heavy Duty	1	2
17	D,K	1177688	Spring, Dark Silver, Non-Heavy Duty	1	2
17	D,L	1177690	Spring, Medium Silver, Heavy Duty	1	2
17	D,M	1177689	Spring, Light Silver, EXTRA Heavy Duty	1	2

NOTE: A - Includes items 2-7.
 B - Includes the Swing Arm Assembly, items 10, 11 and 14. Specify frame color when ordering.
 C - Includes items 9 and 12-16. Items 14 and 15 are not sold individually. Specify frame color when ordering.
 D - Spring is sold separately and is not included with the Pivot Assembly.
 E - Part #1113186 used on TDX SI and TDX SIV models.
 F - Part #1125645 used on TDXSI-HD, TDXSIV-HD, TDXSI-HD-S or TDXSIV-HD-S models.
 G - Spring color changed from Sunny Yellow to Light Yellow 3/22/10. It is recommended to order springs in pairs to match color and maintain equal spring tension on both sides of the wheelchair
 H - Spring color changed from Sunny Yellow to Dark Yellow 3/22/10. It is recommended to order springs in pairs to match color and maintain equal spring tension on both sides of the wheelchair
 I - Part #1113187 used on TDXSI-CG w/ CGT or OSF (Base Only), TDXSI-2, TDXSI-2-S, TDXSIV-2, TDXSIV-2-S models. It is recommended to order springs in pairs to match color and maintain equal spring tension on both sides of the wheelchair
 J - Before 6/4/12.
 K - After 6/3/12. Part #1177688 used on TDX SI and TDX SIV models. It is recommended to order springs in pairs to maintain equal spring tension on both sides of the wheelchair.
 L - After 6/3/12. Part #1177690 used on TDXSI-CG w/ CGT or OSF (Base Only), TDXSI-2, TDXSI-2-S, TDXSIV-2, TDXSIV-2-S models. It is recommended to order springs in pairs to maintain equal spring tension on both sides of the wheelchair
 M - After 6/3/12. Part #1177689 used on TDXSI-HD, TDXSIV-HD, TDXSI-HD-S or TDXSIV-HD-S models. It is recommended to order springs in pairs to maintain equal spring tension on both sides of the wheelchair