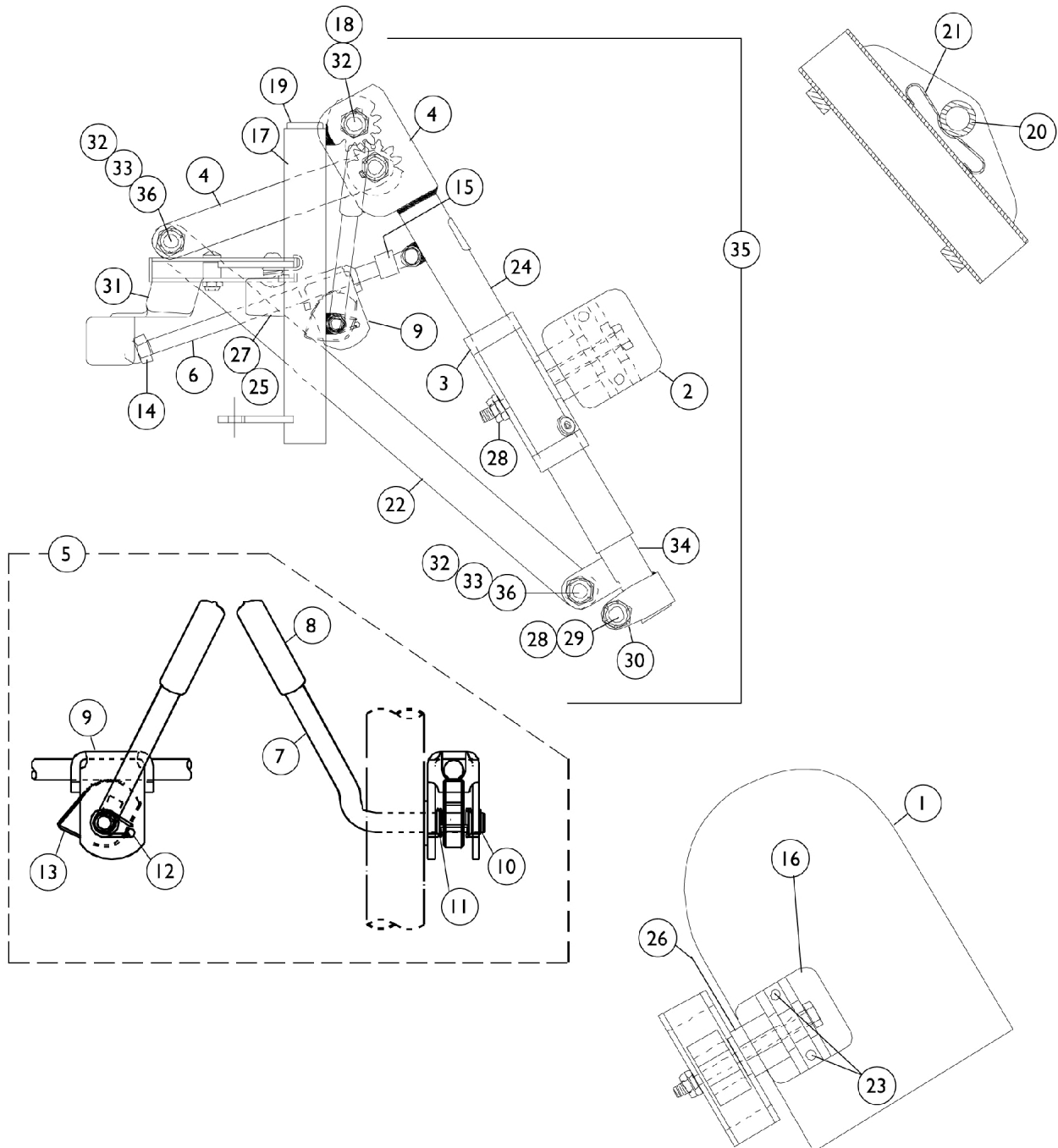


# Legrest Support Assembly

## AS4 & AL4

**NOTE: Legrest pad and attaching hardware are not included with the support assembly. See item #1.**  
**Due to a change to the Legrest Calf Pad size made on 4/23/12, you must also order the hardware kit (1066591) when ordering replacement Calf Pads.**



# Legrest Support Assembly

## AS4 & AL4

**NOTE: Legrest pad and attaching hardware are not included with the support assembly. See item #1. Due to a change to the Legrest Calf Pad size made on 4/23/12, you must also order the hardware kit (1066591) when ordering replacement Calf Pads.**

Item Number	Note	Part Number	Description	Quantity Per	
				Package	Assembly
1	A,I,N	88804529X003	Pad, Legrest, Vinyl - Right	1	1
1	A,I,N	88804529X004	Pad, Legrest, Vinyl - Left	1	1
1	A,J,K,N	8881091759	Pad w/ Cover and Screws, Legrest Vinyl (Pair)	1	1
1	A,J,L,N	8881091764	Pad, Legrest, Vinyl - Right/Left	1	1
1	A,J,N	8881091700	Pad, Legrest	1	1
1	A,J	01415X000-NLA	NLA - Cover, Legrest Pad	1	1
2		04526X019	Plate, Legrest Pad	1	1
3		1025104	Bracket, Legrest, Chrome	1	1
4		1022877-NLA	NLA - Tube, Support and Drive Link, Chrome - Right	1	1
4		1022878-NLA	NLA - Tube, Support and Drive Link, Chrome - Left	1	1
5	B,D	1046329	Kit, Elevating Legrest Ratchet Hardware (Pair)	1	1
6		42326X004	Bar, Ratchet - Right/Left	2	1
7	B	1037126	Handle, Release	1	1
8	E	1040060	Tip, Plastic, Black	1	1
8	F	1006490	Tip, Plastic, Black	1	1
9	B	04528X002	Bracket, Release, Black	1	1
10	C,E	1040831	Ring, Snap	1	1
10	C,F	40187X000-NLA	NLA - Pin, Roll (1/8" x 9/16")	1	1
11		7930310-NLA	NLA - Washer, Nylon (5/16 x 11/16 x 1/16")	1	1
12	B	1037485	Spring, Release	25	1
13	B	1037125	Cam, Legrest	1	1
14		7930336-NLA	NLA - Nut, Acorn (5/16-24)	1	1
15		47328X003	Bushing, Pivot (5/16 x 7/16 x 7/8")	1	1
16		1014807	Screw, Hex Head (5/16-24 x 3-1/4")	1	1
17		1022862	Tube, Legrest Support, Adult, Chrome - Right	1	1
17		1022863	Tube, Legrest Support, Adult, Chrome - Left	1	1
17		1022871-NLA	NLA - Legrest Support Tube Assembly, Adult, Chrome - Right	1	1
17		1022872-NLA	NLA - Legrest Support Tube Assembly, Adult, Chrome - Left	1	1
18		1022854-NLA	NLA - Screw, Shoulder Slotted Head (1/2 x 1-1/8", 3/8-16)	1	1
19	E	1027097	Plug Button, Black (3/4")	1	1
19	F	40144X001-NLA	NLA - Plug Button, Chrome (3/4")	1	1
20		47328X003	Bushing, Pivot (5/16 x 7/16 x 7/8")	1	1
21		48823X008	Spring, Leaf	1	1
22		1022846-NLA	NLA - Bar, Link, Black	1	1
23	M	1066591	Hardware, Legrest Pad	1	1
			Screw, Phillips Pan Head (#10-32 x 11/16")	1	2
			Screw, Phillips Pan Head (#10-32 x 1")	1	2
			Instruction Sheet, Legrest Pad Mtg.	1	1
24		1024911-NLA	NLA - Decal, Smartleg	1	1
25		1030979	Screw, Phillips Pan Head Tap (#10-32 x 3/4")	1	1
26		1025133	Spacer, Legrest Pad, Black	1	1

# Legrest Support Assembly

## AS4 & AL4

**NOTE: Legrest pad and attaching hardware are not included with the support assembly. See item #1. Due to a change to the Legrest Calf Pad size made on 4/23/12, you must also order the hardware kit (1066591) when ordering replacement Calf Pads.**

Item Number	Note	Part Number	Description	Quantity Per	
				Package	Assembly
27		1022874	Bumper	1	1
28		7930363-NLA	NLA - Package, Locknut (5/16"-24)	25	2
29		11232X009	Bolt, Lug (5/16-24 x 1-3/8")	1	1
30		1027377	Washer (#20)	1	1
31		1031235-NLA	NLA - Handle, Release, Chrome - Right	1	1
31		1031236-NLA	NLA - Handle, Release, Chrome - Left	1	1
32		40363X000	Hex Nut (3/8"-16)	1	3
33		1022866-NLA	NLA - Screw, Socket Button Head (3/8-16 x 3/4")	1	2
34		1022848	Tube, Slide, Articulating, Chrome - Right	1	1
35	G	1031498-NLA	NLA - Legrest Support Assembly, Articulating, Adult, Chrome - Right	1	1
35	G	1031499-NLA	NLA - Legrest Support Assembly, Articulating, Adult, Chrome - Left	1	1
36		1049527	Washer, Nylon (3/8 x 3/4 x 1/16")	1	1
	H	See Chart	Pivot Slide Tube with Aluminum Footplate	1	1

**NOTE:** A - Specify upholstery color when ordering, see Frame Finishes, Touch-Up Paints, Upholstery Options and Accent Packages page.  
 B - Due to product improvement - items 7, 9, 12 and 13 are NLA for chairs built before 6/94. Ratchet bar kit (item 5) must be ordered for those chairs.  
 C - After 5/94, the snap ring replaced the roll pin to attach the ratchet handle to the ratchet.  
 D - Includes items 6 through 15 (Pair)  
 E - After 5/94  
 F - Before 6/94  
 G - Less Legrest Pad  
 H - Not Shown  
 I - Used on AS4 only.  
 J - Used on AL4 only.  
 K - Before 9/5/00 (16-24" Wide Chairs) (Pair)  
 L - After 9/4/00 (16-24" Wide Chairs) (Single)  
 M - Item includes Screws and Instruction Sheet.  
 N - Due to a change to the Legrest Calf Pad size made on 4/23/12, you must also order the hardware kit (1066591) when ordering replacement Calf Pads.

### Pivot Slide Tube with Aluminum Footplate

Description	Size	Right	Left
Slim Narrow (Plain Aluminum Plate)	(14" - 15")	1023905-NLA See Note(s) A	1023906-NLA See Note(s) A
Adult and Narrow (Plain Aluminum Plate)	(16" - 24")	1023907 See Note(s) A	1023908 See Note(s) A

**NOTE:** A - Aluminum footplates on chairs built before 2/96 had a "Bright Aluminum" finish. Footplates after 1/96 now have a black finish. For Front Riggings before 2/96, order in pairs to match.