

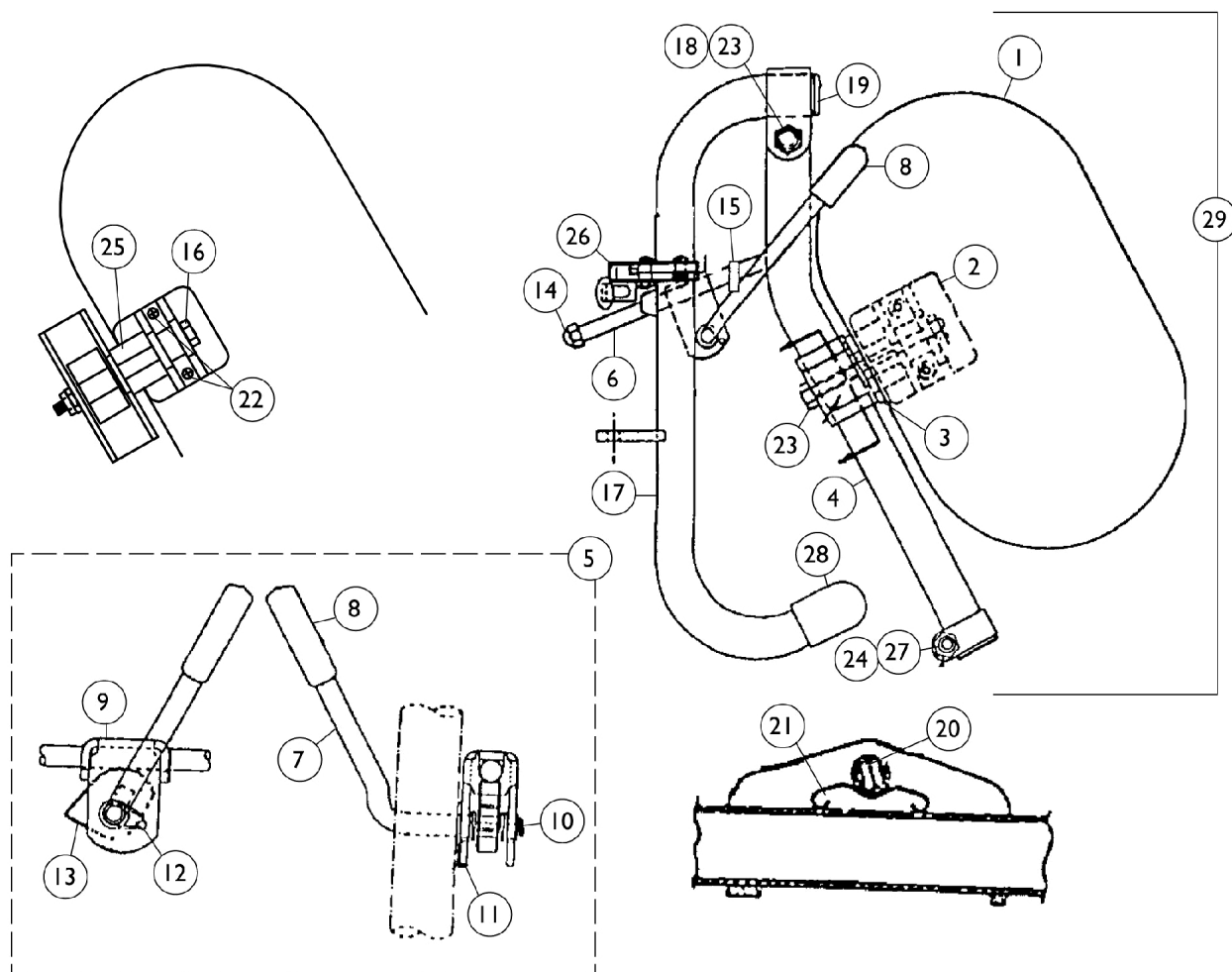
Legrest Support Assembly

96BK

(14" - 24" Wide Chairs)

Due to a change to the Legrest Calf Pad size made on 4/23/12, you must also order the hardware kit (1066591) when ordering replacement Calf Pads.

NOTE: Legrest pad and attaching hardware not included with support assembly. See item 1.



Legrest Support Assembly

96BK

(14" - 24" Wide Chairs)

Due to a change to the Legrest Calf Pad size made on 4/23/12, you must also order the hardware kit (1066591) when ordering replacement Calf Pads.

| Item Number | Note | Part Number | Description | Quantity Per | |
|-------------|-------|---------------|---|--------------|----------|
| | | | | Package | Assembly |
| 1 | A,I,P | 88804529X003 | Pad, Legrest, Vinyl - Right | 1 | 1 |
| 1 | A,I,P | 88804529X004 | Pad, Legrest, Vinyl - Left | 1 | 1 |
| 1 | A,D,P | 8881091759 | Pad w/ Cover and Screws, Legrest Vinyl (Pair) | 2 | 1 |
| 1 | A,D,P | 8881091764 | Pad, Legrest, Vinyl - Right/Left | 1 | 1 |
| 1 | J | 01446X000-NLA | NLA - Two Piece Plastic Pad | 1 | 1 |
| 1 | J | 01415X000-NLA | NLA - Cover, Legrest Pad | 1 | 1 |
| 2 | | 04526X019 | Plate, Legrest Pad | 1 | 1 |
| 3 | | 1025104 | Bracket, Legrest, Chrome | 1 | 1 |
| 4 | L | 04526X040-NLA | NLA - Tube, Elevating Support, Chrome - Right | 1 | 1 |
| 4 | L | 04526X041-NLA | NLA - Tube, Elevating Support, Chrome - Left | 1 | 1 |
| 4 | M | 1149366-NLA | NLA - Tube, Elevating Support, Silver Vein - Right | 1 | 1 |
| 4 | M | 1149367-NLA | NLA - Tube, Elevating Support, Silver Vein - Left | 1 | 1 |
| 5 | B,F | 1046328-NLA | NLA - Kit, Ratchet | 2 | 1 |
| 6 | | 42326X001 | Bar, Ratchet | 1 | 1 |
| 7 | B | 1037126 | Handle, Release | 1 | 1 |
| 8 | G | 1040060 | Tip, Plastic, Black | 1 | 1 |
| 8 | H | 1006490 | Tip, Plastic, Black | 1 | 1 |
| 9 | B | 04528X002 | Bracket, Release, Black | 1 | 1 |
| 10 | C,G | 1040831 | Ring, Snap | 1 | 1 |
| 10 | C,H | 40187X000-NLA | NLA - Pin, Roll (1/8" x 9/16") | 1 | 1 |
| 11 | | 7930310-NLA | NLA - Washer, Nylon (5/16 x 11/16 x 1/16") | 25 | 1 |
| 12 | B | 1037485 | Spring, Release | 1 | 1 |
| 13 | B | 1037125 | Cam, Legrest | 1 | 1 |
| 14 | | 7930336-NLA | NLA - Nut, Acorn (5/16-24) | 25 | 1 |
| 15 | | 47330X003 | Spacer (5/16 x 1/2 x 3/8") | 1 | 1 |
| 16 | | 1014807 | Screw, Hex Head (5/16-24 x 3-1/4") | 1 | 1 |
| 17 | N | 1031475-NLA | NLA - Legrest Support Tube Assembly, Adult, Silver Vein - Right | 1 | 1 |
| 17 | N | 1031476-NLA | NLA - Legrest Support Tube Assembly, Adult, Silver Vein - Left | 1 | 1 |
| 18 | | 11919X000-NLA | NLA - Screw, Slotted Truss Head (3/8-16 x 1-1/2") | 1 | 1 |
| 19 | | 1027095 | Plug Button, Black (7/8") | 1 | 1 |
| 20 | | 47328X003 | Bushing, Pivot (5/16 x 7/16 x 7/8") | 1 | 1 |
| 21 | | 48823X008 | Spring, Leaf | 1 | 1 |
| 22 | O | 1066591 | Hardware, Legrest Pad | 1 | 1 |
| | | | Screw, Phillips Pan Head (#10-32 x 11/16") | 1 | 2 |
| | | | Screw, Phillips Pan Head (#10-32 x 1") | 1 | 2 |
| | | | Instruction Sheet, Legrest Pad Mtg. | 1 | 1 |
| 23 | | 7930363-NLA | NLA - Package, Locknut (5/16"-24) | 25 | 2 |
| 24 | | 11232X009 | Bolt, Lug (5/16-24 x 1-3/8") | 1 | 1 |
| 25 | | 1025133 | Spacer, Legrest Pad, Black | 1 | 1 |
| 26 | | 1035539 | Handle, Release, Black - Right | 1 | 1 |

Legrest Support Assembly

96BK

(14" - 24" Wide Chairs)

Due to a change to the Legrest Calf Pad size made on 4/23/12, you must also order the hardware kit (1066591) when ordering replacement Calf Pads.

| Item Number | Note | Part Number | Description | Quantity Per | |
|---|------|-------------|--|--------------|----------|
| | | | | Package | Assembly |
| 26 | | 1035540 | Handle, Release, Black - Left | 1 | 1 |
| 27 | | 40363X000 | Hex Nut (3/8"-16) | 1 | 1 |
| 28 | | 1016346 | Cap, End, Tube, Black (7/8") | 1 | 1 |
| 29 | N | 1031713-NLA | NLA - Legrest Support Assembly, Adult, Silver Vein - Right | 1 | 1 |
| 29 | N | 1031714-NLA | NLA - Legrest Support Assembly, Adult, Silver Vein - Left | 1 | 1 |
| | K | See Chart | Pivot Slide Tubes with Aluminum Footplates | 1 | 1 |
| NOTE: A - Specify upholstery color when ordering, see Frame Finishes, Touch-Up Paints, Upholstery Options and Accent Packages page. B - Due to product improvement - items 7, 9, 12 and 13 are NLA for chairs built before 6/94. Ratchet bar kit (item 5) must be ordered for those chairs. C - After 5/94, the snap ring replaced the roll pin to attach the ratchet handle to the ratchet. D - Before 9/5/00 (16-24" Wide) (Pair) F - Includes items 6-15 (Pair) G - After 5/94 H - Before 6/94 I - 14-15" Wide J - 16-24" K - Not Shown L - Before 7/6/07 M - After 7/5/08 N - After 7/5/07 Color changed from chrome to silver vein. It is recommended to order in pairs to match O - Item includes Screws and Instruction Sheet. P - Due to a change to the Legrest Calf Pad size made on 4/23/12, you must also order the hardware kit (1066591) when ordering replacement Calf Pads. | | | | | |

Pivot Slide Tubes with Aluminum Footplates

| Description | Size | Right | Left |
|---|-------------|------------------------------|------------------------------|
| Adult and Narrow Adult and Large Adult (Rubber Edged Plate) | (16" - 24") | 1031216-NLA See Note(s) A | 1031217-NLA See Note(s) A |
| Slim Narrow (Plain Aluminum Plate) | (14" - 15") | 1030912-NLA See Note(s) B | 1030913-NLA See Note(s) B |
| Extra Large (Black Aluminum Plate) | (16" - 24") | 1031934-NLA | 1031935-NLA |
| NOTE: A - Front Riggings built before 12/93 had footplates with a black finish. After 11/93 the finish is "Wrinkle Black." For Front Riggings before 12/93, order in pairs to match. B - Aluminum footplates on chairs built before 2/96 had a "Bright Aluminum" finish. Footplates after 1/96 now have a black finish. For Front Riggings before 2/96, order in pairs to match. | | | |