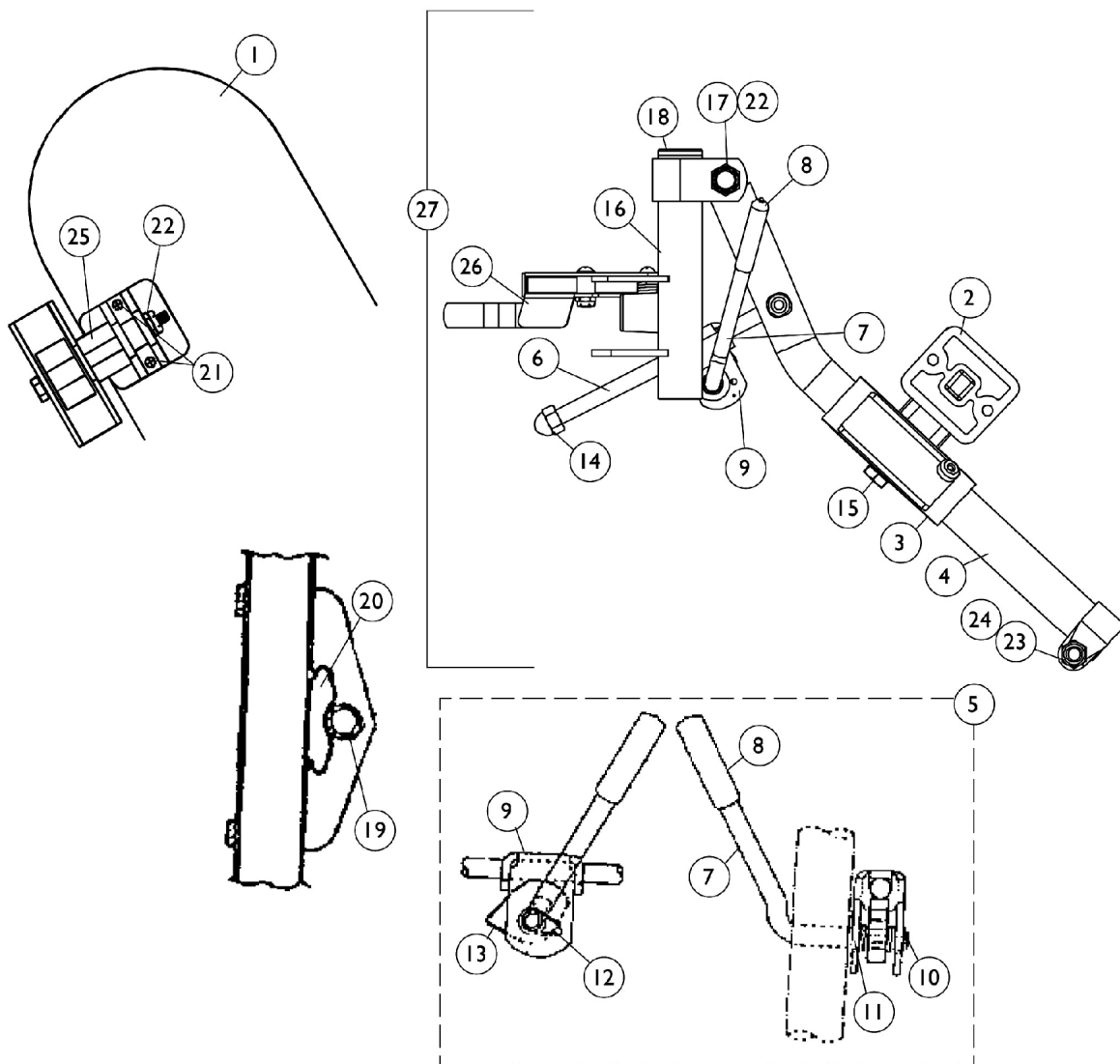


# Legrest Support Assembly

## H94BK (14" - 24" Wide Chairs)

Due to a change to the Legrest Calf Pad size made on 4/23/12, you must also order the hardware kit (1066591) when ordering replacement Calf Pads.

**NOTE:** Legrest pad and attaching hardware not included with support assembly. See item 1.



# Legrest Support Assembly

## H94BK (14" - 24" Wide Chairs)

Due to a change to the Legrest Calf Pad size made on 4/23/12, you must also order the hardware kit (1066591) when ordering replacement Calf Pads.

Item Number	Note	Part Number	Description	Quantity Per	
				Package	Assembly
1	A,I,P	88804529X003	Pad, Legrest, Vinyl - Right	1	1
1	A,I,P	88804529X004	Pad, Legrest, Vinyl - Left	1	1
1	A,E,P	8881091764	Pad, Legrest, Vinyl - Right/Left	1	1
1	A,D,P	8881091759	Pad w/ Cover and Screws, Legrest Vinyl (Pair)	2	1
1	J	01446X000-NLA	NLA - Two Piece Plastic Pad	1	1
1	J	01415X000-NLA	NLA - Cover, Legrest Pad	1	1
2		04526X019	Plate, Legrest Pad	1	1
3		1025104	Bracket, Legrest, Chrome	1	1
4	L	04526X040-NLA	NLA - Tube, Elevating Support, Chrome - Right	1	1
4	L	04526X041-NLA	NLA - Tube, Elevating Support, Chrome - Left	1	1
4	M	1149366-NLA	NLA - Tube, Elevating Support, Silver Vein - Right	1	1
4	M	1149367-NLA	NLA - Tube, Elevating Support, Silver Vein - Left	1	1
5	B,F	1046328-NLA	NLA - Kit, Ratchet	2	1
6		42326X001	Bar, Ratchet	1	1
7	B	1037126	Handle, Release	1	1
8	G	1040060	Tip, Plastic, Black	1	1
8	H	1006490	Tip, Plastic, Black	1	1
9	B	04528X002	Bracket, Release, Black	1	1
10	C,G	1040831	Ring, Snap	1	1
10	C,H	40187X000-NLA	NLA - Pin, Roll (1/8" x 9/16")	1	1
11		7930310-NLA	NLA - Washer, Nylon (5/16 x 11/16 x 1/16")	25	1
12	B	1037485	Spring, Release	1	1
13	B	1037125	Cam, Legrest	1	1
14		7930336-NLA	NLA - Nut, Acorn (5/16-24)	25	1
15		1014807	Screw, Hex Head (5/16-24 x 3-1/4")	1	1
16	N	1031210-NLA	NLA - Legrest Support Assembly, Silver Vein - Right	1	1
16	N	1031211-NLA	NLA - Legrest Support Assembly, Silver Vein - Left	1	1
17		1030948	Screw, Slotted Truss Head (5/16-24 x 1-1/2")	1	1
18		1027095	Plug Button, Black (7/8")	1	1
19		47328X003	Bushing, Pivot (5/16 x 7/16 x 7/8")	1	1
20		48823X008	Spring, Leaf	1	1
21	O	1066591	Hardware, Legrest Pad	1	1
			Screw, Phillips Pan Head (#10-32 x 11/16")	1	2
			Screw, Phillips Pan Head (#10-32 x 1")	1	2
			Instruction Sheet, Legrest Pad Mtg.	1	1
22		7930363-NLA	NLA - Package, Locknut (5/16"-24)	25	2
23		11232X009	Bolt, Lug (5/16-24 x 1-3/8")	1	1
24		1107321	Nut, Low Cap (5/16"-24)	1	1
25		1025133	Spacer, Legrest Pad, Black	1	1
26		1035539	Handle, Release, Black - Right	1	1
26		1035540	Handle, Release, Black - Left	1	1
27	N	1042874-NLA	NLA - Legrest Support Assembly, Hemi, Silver Vein - Right	1	1

# Legrest Support Assembly

## H94BK (14" - 24" Wide Chairs)

**Due to a change to the Legrest Calf Pad size made on 4/23/12, you must also order the hardware kit (1066591) when ordering replacement Calf Pads.**

Item Number	Note	Part Number	Description	Quantity Per	
				Package	Assembly
27	N	1042875-NLA	NLA - Legrest Support Assembly, Hemi, Silver Vein - Left	1	1
	K	See Chart	Pivot Slide Tubes with Aluminum Footplates	1	1
NOTE: A - Specify upholstery color when ordering, see Frame Finishes, Touch-Up Paints, Upholstery Options and Accent Packages page. B - Due to product improvement - items 7, 9, 12 and 13 are NLA for chairs built before 6/94. Ratchet bar kit (item 5) must be ordered for those chairs. C - After 5/94, the snap ring replaced the roll pin to attach the ratchet handle to the ratchet. D - Before 9/5/00 (16-24" Wide) (Pair) E - After 9/4/00 (16-24" Wide) (Single) F - Includes items 6-14 (Pair) G - After 5/94 H - Before 6/94 I - 14-15" Wide J - 16-24" K - Not Shown L - Before 7/6/07 M - After 7/5/07 N - After 7/5/07 Color changed from chrome to silver vein. It is recommended to order in pairs to match O - Item includes Screws and Instruction Sheet. P - Due to a change to the Legrest Calf Pad size made on 4/23/12, you must also order the hardware kit (1066591) when ordering replacement Calf Pads.					

## Pivot Slide Tubes with Aluminum Footplates

Description	Size	Right	Left
Adult and Narrow Adult and Large Adult (Rubber Edged Plate)	(16" - 24")	1031216-NLA See Note(s) A	1031217-NLA See Note(s) A
Slim Narrow (Plain Aluminum Plate)	(14" - 15")	1030912-NLA See Note(s) B	1030913-NLA See Note(s) B
Extra Large (Black Aluminum Plate)	(16" - 24")	1031934-NLA	1031935-NLA
NOTE: A - Front Riggings built before 12/93 had footplates with a flat black finish. After 11/93 the finish is "Wrinkle Black." For Front Riggings before 12/93, order in pairs to match. B - Aluminum footplates on chairs built before 2/96 had a "Bright Aluminum" finish. Footplates after 1/96 now have a black finish. For Front Riggings before 2/96, order in pairs to match.			