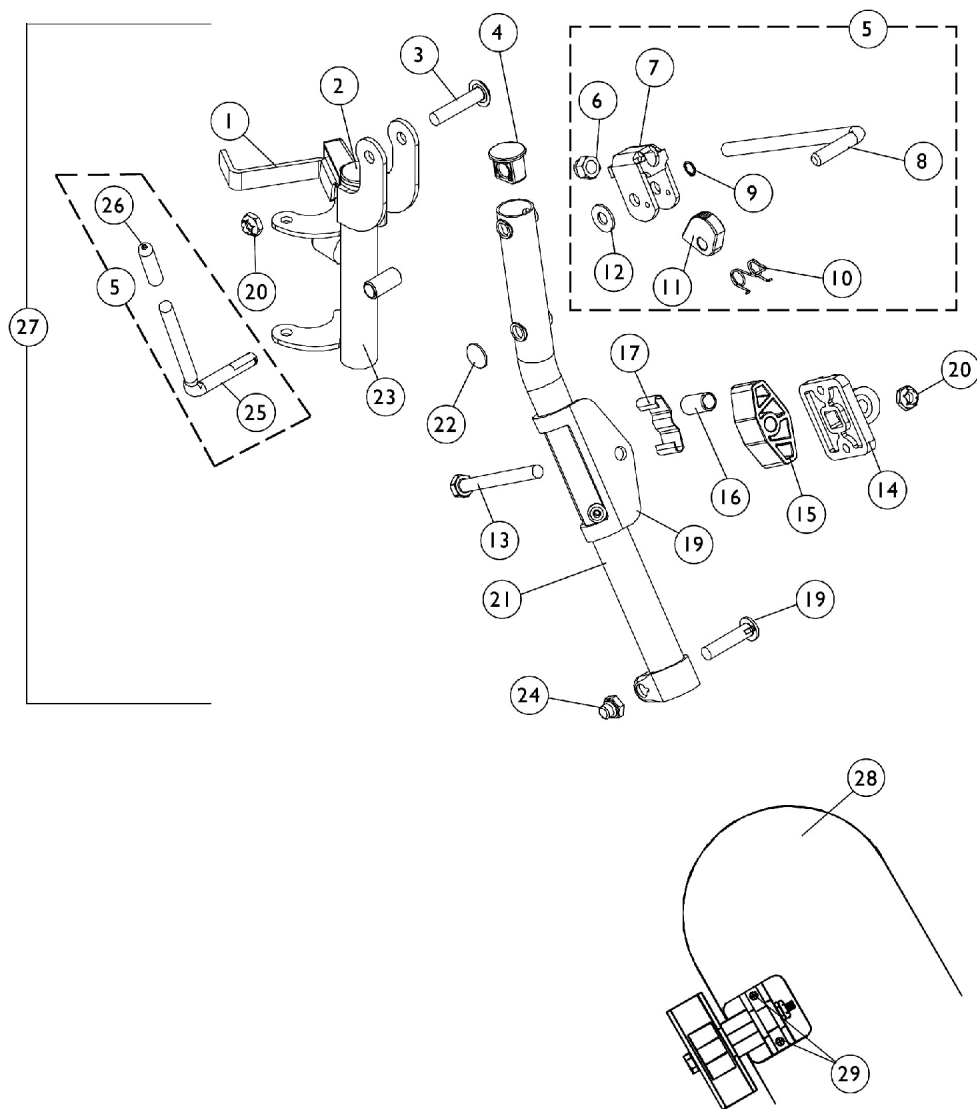


Legrest Support Assembly

94BK

Due to a change to the Legrest Calf Pad size made on 4/23/12, you must also order the hardware kit (1066591) when ordering replacement Calf Pads.

NOTE: Legrest pad and attaching hardware not included with support assembly. See item 28.



Legrest Support Assembly

94BK

Due to a change to the Legrest Calf Pad size made on 4/23/12, you must also order the hardware kit (1066591) when ordering replacement Calf Pads.

(14" - 24" Wide Chairs)

Item Number	Note	Part Number	Description	Quantity Per	
				Package	Assembly
1		1035539	Handle, Release, Black - Right	1	1
1		1035540	Handle, Release, Black - Left	1	1
2		1027095	Plug Button, Black (7/8")	1	1
3		1030948	Screw, Slotted Truss Head (5/16-24 x 1-1/2")	1	1
4		1095433	Plug Button, Black (7/8")	1	1
5	A,C	1046328-NLA	NLA - Kit, Ratchet	2	1
6		7930336-NLA	NLA - Nut, Acorn (5/16-24)	25	1
7	A	04528X002	Bracket, Release, Black	1	1
8		42326X001	Bar, Ratchet	1	1
9	B,D	1040831	Ring, Snap	1	1
9	B,E	40187X000-NLA	NLA - Pin, Roll (1/8" x 9/16")	1	1
10	A	1037485	Spring, Release	1	1
11	A	1037125	Cam, Legrest	1	1
12		7930310-NLA	NLA - Washer, Nylon (5/16 x 11/16 x 1/16")	25	1
13		1014807	Screw, Hex Head (5/16-24 x 3-1/4")	1	1
14		04526X019	Plate, Legrest Pad	1	1
15		1091220	Spacer, Legrest	1	1
16		47328X003	Bushing, Pivot (5/16 x 7/16 x 7/8")	1	1
17		48823X008	Spring, Leaf	1	1
18		1025104	Bracket, Legrest, Chrome	1	1
19		11232X009	Bolt, Lug (5/16-24 x 1-3/8")	1	1
20		7930363-NLA	NLA - Package, Locknut (5/16"-24)	25	2
21	M	1031358-NLA	NLA - Tube, Support, Legrest, Elevating, Chrome - Right	1	1
21	M	1031359-NLA	NLA - Tube, Support, Legrest, Elevating, Chrome - Left	1	1
21	N	1149473-NLA	NLA - Tube, Support, Legrest, Elevating, Silver Vein - Right	1	1
21	N	1149474-NLA	NLA - Tube, Support, Legrest, Elevating, Silver Vein - Left	1	1
22		1096773	Nut, Push Dome (5/16")	1	1
23		1031581-NLA	NLA - Legrest Support Tube Assembly, Adult, Black - Right	1	1
23		1031582	Legrest Support Tube Assembly, Adult, Black - Left	1	1
24		1107321	Nut, Low Cap (5/16"-24)	1	1
25	A	1037126	Handle, Release	1	1
26	D	1040060	Tip, Plastic, Black	1	1
26	E	1006490	Tip, Plastic, Black	1	1
27	K,O	1031579-NLA	NLA - Legrest Support Assembly, Adult, Silver Vein - Right	1	1
27	K,O	1031580-NLA	NLA - Legrest Support Assembly, Adult, Chrome - Left	1	1
28	H,I,Q	88804529X003	Pad, Legrest, Vinyl - Right	1	1
28	H,I,Q	88804529X004	Pad, Legrest, Vinyl - Left	1	1

Legrest Support Assembly

94BK

Due to a change to the Legrest Calf Pad size made on 4/23/12, you must also order the hardware kit (1066591) when ordering replacement Calf Pads.

Item Number	Note	Part Number	Description	Quantity Per	
				Package	Assembly
28	F,H,Q	8881091759	Pad w/ Cover and Screws, Legrest Vinyl (Pair)	2	1
28	G,H,Q	8881091764	Pad, Legrest, Vinyl - Right/Left	1	1
28	J,Q	01446X000-NLA	NLA - Two Piece Plastic Pad	1	1
28	J	01415X000-NLA	NLA - Cover, Legrest Pad	1	1
29	P	1066591	Hardware, Legrest Pad	1	1
			Screw, Phillips Pan Head (#10-32 x 11/16")	1	2
			Screw, Phillips Pan Head (#10-32 x 1")	1	2
			Instruction Sheet, Legrest Pad Mtg.	1	1
	L	See Chart	Pivot Slide Tubes with Aluminum Footplates	1	1
NOTE: A - Due to product improvement - items 7, 10, 11 and 25 are no longer available for chairs built before 6/94. Ratchet bar kit (item 5) must be ordered for these chairs. B - After 5/94, the snap ring replaced the roll pin to attach the ratchet handle to the ratchet. C - Includes items 6-12 and 26 (Pair) D - After 5/94 E - Before 6/94 F - Before 9/5/00 (16-24" Wide) (Pair) G - After 9/4/00 (16-24" Wide) (Single) H - Specify upholstery color when ordering, see Frame Finishes, Touch-Up Paints, Upholstery Options and Accent Packages page. I - 14-15" Wide J - 16-24" K - Less Legrest Pad L - Not Shown M - Before 7/6/07 N - After 7/5/07 O - After 7/5/07 Color changed from chrome to silver vein. It is recommended to order in pairs to match P - Item includes Screws and Instruction Sheet. Q - Due to a change to the Legrest Calf Pad size made on 4/23/12, you must also order the hardware kit (1066591) when ordering replacement Calf Pads.					

Pivot Slide Tubes with Aluminum Footplates

Description	Size	Right	Left
Adult and Narrow Adult and Large Adult (Rubber Edged Plate)	(16" - 24")	1031216-NLA See Note(s) A	1031217-NLA See Note(s) A
Slim Narrow (Plain Aluminum Plate)	(14" - 15")	1030912-NLA See Note(s) B	1030913-NLA See Note(s) B
Extra Large (Black Aluminum Plate)	(16" - 24")	1031934-NLA	1031935-NLA
NOTE: A - Front Riggings built before 12/93 had footplates with a flat black finish. After 11/93 the finish is "Wrinkle Black." For Front Riggings before 12/93, order in pairs to match. B - Aluminum Footplates on chairs built before 2/96 had a "Bright Aluminum" finish. Footplates after 1/96 now have a black finish. For Front Riggings before 2/96, order in pairs to match.			