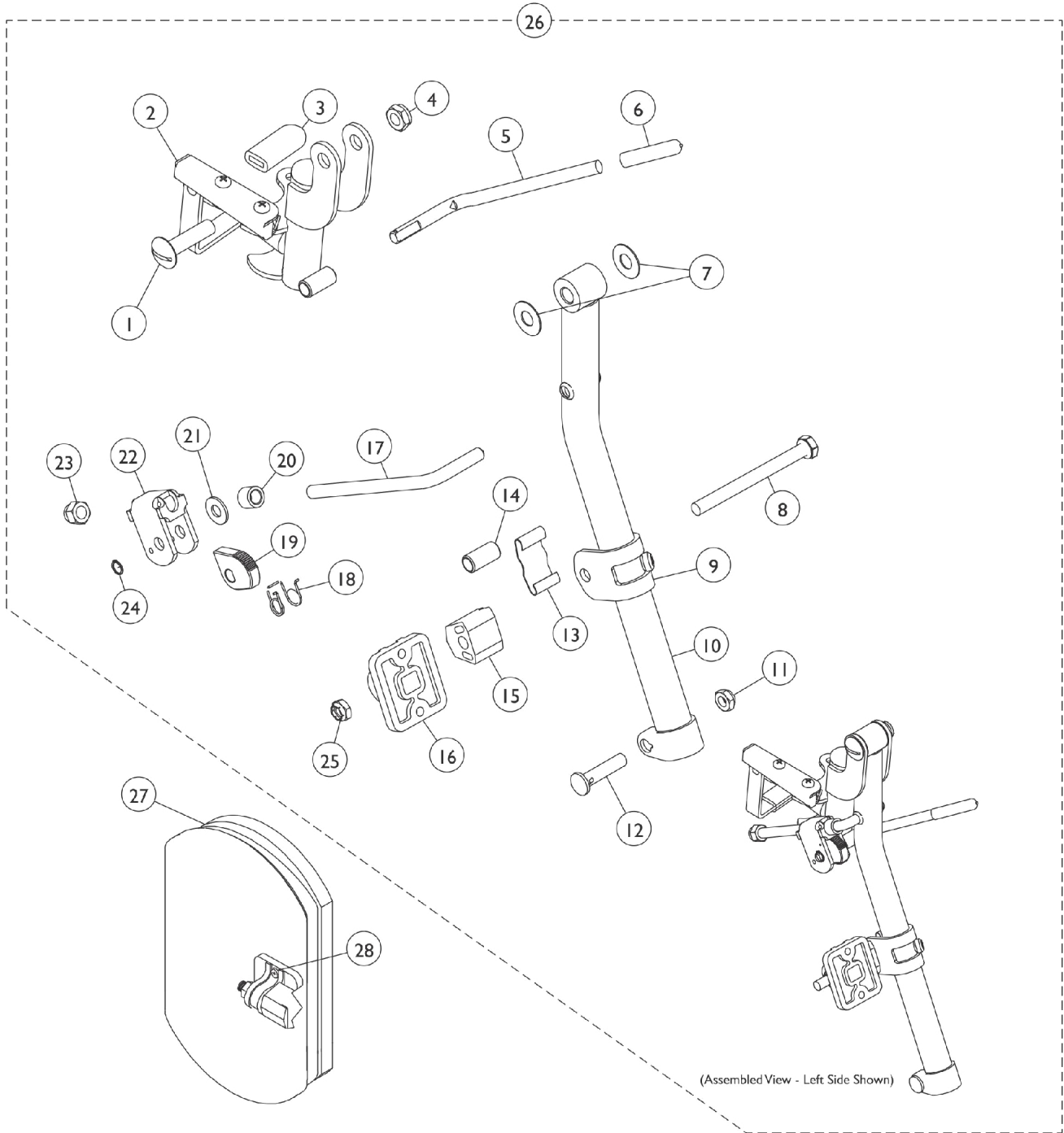


Legrest Support Assembly - PH904A (Pin Style)

Legrest Support does not include Legrest Pad. Due to a change to the Legrest Calf Pad size made on 4/23/12, you must also order the hardware kit (1068649) when ordering replacement Calf Pads.



Legrest Support Assembly - PH904A (Pin Style)

Legrest Support does not include Legrest Pad. Due to a change to the Legrest Calf Pad size made on 4/23/12, you must also order the hardware kit (1068649) when ordering replacement Calf Pads.

Item Number	Note	Part Number	Description	Quantity Per	
				Package	Assembly
1		11919X000-NLA	NLA - Screw, Slotted Truss Head (3/8-16 x 1-1/2")	1	1
2		1114753	Legrest Support Assembly, Black - Right	1	1
2		1114754	Legrest Support Assembly, Black - Left	1	1
3		1006490	Tip, Plastic, Black	1	1
4		40363X000	Hex Nut (3/8"-16)	1	1
5		1037126	Handle, Release	1	1
6		1040060	Tip, Plastic, Black	1	1
7		1058636-NLA	NLA - Washer, Nylon (25/64 x 7/8 x 1/32")	1	2
8		1014807	Screw, Hex Head (5/16-24 x 3-1/4")	1	1
9		1110207	Bracket, Calf Pad Mounting, Black	1	1
10	E	8881048851	Tube, Elevating Adjustable Support, Color - Right	1	1
10	E	8881048852	Tube, Elevating Adjustable Support, Color - Left	1	1
11		1107321	Nut, Low Cap (5/16"-24)	1	1
12		1026030	Bolt, Lug (5/16-24 x 1-3/8")	1	1
13		48823X008	Spring, Leaf	1	1
14		47328X003	Bushing, Pivot (5/16 x 7/16 x 7/8")	1	1
15		1025133	Spacer, Legrest Pad, Black	1	1
16		04526X019	Plate, Legrest Pad	1	1
17		1113030	Bar, Ratchet	1	1
18		1037485	Spring, Release	1	1
19		1037125	Cam, Legrest	1	1
20		47330X003	Spacer (5/16 x 1/2 x 3/8")	1	1
21		1013519	Washer, Nylon (5/16 x 11/16 x 1/16")	1	1
22		04528X002	Bracket, Release, Black	1	1
23		10261X000	Nut, Acorn (5/16-24)	1	1
24		1040831	Ring, Snap	1	1
25		1025730	Locknut (5/16-24)	1	1
26	A,E	8881114757	Legrest Support Assembly, Hemi, Color - Right	1	1
26	A,E	8881114758	Legrest Support Assembly, Hemi, Color - Left	1	1
27	B,D,G	88804529X003	Pad, Legrest, Vinyl - Right	1	1
27	B,D,G	88804529X004	Pad, Legrest, Vinyl - Left	1	1
27	C,D,G	8881091764	Pad, Legrest, Vinyl - Right/Left	1	1
28	F	1068649	Hardware, Legrest Pad	1	1
			Screw, Phillips Pan Head (#10-32 x 11/16")	1	2
			Screw, Phillips Pan Head (#10-32 x 1")	1	2
			Instruction Sheet, Legrest Pad Mtg.	1	1

NOTE: A - Includes items 1-25.
 B - 14-15" Wide Chairs
 C - 16-22" Wide Chairs
 D - Specify U67 Black upholstery color when ordering.
 E - Specify 34P Flat Black Frame Finish When Ordering.
 F - Includes Screws and Instruction Sheet.
 G - Due to a change to the Legrest Calf Pad size made on 4/23/12, you must also order the hardware kit (1068649) when ordering replacement Calf Pads.