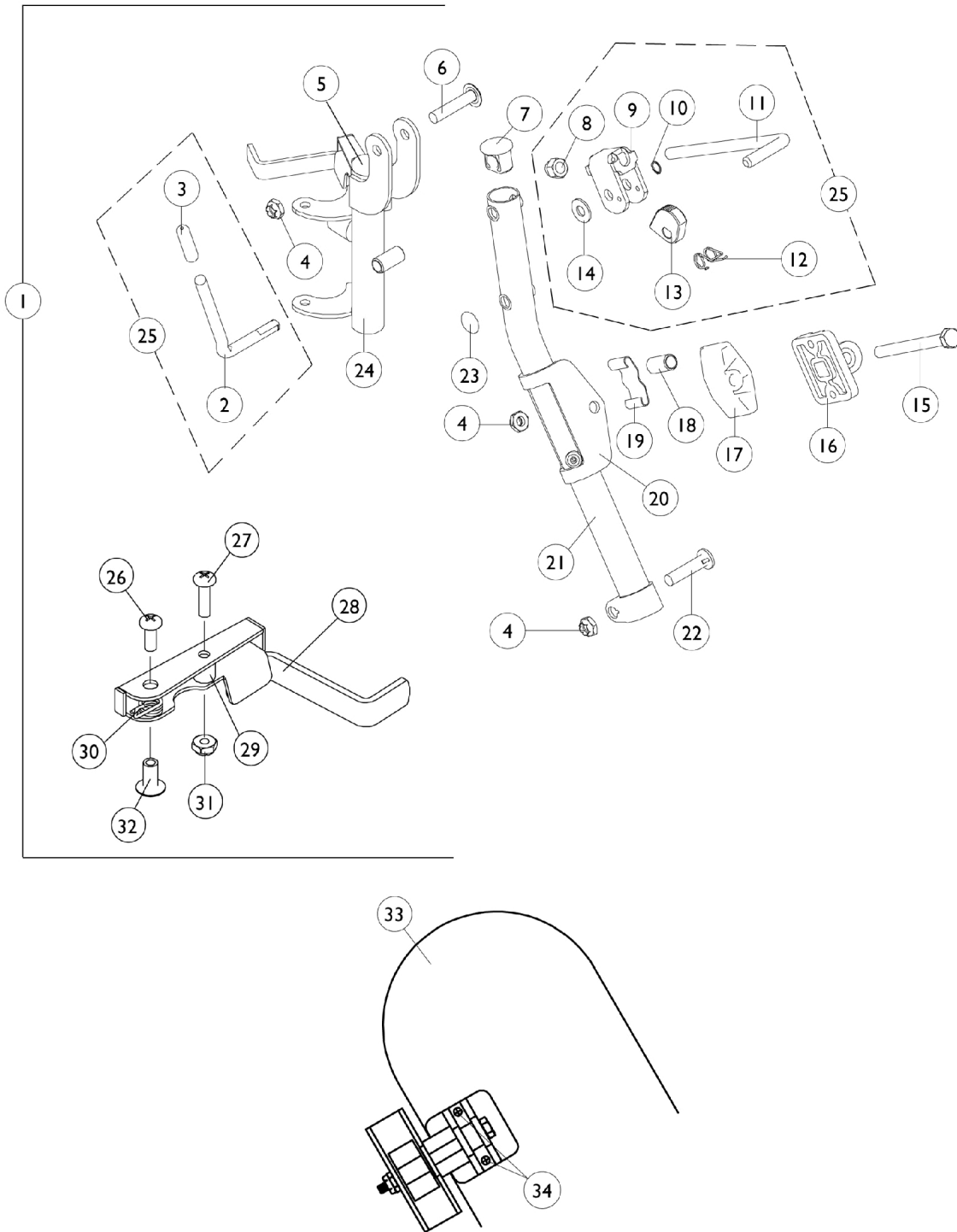


P904/T934A Legrest and Hardware

Due to a change to the Legrest Calf Pad size made on 4/23/12, you must also order the hardware kit (1066591) when ordering replacement Calf Pads.



P904/T934A Legrest and Hardware

Due to a change to the Legrest Calf Pad size made on 4/23/12, you must also order the hardware kit (1066591) when ordering replacement Calf Pads.

Item Number	Note	Part Number	Description	Quantity Per	
				Package	Assembly
1	C,I	1031579-NLA	NLA - Legrest Support Assembly, Adult, Silver Vein - Right	1	1
1	C,I	1031580-NLA	NLA - Legrest Support Assembly, Adult, Chrome - Left	1	1
2		1037126	Handle, Release	1	1
3		1040060	Tip, Plastic, Black	1	1
4		7930363-NLA	NLA - Package, Locknut (5/16"-24)	25	3
5		1027095	Plug Button, Black (7/8")	1	1
6		1030948	Screw, Slotted Truss Head (5/16-24 x 1-1/2")	1	1
7		1095433	Plug Button, Black (7/8")	1	1
8		7930336-NLA	NLA - Nut, Acorn (5/16-24)	25	1
9		04528X002	Bracket, Release, Black	1	1
10		1040831	Ring, Snap	1	1
11		42326X001	Bar, Ratchet	1	1
12		1037485	Spring, Release	1	1
13		1037125	Cam, Legrest	1	1
14		7930310-NLA	NLA - Washer, Nylon (5/16 x 11/16 x 1/16")	25	1
15		1014807	Screw, Hex Head (5/16-24 x 3-1/4")	1	1
16		04526X019	Plate, Legrest Pad	1	1
17		1091220	Spacer, Legrest	1	1
18		47328X003	Bushing, Pivot (5/16 x 7/16 x 7/8")	1	1
19		48823X008	Spring, Leaf	1	1
20		1025104	Bracket, Legrest, Chrome	1	1
21	A,G	1031358-NLA	NLA - Tube, Support, Legrest, Elevating, Chrome - Right	1	1
21	A,G	1031359-NLA	NLA - Tube, Support, Legrest, Elevating, Chrome - Left	1	1
21	H	1149473-NLA	NLA - Tube, Support, Legrest, Elevating, Silver Vein - Right	1	1
21	H	1149474-NLA	NLA - Tube, Support, Legrest, Elevating, Silver Vein - Left	1	1
22		11232X009	Bolt, Lug (5/16-24 x 1-3/8")	1	1
23		1096773	Nut, Push Dome (5/16")	1	1
24		1031581-NLA	NLA - Legrest Support Tube Assembly, Adult, Black - Right	1	1
24		1031582	Legrest Support Tube Assembly, Adult, Black - Left	1	1
25	D	1046328-NLA	NLA - Kit, Ratchet	2	1
26		1025716	Screw, Phillips Pan Head (#10-32 x 11/16")	1	2
27		1026114	Screw, Phillips Pan Head (#10-32 x 1/2")	1	1
28		1035539	Handle, Release, Black - Right	1	1
28		1035540	Handle, Release, Black - Left	1	1
29		47565X057	Bushing (7/32 x 3/8 x 11/32")	1	1
30		1028707	Spring, Release - Right	1	1
30		1028708	Spring, Release - Left	1	1
31		1025735	Locknut (#10-32)	1	1
32		1028846-NLA	NLA - Rivnut (#10-32)	1	1
33	B,E,K	1091767-NLA	NLA - Pad with Screws, Legrest (Pair)	2	1

P904/T934A Legrest and Hardware

Due to a change to the Legrest Calf Pad size made on 4/23/12, you must also order the hardware kit (1066591) when ordering replacement Calf Pads.

Item Number	Note	Part Number	Description	Quantity Per	
				Package	Assembly
33	B,F,K	8881091764	Pad, Legrest, Vinyl - Right/Left	1	1
34	J	1066591	Hardware, Legrest Pad	1	1
			Screw, Phillips Pan Head (#10-32 x 11/16")	1	2
			Screw, Phillips Pan Head (#10-32 x 1")	1	2
			Instruction Sheet, Legrest Pad Mtg.	1	1
NOTE: A - Due to product improvement, item #5 must also be ordered. B - Specify U67 Black vinyl upholstery when ordering. C - Includes items 2-24 D - Includes items 2, 3 and 8-14 E - Before 9/5/00 F - After 9/4/00 G - Before 7/6/07 H - After 7/5/07 I - After 7/5/07 Color changed from chrome to silver vein. It is recommended to order in pairs to match J - Includes Screws and Instruction Sheet. K - Due to a change to the Legrest Calf Pad size made on 4/23/12, you must also order the hardware kit (1066591) when ordering replacement Calf Pads.					