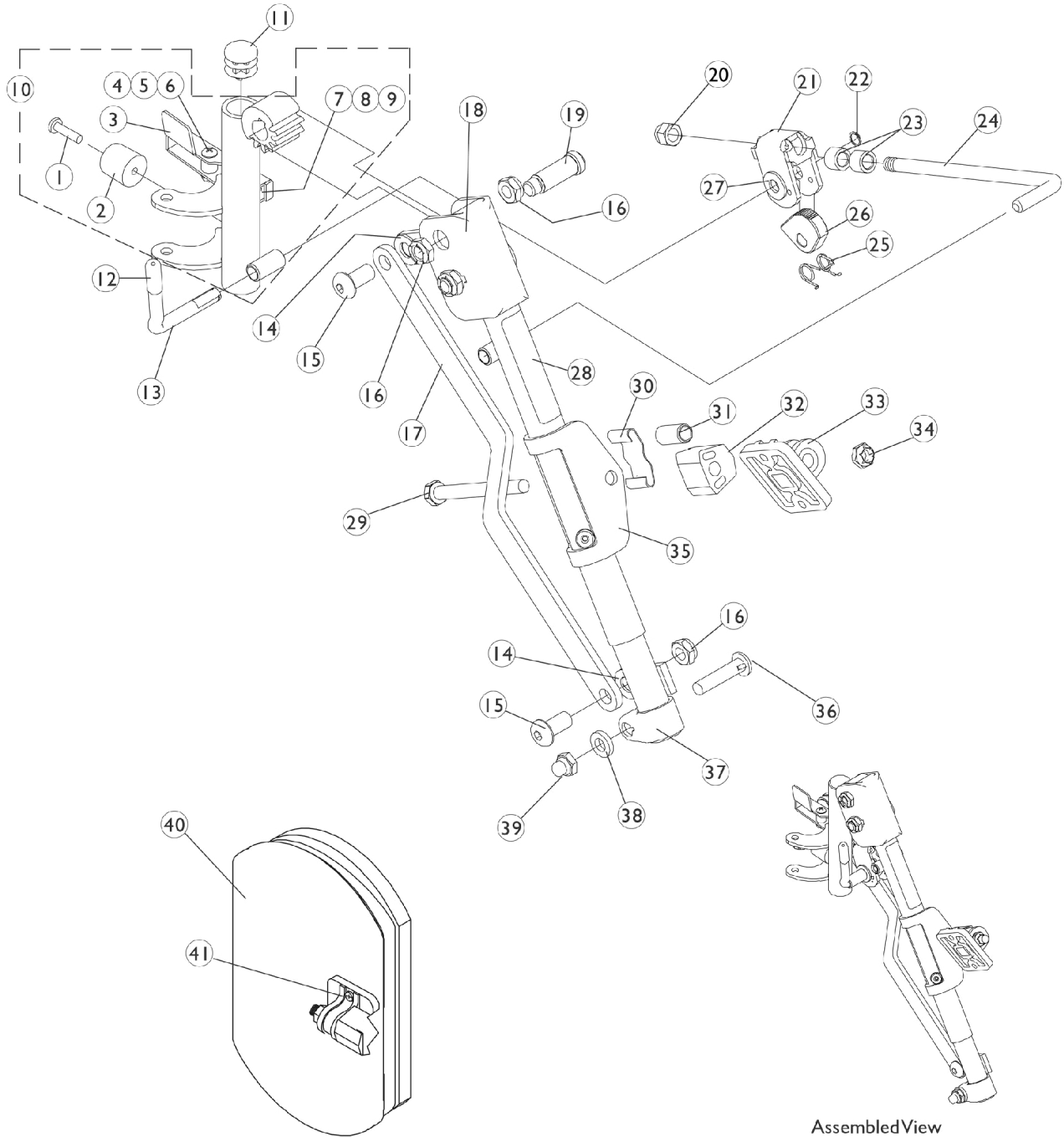


# PHAL4A (Hemi) Articulating Legrest Supports

## 9/1/02-1/5/03 Chrome

Note: Front (hemi) rigging attachment kit (1114997) must be present when using legrest.  
Due to a change to the Legrest Calf Pad size made on 4/23/12, you must also order the hardware kit (1068649) when ordering replacement Calf Pads.



Assembled View  
Right Side Shown

# PHAL4A (Hemi) Articulating Legrest Supports

## 9/1/02-1/5/03 Chrome

**Note: Front (hemi) rigging attachment kit (1114997) must be present when using legrest.  
Due to a change to the Legrest Calf Pad size made on 4/23/12, you must also order the hardware kit  
(1068649) when ordering replacement Calf Pads.**

Item Number	Note	Part Number	Description	Quantity Per	
				Package	Assembly
1		1030979	Screw, Phillips Pan Head Tap (#10-32 x 3/4")	1	1
2		1022874	Bumper	1	1
3	A	1087698-NLA	NLA - Handle, Release, Chrome - Right	1	1
3	A	1087699-NLA	NLA - Handle, Release, Chrome - Left	1	1
4		47565X057	Bushing (7/32 x 3/8 x 11/32")	1	1
5		60279X003	Locknut (#10-32)	1	1
6		40163X008	Screw, Phillips Pan Head (#10-32 x 11/16")	1	1
7		1008935	Spring, Release - Right	1	1
7		1008936	Spring, Release - Left	1	1
8		67005X000	Rivnut (#10-32)	1	1
9		40163X002	Screw, Phillips Round Head (#10-32 x 1/2")	1	1
10		1114918-NLA	NLA - Legrest Support Tube Assembly, Hemi, Chrome - Right	1	1
10	E	1114919-NLA	NLA - Legrest Support Tube Assembly, Hemi, Chrome - Left	1	1
11		1027097	Plug Button, Black (3/4")	1	1
12		1040060	Tip, Plastic, Black	1	1
13		1037126	Handle, Release	1	1
14		1049527	Washer, Nylon (3/8 x 3/4 x 1/16")	1	2
15		1022866-NLA	NLA - Screw, Socket Button Head (3/8-16 x 3/4")	1	2
16		40363X000	Hex Nut (3/8"-16)	1	3
17		1022846-NLA	NLA - Bar, Link, Black	1	1
18		1022877-NLA	NLA - Tube, Support and Drive Link, Chrome - Right	1	1
18		1022878-NLA	NLA - Tube, Support and Drive Link, Chrome - Left	1	1
19		1022854-NLA	NLA - Screw, Shoulder Slotted Head (1/2 x 1-1/8", 3/8-16)	1	1
20		10261X000	Nut, Acorn (5/16-24)	1	1
21		04528X002	Bracket, Release, Black	1	1
22		1040831	Ring, Snap	1	1
23		47328X003	Bushing, Pivot (5/16 x 7/16 x 7/8")	1	2
24		42326X004	Bar, Ratchet - Right/Left	1	1
25		1037485	Spring, Release	1	1
26		1037125	Cam, Legrest	1	1
27		1013519	Washer, Nylon (5/16 x 11/16 x 1/16")	1	1
28		1024911-NLA	NLA - Decal, Smartleg	1	1
29		1014807	Screw, Hex Head (5/16-24 x 3-1/4")	1	1
30		48823X008	Spring, Leaf	1	1
31		47328X003	Bushing, Pivot (5/16 x 7/16 x 7/8")	1	1
32		1025133	Spacer, Legrest Pad, Black	1	1
33		04526X019	Plate, Legrest Pad	1	1
34		60264X001	Locknut (5/16-24)	1	1
35		1025104	Bracket, Legrest, Chrome	1	1
36		11232X009	Bolt, Lug (5/16-24 x 1-3/8")	1	1
37		1022848	Tube, Slide, Articulating, Chrome - Right	1	1

# PHAL4A (Hemi) Articulating Legrest Supports

9/1/02-1/5/03 Chrome

Note: Front (hemi) rigging attachment kit (1114997) must be present when using legrest.  
Due to a change to the Legrest Calf Pad size made on 4/23/12, you must also order the hardware kit (1068649) when ordering replacement Calf Pads.

Item Number	Note	Part Number	Description	Quantity Per	
				Package	Assembly
37		1022849	Tube, Slide, Articulating, Chrome - Left	1	1
38		1027377	Washer (#20)	1	1
39		1107321	Nut, Low Cap (5/16"-24)	1	1
40	B,G	8881091764	Pad, Legrest, Vinyl - Right/Left	1	1
41	F	1068649	Hardware, Legrest Pad	1	1
			Screw, Phillips Pan Head (#10-32 x 11/16")	1	2
			Screw, Phillips Pan Head (#10-32 x 1")	1	2
			Instruction Sheet, Legrest Pad Mtg.	1	1
	C,H	1114997	Kit, Front Rigging Hanger Attachment	1	1
			NLA - Bag, Poly Zip-Lip (13" L x 9" W)	1	1
			NLA - Instruction Sheet, Front Rigging Hanger	1	1
			Front Rigging Hanger Assembly w/ Plug Button, Hemi, Black - Right	1	1
			Front Rigging Hanger Assembly w/ Plug Button, Hemi, Black - Left	1	1
			Locknut (1/4-20)	1	4
			NLA - Spacer (1/4 x 3/8 x 3/16")	1	4
			Screw, Hex Head (1/4-20 x 1-1/2")	1	4
			Carton, Shipper	1	1
	D	1114995-NLA	NLA - Legrest Support Assembly, Articulating, Hemi, Chrome - Right	1	1
	D,E	1114996-NLA	NLA - Legrest Support Assembly, Articulating, Hemi, Chrome - Left	1	1

NOTE: A - Right release handle is used on the left side support and the left release handle is used on the right side support.  
B - Specify upholstery color U67 black when ordering.  
C - Not Shown  
D - See pictorial for reference.  
E - No longer available as a service part. There is no replacement.  
F - Includes Screws and Instruction Sheet.  
G - Due to a change to the Legrest Calf Pad size made on 4/23/12, you must also order the hardware kit (1068649) when ordering replacement Calf Pads.  
H - Part number 1110523 is no longer available from the Invacare Service Parts Department. Refer to the Invacare Website under "Product Literature Search". Enter the part number in the "Keywords" field and download a free PDF version copy.