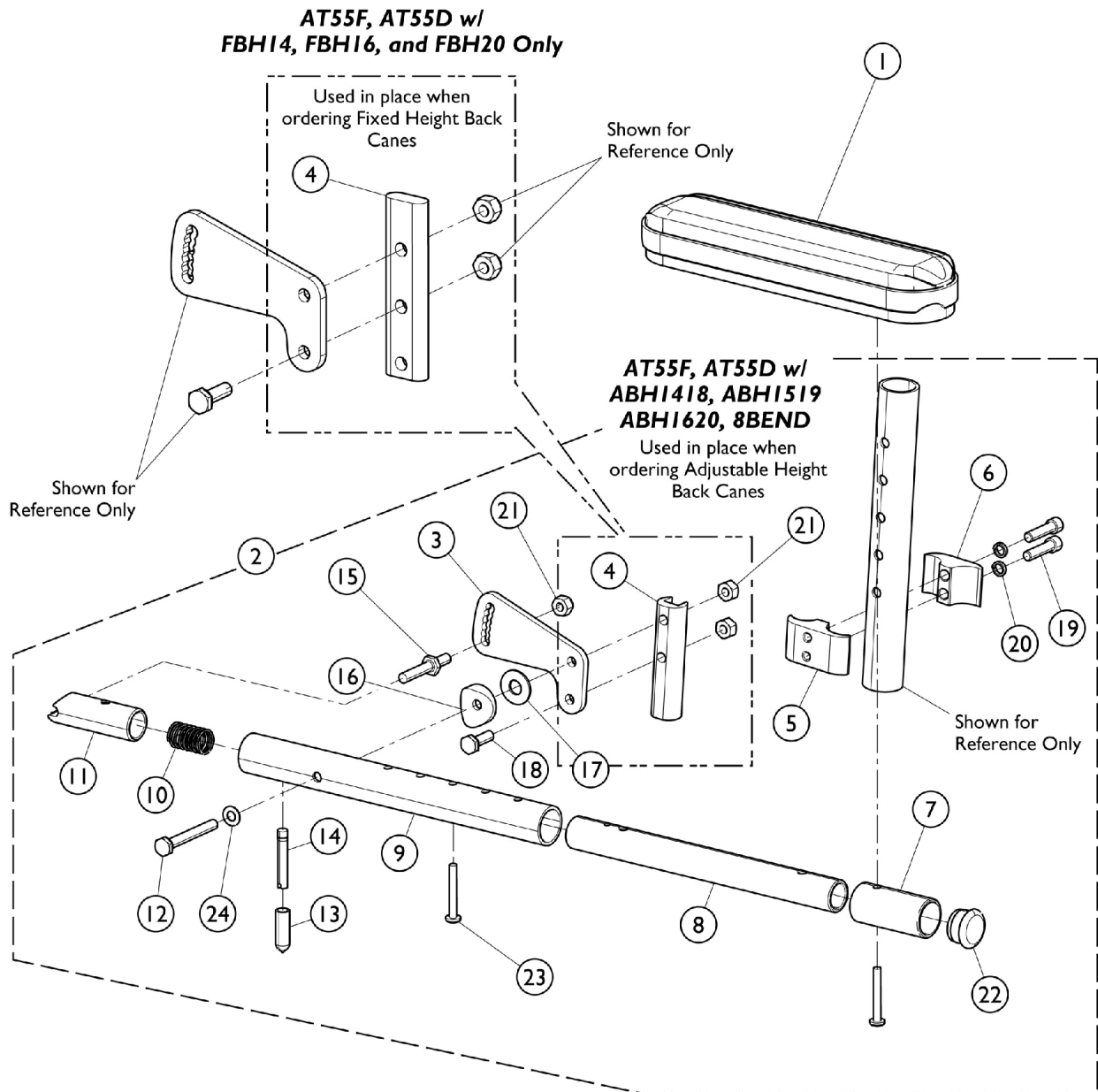


Arms - Cantilever - Clamp On Desk Length (AT55D), Full Length (AT55F)



Arms - Cantilever - Clamp On Desk Length (AT55D), Full Length (AT55F)

Item Number	Note	Part Number	Description	Quantity Per	
				Package	Assembly
1	B	8881011810	Arm Pad, Desk Length w/ Law Label	1	1
1	B	8881055204	Pad, Arm, Desk Length	1	1
1	C	8881127509	Kit, Arm Pad w/Screws - Full Length	1	1
			Package, Screw Phillips Pan Head (#10-32 x 1-1/8")	1	1
			NLA - Pad, Arm, Full Length w/ Law Label	1	1
2	A,D	1068656	Arm Assembly, Cantilever - Right	1	1
3			Bracket, Armrest Mounting, Black	1	1
4			Arm Support, Clamp On	1	1
5			Clamp, Half, Threaded	1	1
6			Clamp, Half, Non-Threaded	1	1
7			Tube, Arm, Extension, Black	1	1
8			Tube, Slide, Cantilever Arm, Black	1	1
9			Tube, Arm, Black	1	1
10			Spring, Compression (5/8 x 1 x 3/64")	1	1
11			Plug, Latch	1	1
12			Screw, Hex Head (1/4-28 x 2")	1	1
13			Tip, Plastic, Black	1	1
14			Lever, Actuator	1	1
15			NLA - Pin, Locking	1	1
16			Spacer, Coved (1/4 x 1 x 9/16")	1	1
17			Washer, Nylon (3/8 x 7/8 x 1/16")	1	1
18			NLA - Screw, Hex Head (1/4-28 x 3/4")	1	1
19			Screw, Socket Head (1/4-20 x 1")	1	2
20			NLA - Lockwasher, High Collar (1/4")	1	2
21			Locknut (1/4-28)	1	3
22			Plug Button, Black (1")	1	1
23			Screw, Phillips Pan Head (#10-32 x 1-3/8")	1	2
24			Washer, Nylon (1/4 x 1/2 x 1/32")	1	1
2	A,D	1068657	Arm Assembly, Cantilever - Left	1	1
3			Bracket, Armrest Mounting, Black	1	1
4			Arm Support, Clamp On	1	1
5			Clamp, Half, Threaded	1	1
6			Clamp, Half, Non-Threaded	1	1
7			Tube, Arm, Extension, Black	1	1
8			Tube, Slide, Cantilever Arm, Black	1	1
9			Tube, Arm, Black	1	1
10			Spring, Compression (5/8 x 1 x 3/64")	1	1
11			Plug, Latch	1	1
12			Screw, Hex Head (1/4-28 x 2")	1	1
13			Tip, Plastic, Black	1	1
14			Lever, Actuator	1	1
15			NLA - Pin, Locking	1	1
16			Spacer, Coved (1/4 x 1 x 9/16")	1	1
17			Washer, Nylon (3/8 x 7/8 x 1/16")	1	1
18			NLA - Screw, Hex Head (1/4-28 x 3/4")	1	1
19			Screw, Socket Head (1/4-20 x 1")	1	2

Arms - Cantilever - Clamp On Desk Length (AT55D), Full Length (AT55F)

Item Number	Note	Part Number	Description	Quantity Per	
				Package	Assembly
20			NLA - Lockwasher, High Collar (1/4")	1	2
21			Locknut (1/4-28)	1	3
22			Plug Button, Black (1")	1	1
23			Screw, Phillips Pan Head (#10-32 x 1-3/8")	1	2
24			Washer, Nylon (1/4 x 1/2 x 1/32")	1	1
2	A,E	1173055	Arm Assembly, Cantilever, Clamp-On - Right	1	1
3			Bracket, Armrest Mounting, Black	1	1
4			NLA - Strap, Wheel Lock	1	1
5			Clamp, Half, Threaded	1	1
6			Clamp, Half, Non-Threaded	1	1
7			Tube, Arm, Extension, Black	1	1
8			Tube, Slide, Cantilever Arm, Black	1	1
9			Tube, Arm, Black	1	1
10			Spring, Compression (5/8 x 1 x 3/64")	1	1
11			Plug, Latch	1	1
12			Screw, Hex Head (1/4-28 x 2")	1	1
13			Tip, Plastic, Black	1	1
14			Lever, Actuator	1	1
15			NLA - Pin, Locking	1	1
16			Spacer, Coved (1/4 x 1 x 9/16")	1	1
17			Washer, Nylon (3/8 x 7/8 x 1/16")	1	1
18			NLA - Screw, Hex Head (1/4-28 x 3/4")	1	1
19			Screw, Socket Head (1/4-20 x 1")	1	2
20			NLA - Lockwasher, High Collar (1/4")	1	2
21			Locknut (1/4-28)	1	3
22			Plug Button, Black (1")	1	1
23			Screw, Phillips Pan Head (#10-32 x 1-3/8")	1	1
24			Washer, Nylon (1/4 x 1/2 x 1/32")	1	1
2	A,E	1173056	Arm Assembly, Cantilever, Clamp-On - Left	1	1
3			Bracket, Armrest Mounting, Black	1	1
4			NLA - Strap, Wheel Lock	1	1
5			Clamp, Half, Threaded	1	1
6			Clamp, Half, Non-Threaded	1	1
7			Tube, Arm, Extension, Black	1	1
8			Tube, Slide, Cantilever Arm, Black	1	1
9			Tube, Arm, Black	1	1
10			Spring, Compression (5/8 x 1 x 3/64")	1	1
11			Plug, Latch	1	1
12			Screw, Hex Head (1/4-28 x 2")	1	1
13			Tip, Plastic, Black	1	1
14			Lever, Actuator	1	1
15			NLA - Pin, Locking	1	1
16			Spacer, Coved (1/4 x 1 x 9/16")	1	1
17			Washer, Nylon (3/8 x 7/8 x 1/16")	1	1
18			NLA - Screw, Hex Head (1/4-28 x 3/4")	1	1
19			Screw, Socket Head (1/4-20 x 1")	1	2

Arms - Cantilever - Clamp On Desk Length (AT55D), Full Length (AT55F)

Item Number	Note	Part Number	Description	Quantity Per	
				Package	Assembly
20			NLA - Lockwasher, High Collar (1/4")	1	2
21			Locknut (1/4-28)	1	3
22			Plug Button, Black (1")	1	1
23			Screw, Phillips Pan Head (#10-32 x 1-3/8")	1	2
24			Washer, Nylon (1/4 x 1/2 x 1/32")	1	1
NOTE: A - Includes items 2 - 24. B - For use with AT55D. C - For use with AT55F. D - For use with ABH1418, ABH1519, ABH1620, and 8BEND Back Cane setups. E - For use with FBH14, FBH16, and FBH20 Back Cane setups.					