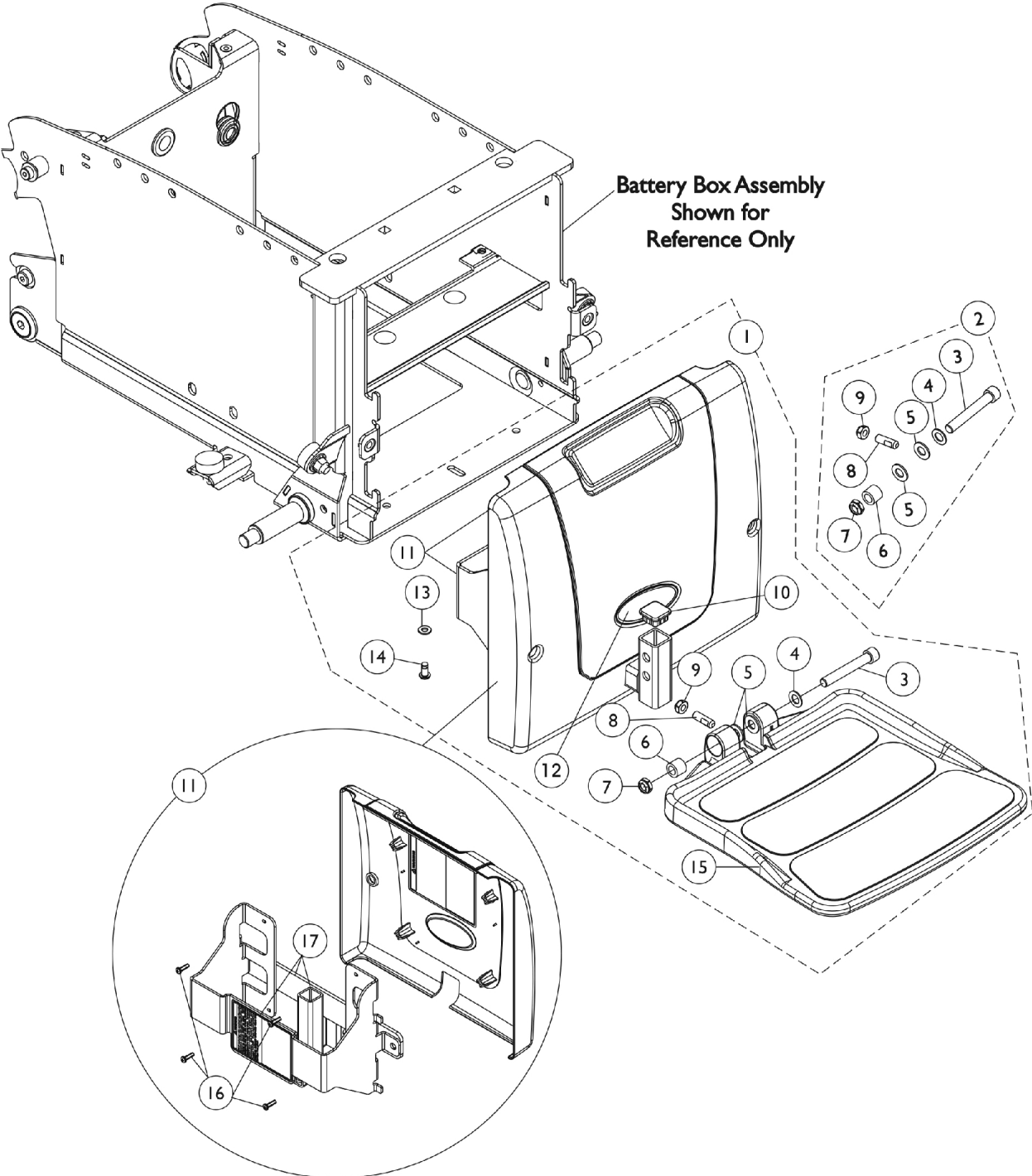


# 90FB Flip-Up Removable Footboard Assembly Before 01/12/12



**Rear view of Shroud  
w/ Decal and Bracket Assembly**

## 90FB Flip-Up Removable Footboard Assembly Before 01/12/12

Item Number	Note	Part Number	Description	Quantity Per		
				Package	Assembly	
1	A	1147943	Kit, 90FB Footboard, Bracket, Shroud, Decals and Hardware (For 22NF Batteries)	1	1	
2	B	1147134	Kit, Footboard Mounting Hardware	1	1	
3			Screw, Socket Head (3/8-16 x 2-1/2")	1	1	
4			Washer, Flat (3/8 x 11/16 x 1/16")	1	1	
5			Washer, Nylon (3/8 x 3/4 x 1/16")	1	2	
6			Bushing (3/8 x 5/8 x 1/2")	1	1	
7			Locknut, Low Profile (3/8-16)	1	1	
8			Screw, Set Socket Flat Point (5/16-18 x 1")	1	1	
9			Locknut (5/16-18)	1	1	
10				1105038	Plug Button, Black (1" Square)	1
11	C	1147937	Front Shroud and Bracket Assembly, 90FB (For 22NF Batteries)	1	1	
12			1090147-NLA	NLA - Decal, Invacare Medallion - Large	1	1
13			1026907	Washer (1/4 x 1/2 x 1/16")	1	1
14			1045267	Screw, Hex Head w/ Patch (1/4-20 x 3/4")	1	1
15			1114311	Footboard w/ Cover (11-1/4" W x 11-1/2" L)	1	1
16			1114276	Screw, Phillips Pan Head (#8-16 x 5/8")	1	4
17			1147133-NLA	NLA - Kit, Bracket with Decal (For 22NF Batteries)	1	1
			1154294-NLA	NLA - Owner's Manual, TDX SI/SI-HD Base	1	1
NOTE: A - Includes items 3-15. Refer to the owner's manual (not shown) part #1154294 for Installation Instructions. B - Includes items 3-9 C - Includes items 16 and 17						