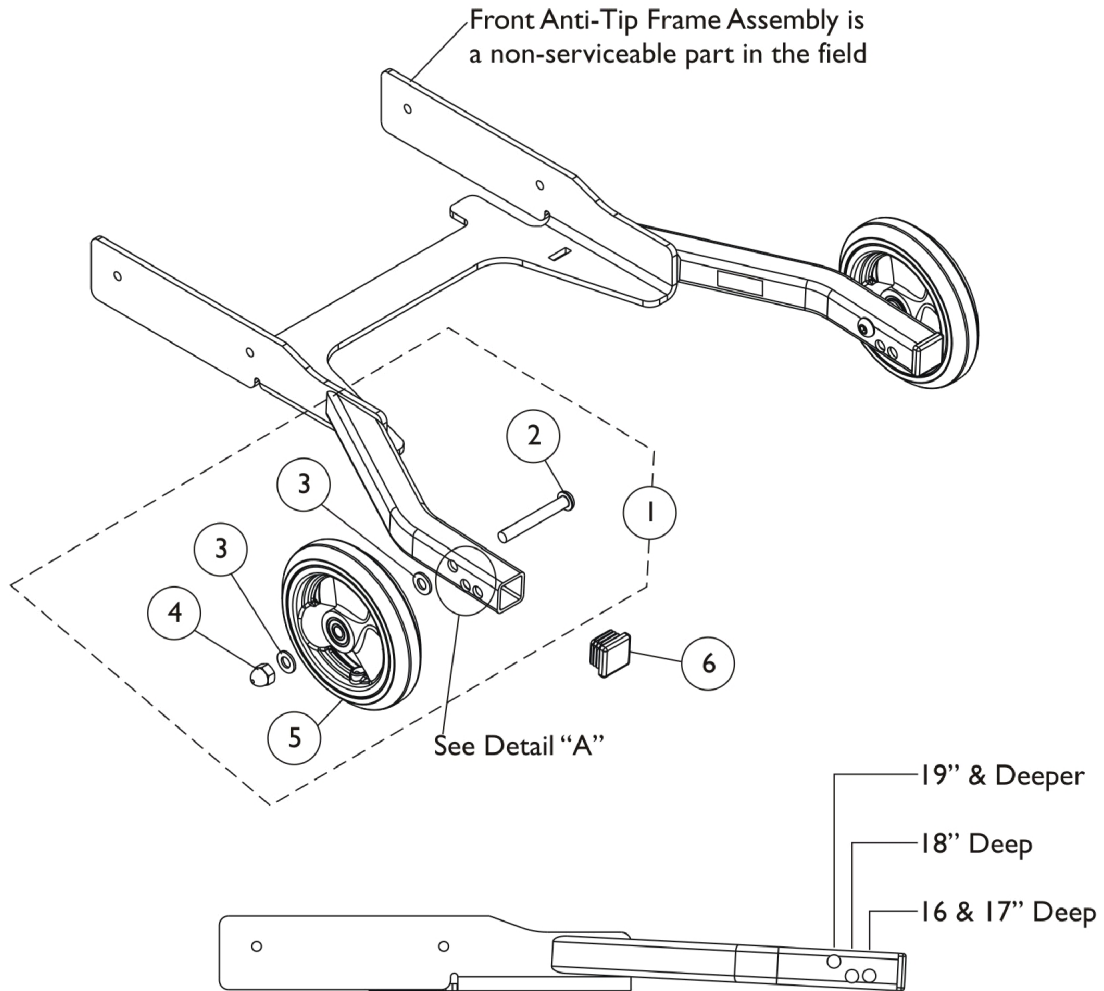


Anti-Tip Assembly - Front (Before 8/2/11)

Non-serviceable parts in the field require the wheelchair to be returned to Invacare for repair. Call Technical Services for assistance (1-800-832-4707)



Detail "A"
Anti-Tip Wheel Placement

Anti-Tip Assembly - Front (Before 8/2/11)

Non-serviceable parts in the field require the wheelchair to be returned to Invacare for repair. Call
Technical Services for assistance (1-800-832-4707)

Item Number	Note	Part Number	Description	Quantity Per	
				Package	Assembly
1	A	1168887	NLA - Kit, Anti-Tip Wheel Assembly and Hardware	1	1
2			NLA - Screw, Socket Button Head (M8 x 1.25 x 60mm)	1	1
3			NLA - Washer, Steel (8.4mm x 16mm x 1.6mm)	1	2
4			NLA - Nut, Acorn (M8 x 1.25)	1	1
5			Wheel Assembly, Composite, Urethane (5" x 1")	1	1
6		1168888	Package, Plug Button, Square, Black (1") (Pair)	2	1

NOTE: A - Includes items 2-5 and accommodates one side only.