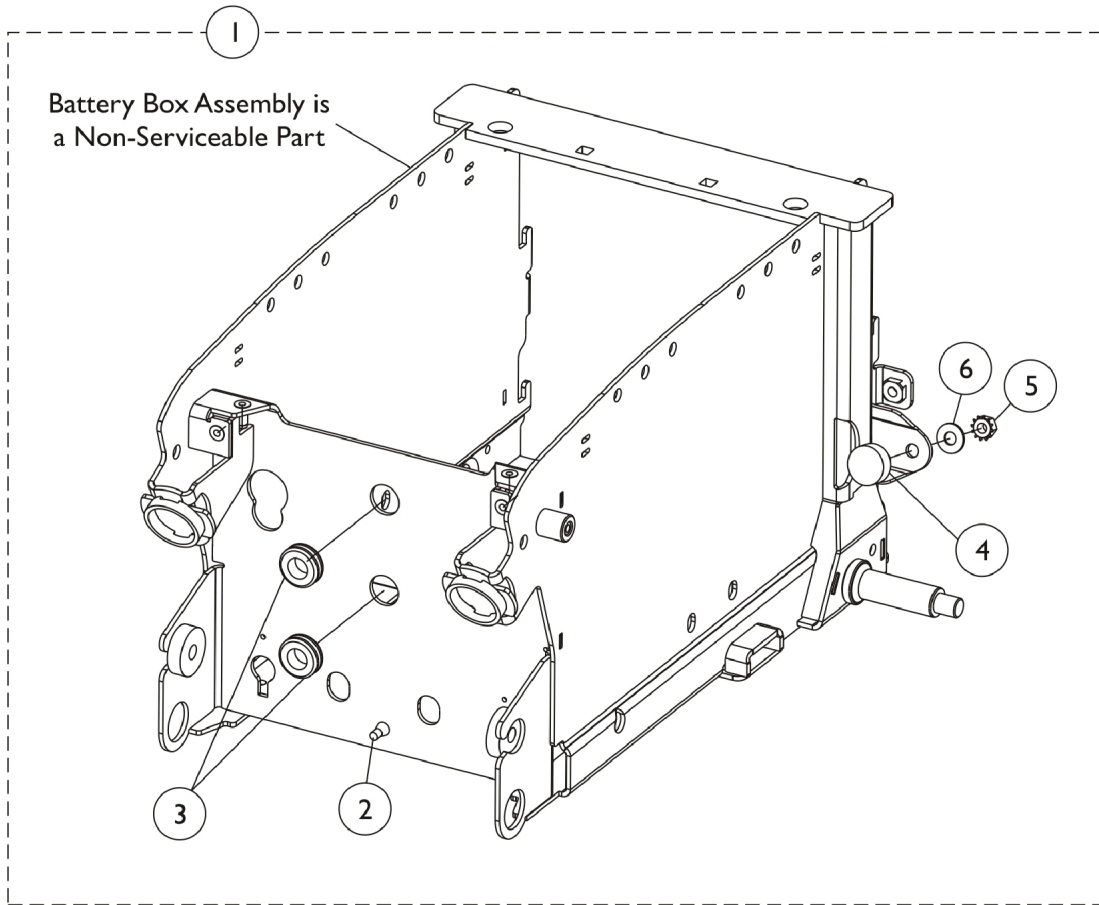


# Battery Box Hardware

## TDX SI & TDX SI-2 After 9/14/11

The Battery Boxes are non-serviceable parts in the field. Wheelchair must be returned to Invacare for repair. Call Technical Services for assistance (1-800-832-4707)



# Battery Box Hardware

## TDX SI & TDX SI-2 After 9/14/11

**The Battery Boxes are non-serviceable parts in the field. Wheelchair must be returned to Invacare for repair. Call Technical Services for assistance (1-800-832-4707)**

Item Number	Note	Part Number	Description	Quantity Per	
				Package	Assembly
1	A	1175905	Kit, Battery Box Rubber Bumper and Grommet Hardware, TDX SI	1	1
2			Bumper, Rubber (7/8" Diameter x 3/16")	1	1
3			Grommet, Rubber (9/16 ID x 1-1/16 OD x 3/8")	1	2
4			Bumper, Rubber (1" Diameter x 3/8")	1	2
5			NLA - Nut, Keps (5/16-18)	1	2
6			Washer, Steel (5/16 x 3/4 x 1/16")	1	2
1	B	1175904-NLA	NLA - Kit, Battery Box Rubber Bumper and Grommet Hardware, TDX SI-HD/TDX SI-2	1	1
2			Bumper, Rubber (7/8" Diameter x 3/16")	1	1
3			Grommet, Rubber (9/16 ID x 1-1/16 OD x 3/8")	1	2
4			NLA - Bumper, Rubber (1" Diameter x 5/8")	1	2
5			NLA - Nut, Keps (5/16-18)	1	2
6			Washer, Steel (5/16 x 3/4 x 1/16")	1	2
NOTE: A - Includes items 2-6. Used for TDX SI models. B - Includes items 2-6. Used for TDX SI-2 models.					