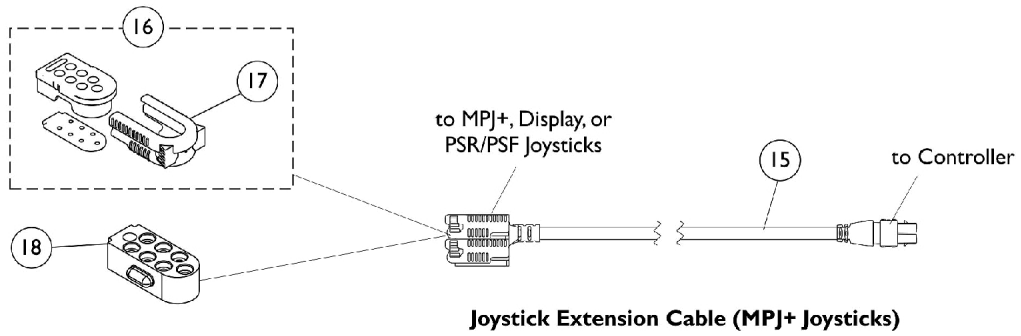
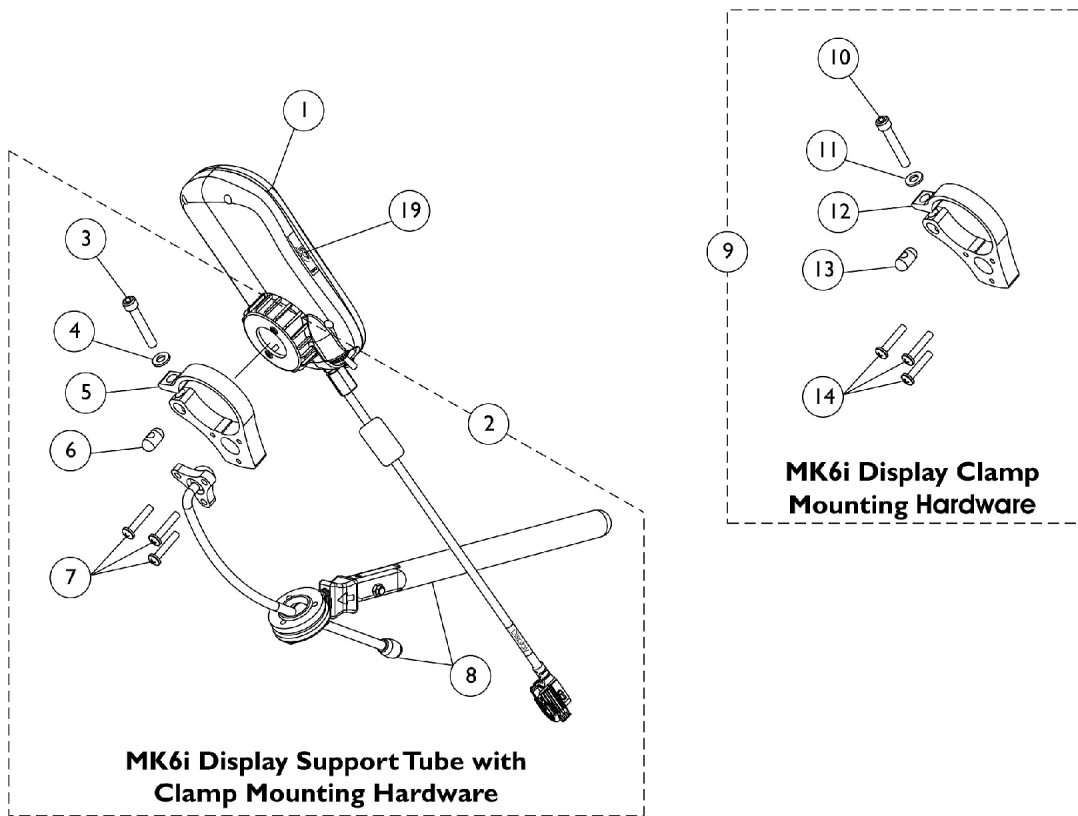


Display (ASLRDYM6)



Display (ASLRDYM6)

Item Number	Note	Part Number	Description	Quantity Per	
				Package	Assembly
1		1136880-NLA	NLA - Display, MK6i (ASLRDYM6)	1	1
1		1136880E-NLA	NLA - WARR RPLMT - Display, MK6i (ASLRDYM6)	1	1
2	A	1144857	Kit, MK6i Display Support Tube with Clamp Mounting Hardware	1	1
3			NLA - Screw, Socket Head (1/4-28 x 1-1/2")	1	1
4			Washer (1/4 x 1/2 x 1/16")	1	1
5			Clamp, Display	1	1
6			Pin, Threaded (3/8" x 3/4")	1	1
7			Screw, Phillips Pan Head (#10-32 x 1")	1	3
8			Display Support Tube Assembly	1	1
9	B	1144594	Kit, Display Joystick Clamp Mounting Hardware	1	1
10			NLA - Screw, Socket Head (1/4-28 x 1-1/2")	1	1
11			Washer (1/4 x 1/2 x 1/16")	1	1
12			Clamp, Display	1	1
13			Pin, Threaded (3/8" x 3/4")	1	1
14			Screw, Phillips Pan Head (#10-32 x 1")	1	3
15	C	1140038-NLA	NLA - Cable, MK6i Joystick Extension, (PWH) (34" L)	1	1
15	D	1133180	Cable, MK6i Joystick Extension, (PWH) (16" L)	1	1
15	E,E1	1140039-NLA	NLA - Cable, MK6i Joystick Extension, (PWH) (58" L)	1	1
16	F	1133182	Cap, Top Connector, 7 Pin, Black	1	1
17	G	1145408-NLA	NLA - Latch, Top Connector, Black	1	1
18		1133183-NLA	NLA - Cap, Bottom Connector, 7 Pin	1	1
19		1139997	Cover, SD Card Slot	1	1

NOTE: A - Includes items 3-8.
 B - Includes items 10-14.
 C - Used on Non-Elevate 3G Storm Series wheelchairs Before 12/10/07.
 D - Used on all wheelchairs with multi-purpose joystick (MPJ/CMPJ) (excluding Note C) and WithOut any of the following: Any power seating; LNX/ELRPW power leg options; or any of the electronics in E1. It is used with MPCTMT and conventional actuators.
 E - Used on all wheelchairs with multi-purpose joystick (MPJ/CMPJ) and With any of the following: Any power seating option; LNX/ELRPW power leg options; or With any of the electronics in E1
 E1 - SNPM6, 5018M6, 5020M6, 1558M6, PACM6, 4WSB, S4WSB, AUX12M6, AUX34M6, RFM, IR, SANODE, ELRPW, ELRPW22, LNX, LNX-L. Also used on all Formula seating SMTACT and MPCTMT.
 F - Includes Main Body, Gasket, and Latch. Latch is the only item offered individually.
 G - Item 17 part #1145408 is No Longer Available separately, order item 16 part #1133182