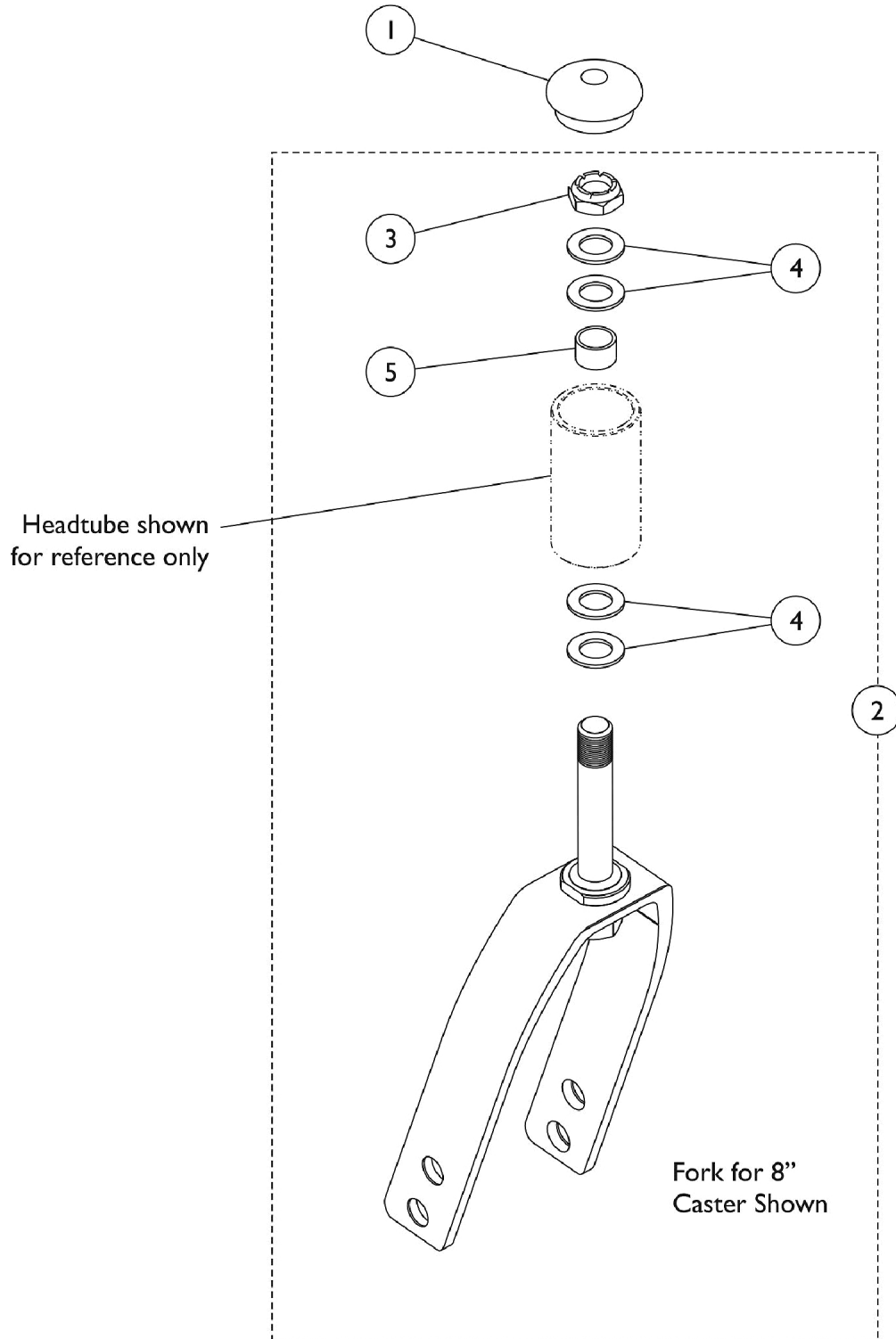


Forks & Hardware (Before 7/1/11)

(Upper hole on fork determines the lowest STF dimension.)



Forks & Hardware (Before 7/1/11)

(Upper hole on fork determines the lowest STF dimension.)

Item Number	Note	Part Number	Description	Quantity Per	
				Package	Assembly
1		1088523	Plug Button, Head Tube, Black	1	1
2	A,B	1118545	Kit, Fork (5") w/ Short Stem	1	1
			NLA - Fork, Caster	1	1
			Stem, Fork, Short	1	1
3			Locknut (1/2-20)	1	2
4			Washer, Plain (1/2 x 7/8 x 1/16)	1	6
5			Spacer (1/2 x 5/8 x 3/8")	1	1
2	A,C	1118546	Kit, Fork Assembly w/ Hardware (6 x 2" - 8" Caster)	1	1
			Fork, Caster	1	1
			Stem, Fork, Short	1	1
3			Locknut (1/2-20)	1	2
4			Washer (1/2 x 7/8 x 3/64")	1	6
5			Spacer (1/2 x 5/8 x 3/8")	1	1
3		1025737	Locknut (1/2-20)	1	1
4		1026174	Washer (1/2 x 7/8 x 3/64")	1	4
5		1111931	Spacer (1/2 x 5/8 x 3/8")	1	1
NOTE: A - Includes pre-assembled Fork and Stem in addition to Head Tube mounting hardware items 3, 4, and 5. B - Used with 4, 5, or 6 x 1 inch Casters. See Owner's Manual for Fork and Caster seat to floor (STF) combinations. C - Used with 6 x 2, or 8 inch Casters. See Owner's Manual for Fork and Caster seat to floor (STF) combination.					