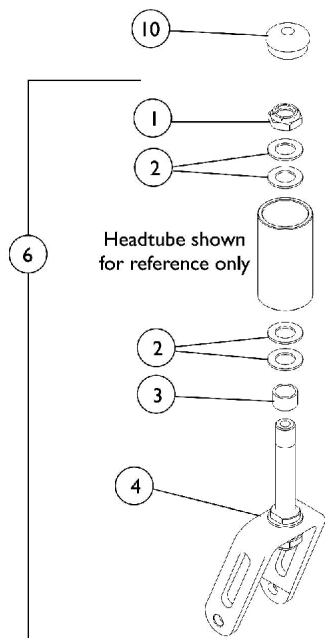
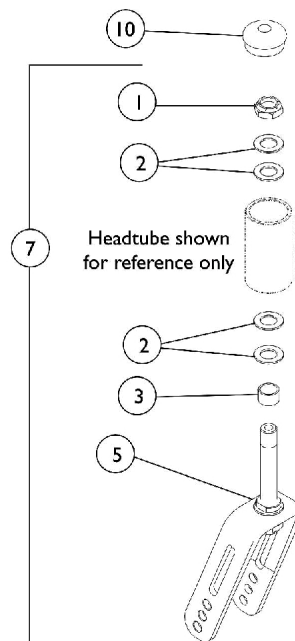


Forks and Hardware

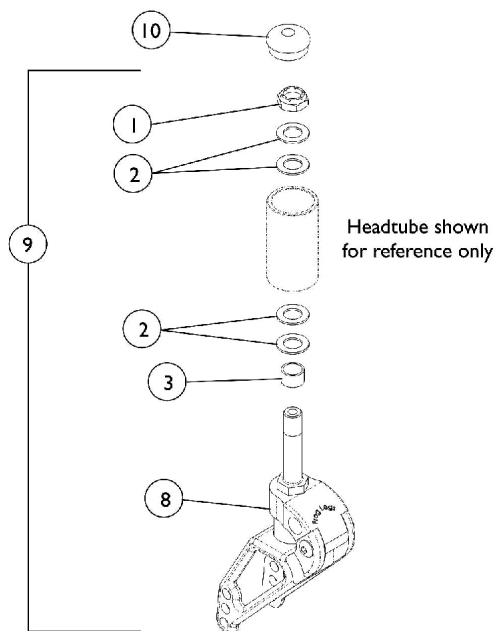


3", 4", and 5" Casters (Short Fork)



6" Casters (Long Fork)

Non Suspension Forks



Suspension Forks

Forks and Hardware

Item Number	Note	Part Number	Description	Quantity Per	
				Package	Assembly
1		1025737	Locknut (1/2-20)	1	1
2		1026174	Washer (1/2 x 7/8 x 3/64")	1	4
3		1111931	Spacer (1/2 x 5/8 x 3/8")	1	1
4	A	1114136	Fork and Stem Assembly	1	1
5	B	1114137	Fork and Stem Assembly	1	1
6	A,C,J	1111933-NLA	NLA - Kit, Fork and Stem Assembly w/ Hardware (3 - 4" Caster)	1	2
			Fork, Caster	1	1
			Stem, Fork, Short	1	1
			Locknut (1/2-20)	1	2
			Washer, Plain (1/2 x 7/8 x 1/16)	1	6
			Spacer (1/2 x 5/8 x 3/8")	1	1
7	B,D	1112131	Fork and Stem Assembly	1	1
8		1116513-NLA	NLA - Forks, Suspension, Soft Setting (Pair)	2	1
8		1063560-NLA	NLA - Fork, Suspension, Firm Setting - Standard (Pair)	2	1
9	E	1121371-NLA	NLA - Fork, Suspension with Stem Hardware, Soft Setting (Pair)	2	1
9	E	1121372	0	2	1
	F	1121375-NLA	NLA - Kit, Suspension Bolt-On, Soft Setting (Pair)	2	1
	F	1121376-NLA	NLA - Kit, Suspension Bolt-On, Firm Setting (Pair)	2	1
10	G	1088523	Plug Button, Head Tube, Black	1	2
10	H	1116007-NLA	NLA - Plug Button, Head Tube, Black	1	2

NOTE: A - 3", 4", 5" Casters. See owner's manual for seat to floor configurations.
 B - 6" Casters. See owner's manual for seat to floor configurations.
 C - Includes items 1 - 4.
 D - Includes items 1 - 3 and 5.
 E - Includes items 1 - 3 and 8.
 F - Not shown in illustration. Kits include Suspension Forks and Rear Shock Absorbers plus Caster Mounting Hardware.
 G - For Aluminum Frame chairs.
 H - For Titanium Frame chairs. No Longer Available. Order part number 1088523 as a replacement.
 J - 1/5/2009, the 3" Fork was revised to have two positioning holes instead of one. For chairs manufactured before 1/5/2009 it is recommended to order two forks to match.