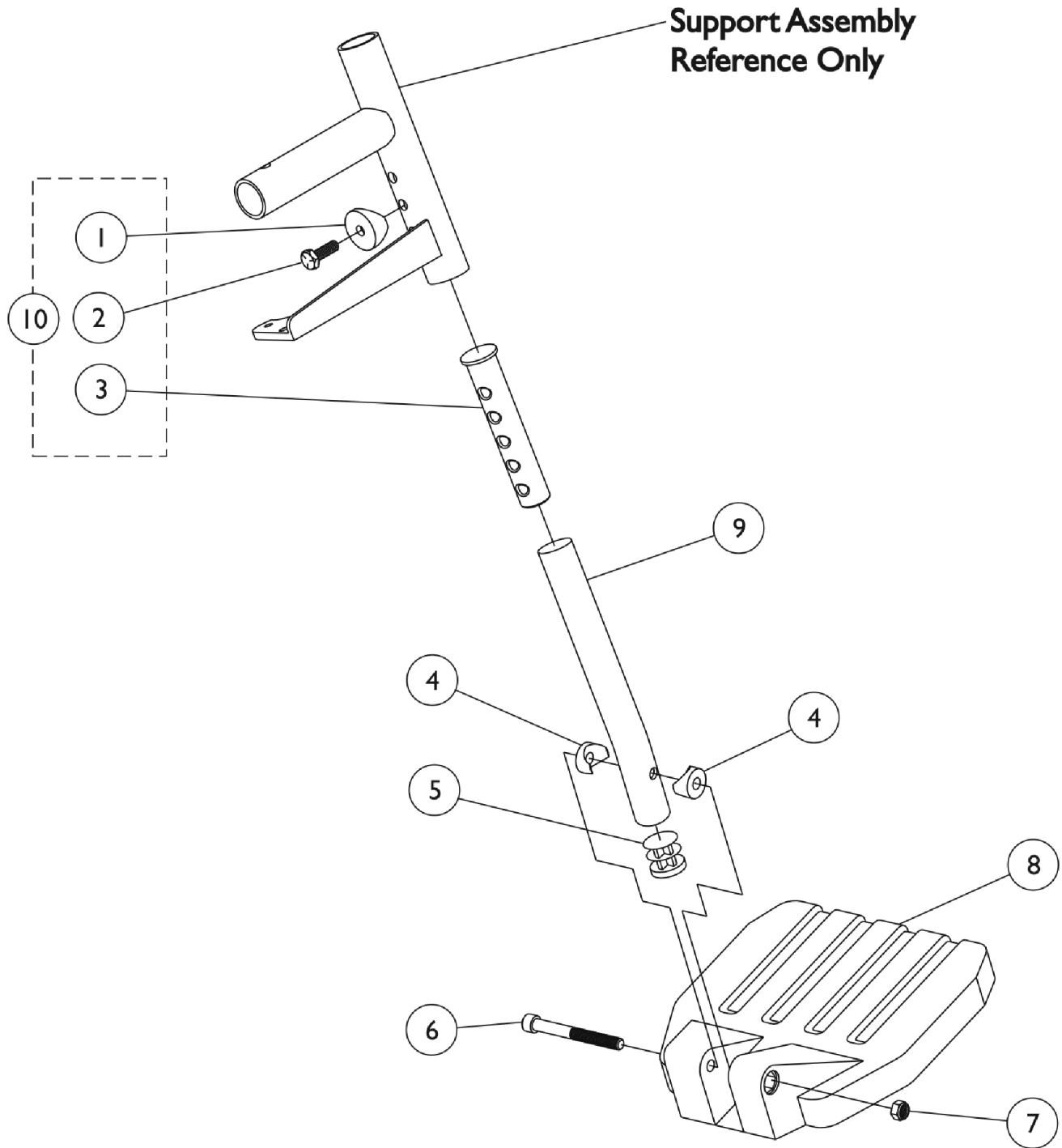


Footplate, Pivot Tube, and Hardware -1651 Composite



Footplate, Pivot Tube, and Hardware -1651 Composite

Item Number	Note	Part Number	Description	Quantity Per	
				Package	Assembly
1	A	1026099	Spacer, Coved (1/4 x 11/16 x 1/2")	1	1
2		1045267	Screw, Hex Head w/ Patch (1/4-20 x 3/4")	1	1
3		1020534	Insert, Threaded	1	1
4		1025457	Spacer, Coved (1/4 x 3/4 x 11/32")	1	2
5		1027097	Plug Button, Black (3/4")	1	1
6		60285X006	Screw, Socket Head (1/4-20 x 2-1/4")	1	1
7		1025195	Locknut (1/4-20)	1	1
8		1026879	Footplate, Composite, Small, Black (6" W x 6" L)	1	1
8		1026880	Footplate, Composite, Medium, Black (7" W x 6" L)	1	1
8		1026881	Footplate, Composite, Large, Black (8" W x 6" L)	1	1
9		1120383	Tube, Pivot/Slide, Curved End, Black - Short (8-1/4")	1	1
9		1120382	Tube, Pivot/Slide, Curved End, Black - Long (9-7/8")	1	1
9		1120386	Tube, Pivot/Slide, Curved, 2" Longer, Black (11-7/8")	1	1
9		1120384-NLA	NLA - Tube, Pivot/Slide, Straight - Alum. (9-7/8" L)	1	1
9		1120385	Tube, Pivot/Slide, Straight - Black (11-7/8" L)	1	1
9		1061967	Tube, Pivot/Slide, Straight, Black (5-1/2")	1	1
10	1026703	Kit, Pivot/Slide Tube Mounting Hardware (Pair)	1	1	
NOTE: A - As of 8/15/03, the Threaded Insert was revised from 3 to 5 Holes. Threaded Insert is Backward Compatible and does not require ordering in Pairs.					