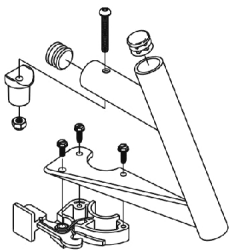
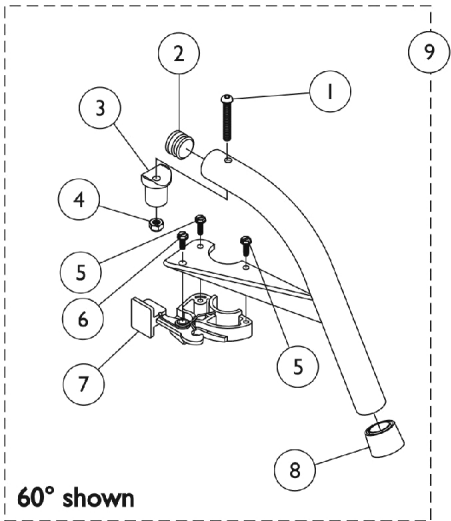
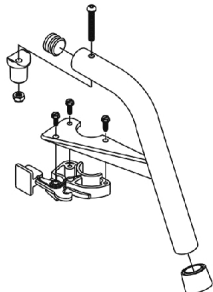


# Footrest Support Assemblies

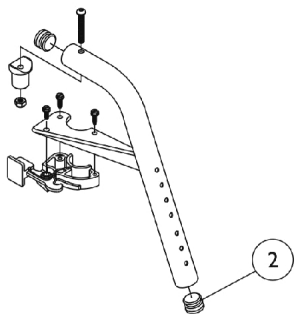
## Swingaway 60 Degree, 70 Degree, and 90 Degree



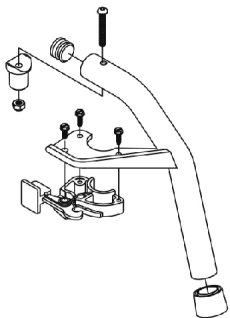
60° MFX



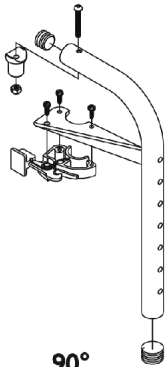
70° Non-Tapered



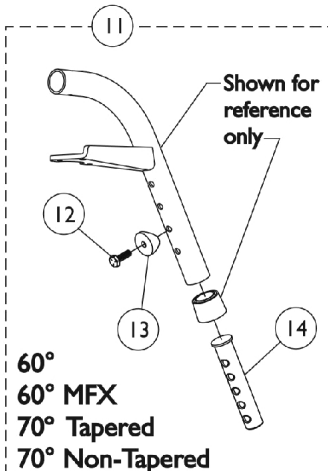
70° MFX



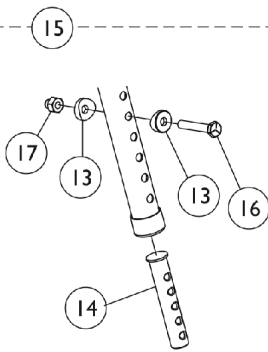
70° Tapered



90°

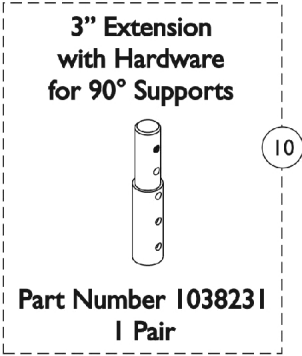


60°  
60° MFX  
70° Tapered  
70° Non-Tapered



60° Heavy Duty Steel  
70° Non-Tapered  
Heavy Duty Steel

Slide Tube Mounting Hardware



## Footrest Support Assemblies

### Swingaway 60 Degree, 70 Degree, and 90 Degree

Item Number	Note	Part Number	Description	Quantity Per	
				Package	Assembly
1		1001762	Screw, Socket Button Head (1/4-20 x 1-3/4")	1	1
2	I	1029501	Plug Button, Black (1")	1	1
2	I	1056328	Plug Button, Black (1")	1	1
3		1017148	Pivot, Footrest	1	1
4		1025736	Locknut (1/4-20)	1	1
5		1025451	Screw, Slotted Hex Washer Head (#10-32 x 5/8")	1	2
6		1017423	Screw, Slotted Hex Washer Head w/ Patch (#10-32 x 1/2")	1	1
7		1025454	Housing, Latch - Right	1	1
7		1025455	Housing, Latch - Left	1	1
8		1026124	Collar, Anti-Rattle	1	1
9	A,E	8881026992	Footrest Support Assembly, 60 Degree, Sector, Color - Right	1	1
9	A,E	8881026993	Footrest Support Assembly, 60 Degree, Sector, Color - Left	1	1
9	A,E	8881026998	Footrest Support Assembly, 60 Degree MFX, Sector, Color - Right	1	1
9	A,E	8881026999	Footrest Support Assembly, 60 Degree MFX, Sector, Color - Left	1	1
9	A,B,D	8881053158	Footrest Support Assembly, 60 Degree Heavy Duty, Sector, Color - Right	1	1
9	A,B,D	8881053157	Footrest Support Assembly, 60 Degree Heavy Duty, Sector, Color - Left	1	1
9	A,E	8881026994	Footrest Support Assembly, 70 Degree Non-Tapered, Sector, Color - Right	1	1
9	A,E	8881026995	Footrest Support Assembly, 70 Degree Non-Tapered, Sector, Color - Left	1	1
9	A,E	8881026996	Footrest Support Assembly, 70 Degree Tapered, Sector, Color - Right	1	1
9	A,E	8881026997	Footrest Support Assembly, 70 Degree, Tapered, Sector, Color - Left	1	1
9	A,E	8881047481	Footrest Support Assembly, 70 Degree MFX, Sector, Color - Right	1	1
9	A,E	8881047480	Footrest Support Assembly, 70 Degree MFX, Sector, Color - Left	1	1
9	A,B,D	8881053149	Footrest Support Assembly, 70 Degree Non-Tapered Heavy Duty, Sector, Color - Right	1	1
9	A,B,D	8881053148	Footrest Support Assembly, 70 Degree Non-Tapered Heavy Duty, Sector, Color - Left	1	1
9	A,E	8881062596	Footrest Support Assembly, 90 Degree, Sector, Color - Right	1	1
9	A,E	8881062597	Footrest Support Assembly, 90 Degree, Sector, Color - Left	1	1
10	A	8881038231	Kit, 3" Extension w/ Hardware (Pair)	1	1
11		1026703	Kit, Pivot/Slide Tube Mounting Hardware (Pair)	1	1
12		1045267	Screw, Hex Head w/ Patch (1/4-20 x 3/4")	1	1
13	F	1026099	Spacer, Coved (1/4 x 11/16 x 1/2")	1	1
14	G	1020534	Insert, Threaded	1	1
15	C	1074143	Kit, Slide Tube Mounting Hardware	1	1

# Footrest Support Assemblies

## Swingaway 60 Degree, 70 Degree, and 90 Degree

Item Number	Note	Part Number	Description	Quantity Per	
				Package	Assembly
16		1070759	Screw, Hex Head (1/4-20 x 1-1/2")	1	1
17		1044214	Nut, Hex with Nylon Cap (1/4-20)	1	1
	B,H	1026987	Guard, Impact (8" L)	1	1
NOTE: A - Specify frame color when ordering. B - Not Shown C - Heavy Duty Only D - Uses Item Number 2, Plug Button 1029501 E - Uses Item Number 2, Plug Button 1056328 F - Item 15 Uses 2 per Assembly G - As of 8/15/03, the Threaded Insert was revised from 3 to 5 Holes. Threaded Insert is Backward Compatible and does not require ordering in Pairs. H - For 70 deg. Tapered Footrest. I - See item #9 footnote D or E for Front Rigging Plug Button usage.					