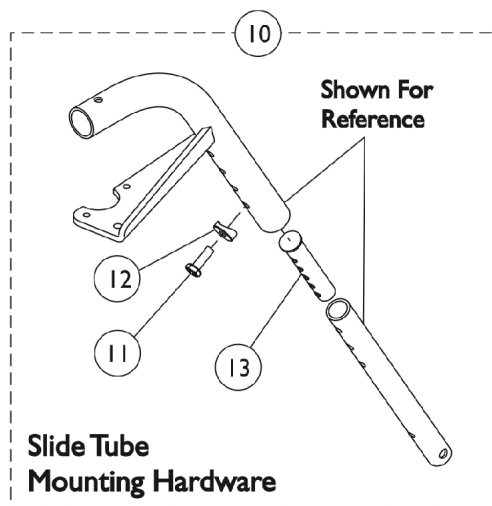
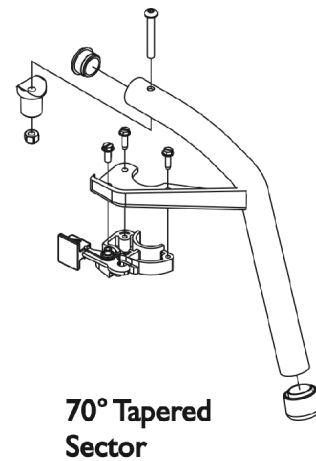
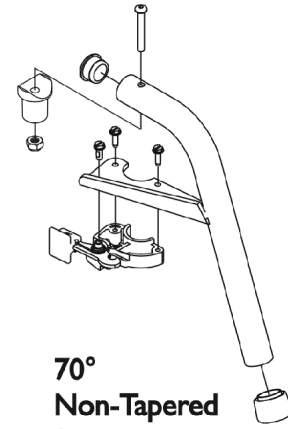
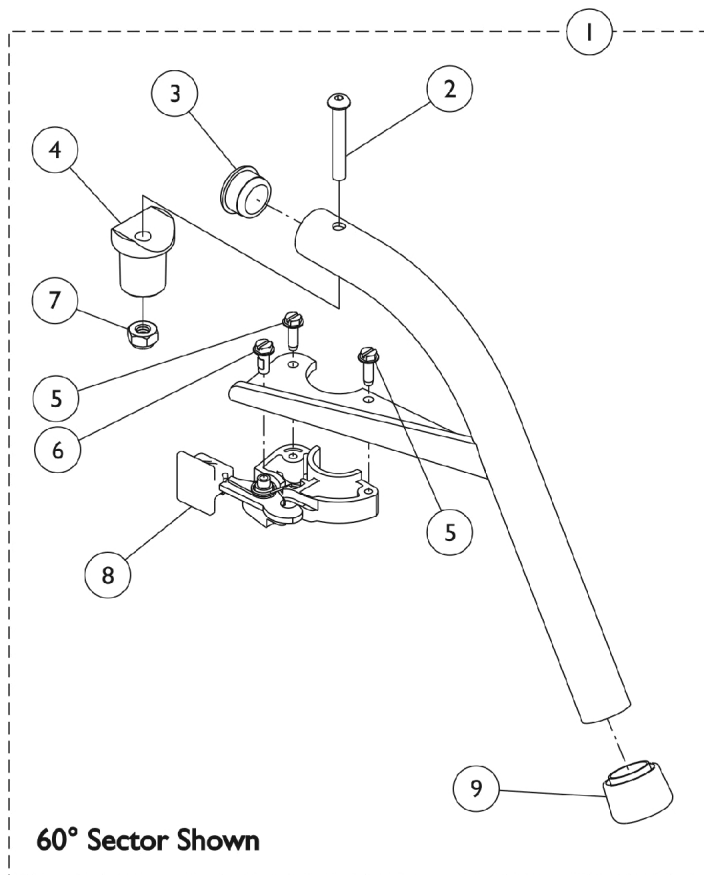


# Footrest Support Assemblies

## Swingaway 60° and 70°



## Footrest Support Assemblies Swingaway 60° and 70°

Item Number	Note	Part Number	Description	Quantity Per	
				Package	Assembly
1	A	See Chart	#1. Footrest Support Assemblies	1	1
2		1001762	Screw, Socket Button Head (1/4-20 x 1-3/4")	1	1
3		1056328	Plug Button, Black (1")	1	1
4		1017148	Pivot, Footrest	1	1
5		1025451	Screw, Slotted Hex Washer Head (#10-32 x 5/8")	1	2
6		1017423	Screw, Slotted Hex Washer Head w/ Patch (#10-32 x 1/2")	1	1
7		1025736	Locknut (1/4-20)	1	1
8		1025454	Housing, Latch - Right	1	1
8		1025455	Housing, Latch - Left	1	1
9		1026124	Collar, Anti-Rattle	1	1
10		1026703	Kit, Pivot/Slide Tube Mounting Hardware (Pair)	1	1
11		1045267	Screw, Hex Head w/ Patch (1/4-20 x 3/4")	1	1
12		1026099	Spacer, Coved (1/4 x 11/16 x 1/2")	1	1
13	C B,D B B	1020534	Insert, Threaded	1	1
		1026987	Guard, Impact (8" L)	1	1
		1054571	Kit, Sector Block - Right	1	1
		1054572	Kit, Sector Block - Left	1	1

NOTE: A - Specify frame color when ordering see page titled, "Frame Finishes and Touch-up Paint".  
B - Not Shown  
C - As of 8/15/03, the Threaded Insert was revised from 3 to 5 Holes. Threaded Insert is Backward Compatible and does not require ordering in Pairs.  
D - For 70 deg. Tapered Footrest.

Front Rigging Supports for chairs built before 4/92 must be replaced with a pair, also, new sectors must be ordered (1054571 Right and 1054572 Left) for all model chairs built Before 4/4/95.

### #1. Footrest Support Assemblies

Support Style	Right Side Part Number	Left Side Part Number
60 Degree, Sector	8881026992	8881026993
70 Degree, Non-Tapered Sector	8881026994	8881026995
70 Degree, Tapered Sector	8881026996	8881026997