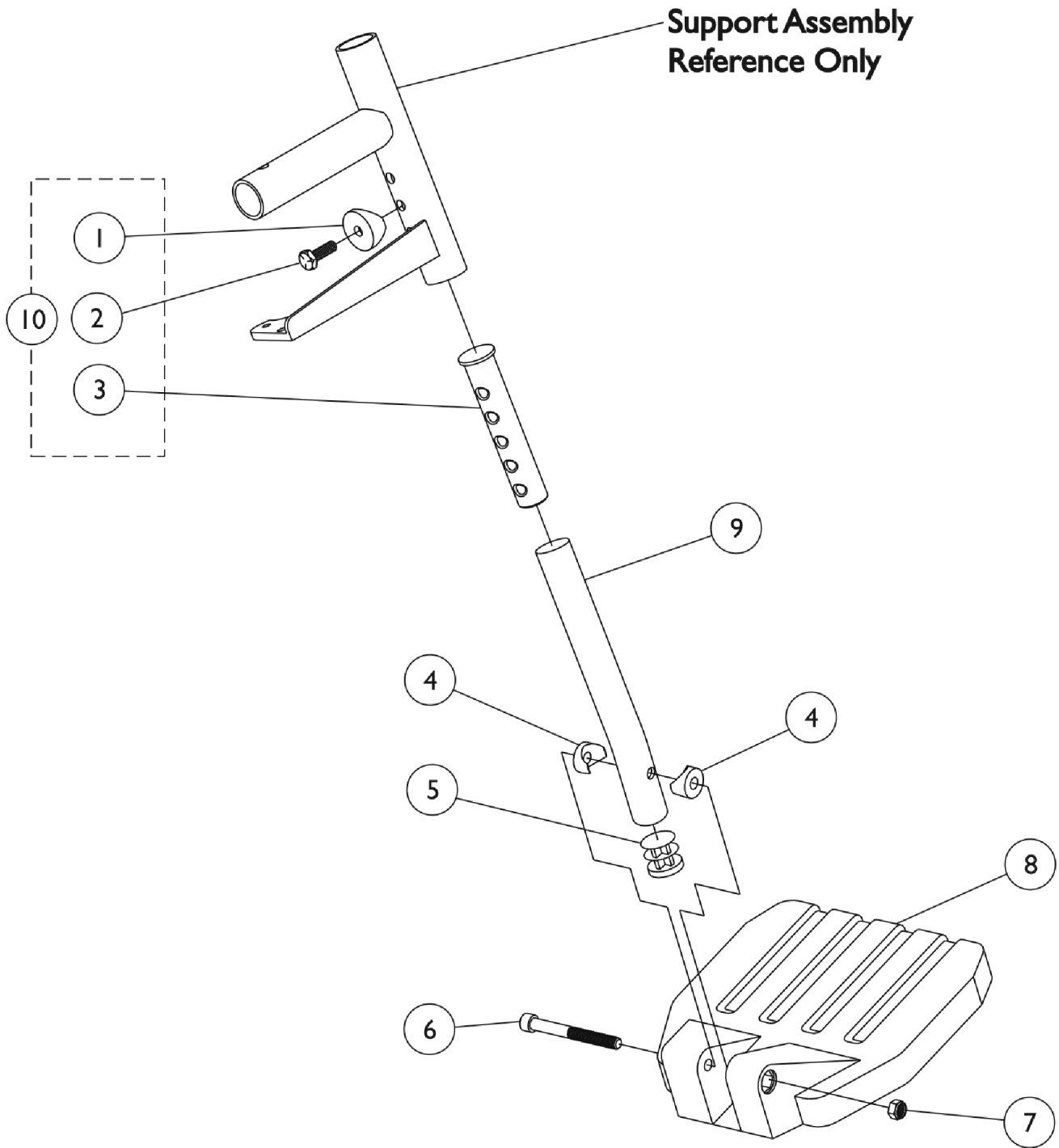


# 1651 Composite Footplate and Pivot Slide Tube Assemblies (Less Heel Loops)



# 1651 Composite Footplate and Pivot Slide Tube Assemblies (Less Heel Loops)

Item Number	Note	Part Number	Description	Quantity Per	
				Package	Assembly
1		1026099	Spacer, Coved (1/4 x 11/16 x 1/2")	1	1
2		1045267	Screw, Hex Head w/ Patch (1/4-20 x 3/4")	1	1
3	C	1020534	Insert, Threaded	1	1
4		1025457	Spacer, Coved (1/4 x 3/4 x 11/32")	1	2
5		1027097	Plug Button, Black (3/4")	1	1
6		60285X006	Screw, Socket Head (1/4-20 x 2-1/4")	1	1
7		1025195	Locknut (1/4-20)	1	1
8		1026879	Footplate, Composite, Small, Black (6" W x 6" L)	1	1
8		1026880	Footplate, Composite, Medium, Black (7" W x 6" L)	1	1
8		1026881	Footplate, Composite, Large, Black (8" W x 6" L)	1	1
9	A	1120382	Tube, Pivot/Slide, Curved End, Black - Long (9-7/8")	1	1
9	A	1120386	Tube, Pivot/Slide, Curved, 2" Longer, Black (11-7/8")	1	1
9	B	1120384-NLA	NLA - Tube, Pivot/Slide, Straight - Alum. (9-7/8" L)	1	1
9	B	1120385	Tube, Pivot/Slide, Straight - Black (11-7/8" L)	1	1
10		1026703	Kit, Pivot/Slide Tube Mounting Hardware (Pair)	1	1
11		See Chart	#11 60° Pivot Slidetube with Composite Footplate	1	1
11		See Chart	#11 70° Pivot Slide Tube with Composite Footplates	1	1

NOTE: A - 60°  
B - 70°  
C - As of 8/15/03, the Threaded Insert was revised from 3 to 5 Holes. Threaded Insert is Backward Compatible and does not require ordering in Pairs.

## #11 Pivot Slide Tube with Composite Footplate

### 60° / Elevating

Chair Width	Side	Small Adult Footplate 6x6"	Medium Adult Footplate 6x7"	Large Adult Footplate 6x8"
14"	Right	1028391	--	--
	Left	1028392	--	--
16"	Right	--	1028387	--
	Left	--	1028388	--
17-20"	Right	--	--	1028383
	Left	--	--	1028384
2" Longer Pivot Tube	Right	1032627-NLA	1032625-NLA	1032623-NLA
	Left	1032628-NLA	1032626-NLA	1032624-NLA
70° Non-Tapered/ 70° Tapered	Right	1042784-NLA	--	--
	Left	1042785-NLA	--	--
16"	Right	--	1042786	--
	Left	--	1042787	--
17-20"	Right	--	--	1042788
	Left	--	--	1042789

# 1651 Composite Footplate and Pivot Slide Tube Assemblies (Less Heel Loops)

## #11 Pivot Slide Tube with Composite Footplate

60° / Elevating

Chair Width	Side	Small Adult Footplate 6x6"	Medium Adult Footplate 6x7"	Large Adult Footplate 6x8"
2" Longer Pivot Tube	Right	1042790	1042792	1042794
	Left	1042791	1042793	1042795

# 1651 Composite Footplate and Pivot Slide Tube Assemblies (Less Heel Loops)

## #11 Pivot Slide Tube with Composite Footplates

70° Non-Tapered, 70° Tapered

Chair Width	Side	Small Adult Footplate 6"x6"	Medium Adult Footplate 6"x7"	Large Adult Footplate 6"x8"
14" W	Right	1042784-NLA	--	--
	Left	1042785-NLA	--	--
16" W	Right	--	1042786	--
	Left	--	1042787	--
17-20" W	Right	--	--	1042788
	Left	--	--	1042789
2" Longer Pivot Slide Tube	Right	1042790	1042792	1042794
2" Longer Pivot Slide Tube	Left	1042791	1042793	1042795