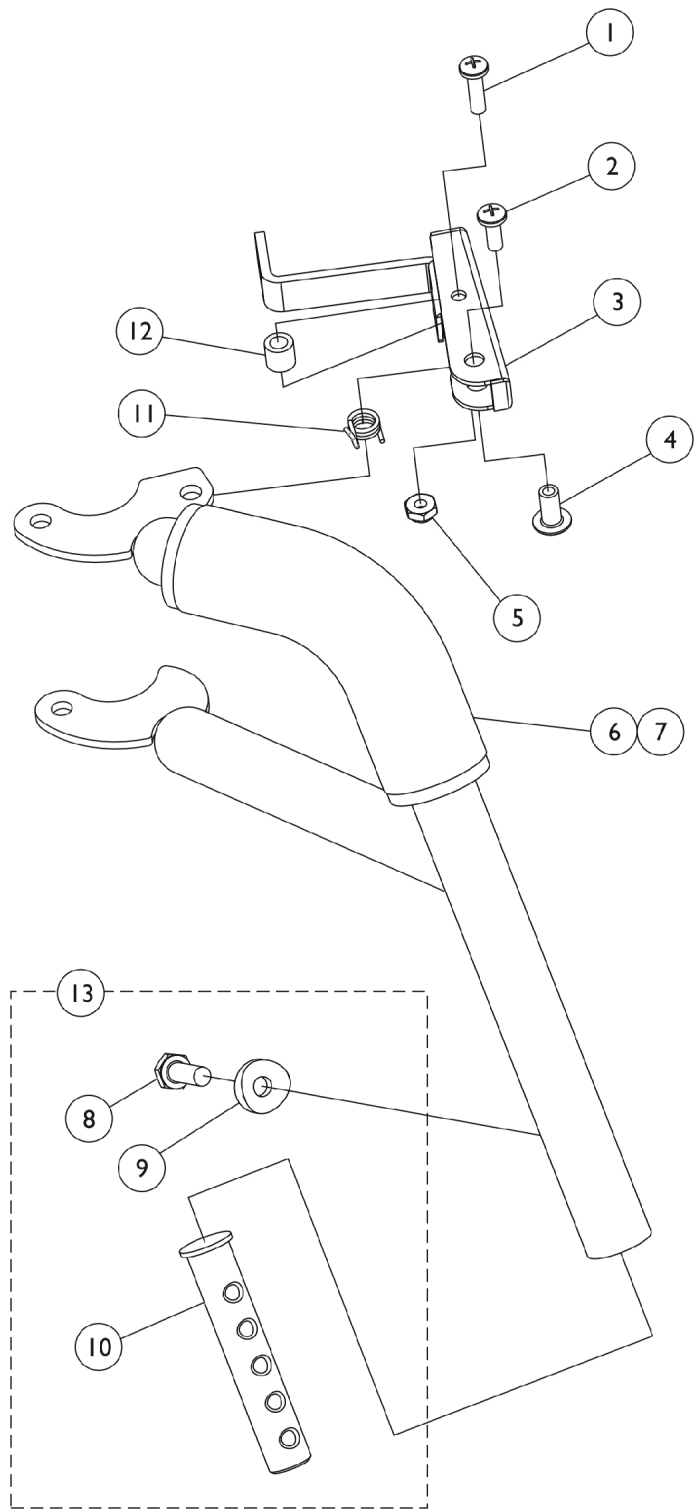


P93ST Footrest Supports



P93ST Footrest Supports

Item Number	Note	Part Number	Description	Quantity Per	
				Package	Assembly
1		1025716	Screw, Phillips Pan Head (#10-32 x 11/16")	1	1
2		1026114	Screw, Phillips Pan Head (#10-32 x 1/2")	1	1
3		1035539	Handle, Release, Black - Right	1	1
3		1035540	Handle, Release, Black - Left	1	1
	A,B	1006490	Tip, Plastic, Black	1	1
	A,B	1026107	Screw, Phillips Pan Head (#10-32 x 1-3/8")	1	1
	A,B	1028485-NLA	NLA - Nut, Hex (#10-32)	1	1
4		1028846-NLA	NLA - Rivnut (#10-32)	1	1
5		1025735	Locknut (#10-32)	1	1
6		1030434-NLA	NLA - Cushion, Tubular Foam	1	1
7		1030435-NLA	NLA - Cover, Foam Cushion	1	1
8		1045267	Screw, Hex Head w/ Patch (1/4-20 x 3/4")	1	1
9		1026099	Spacer, Coved (1/4 x 11/16 x 1/2")	1	1
10	D	1020534	Insert, Threaded	1	1
11		1028707	Spring, Release - Right	1	1
11		1028708	Spring, Release - Left	1	1
12		1031884-NLA	NLA - Bushing, Black or Color Chairs (9/32 x 3/8 x 11/32")	1	1
13		1026703	Kit, Pivot/Slide Tube Mounting Hardware (Pair)	1	1
	B,C	8881058475-NL A	NLA - Footrest Support Assembly, Adult, Color - Right	1	1
	B,C	8881058474-NL A	NLA - Footrest Support Assembly, Adult, Color - Left	1	1
	B	1058477-NLA	NLA - Footrest Support Assembly, Adult, Chrome - Right	1	1
	B	1058476-NLA	NLA - Footrest Support Assembly, Adult, Chrome - Left	1	1

NOTE: A - Due to design change of Release Handle, these items are no longer used after 9/30/00.
 B - Not Shown
 C - Specify frame finish when ordering. See page titled "Frame Finishes, Touch-Up Paints and Upholstery Colors."
 D - As of 8/15/03, the Threaded Insert was revised from 3 to 5 Holes. Threaded Insert is Backward Compatible and does not require ordering in Pairs.