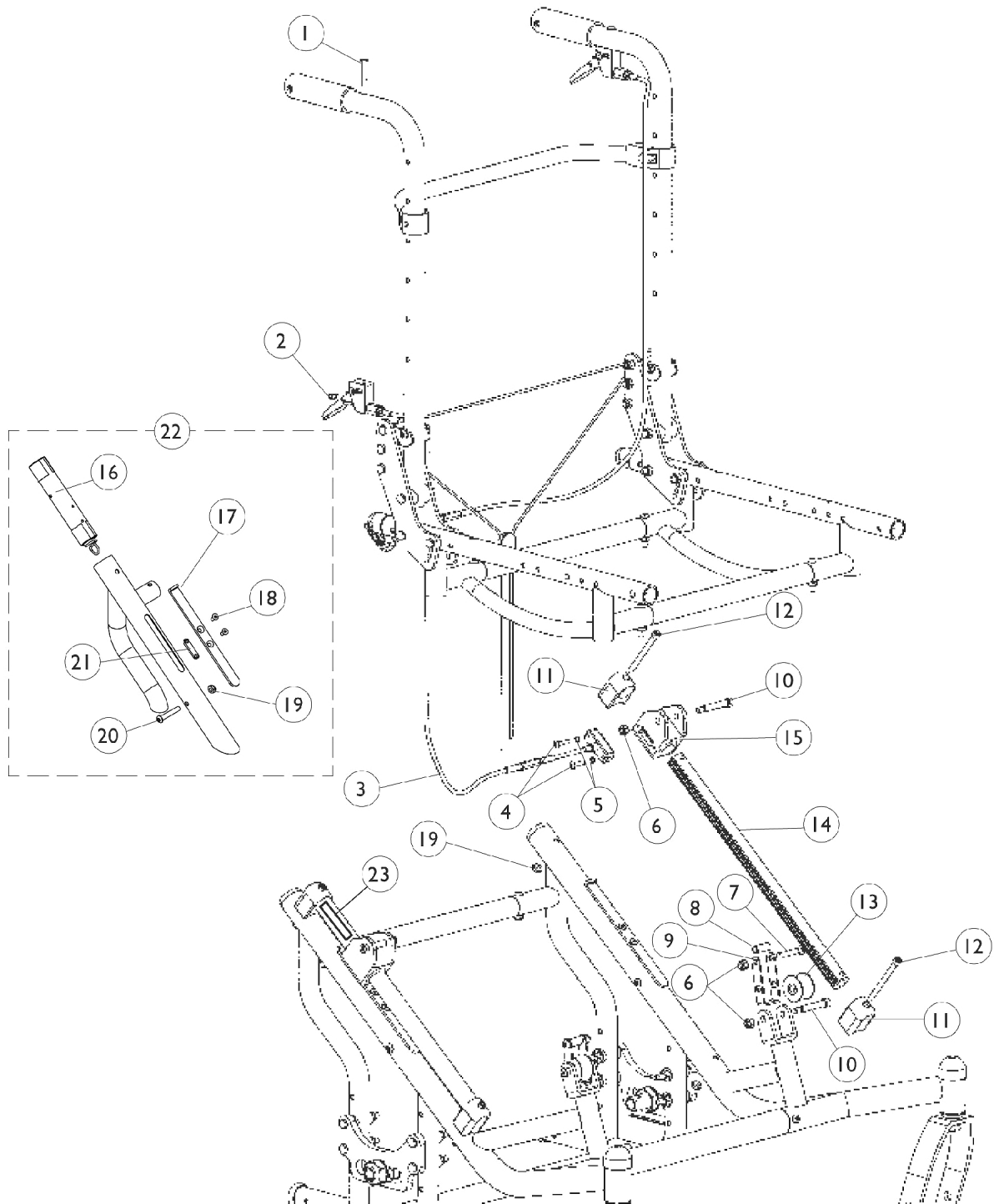


Tilt Hardware

Transport Ready Chairs requiring Tilt Hardware parts other than what is listed, must be returned to Invacare for service.



Tilt Hardware

Transport Ready Chairs requiring Tilt Hardware parts other than what is listed, must be returned to Invacare for service.

Item Number	Note	Part Number	Description	Quantity Per	
				Package	Assembly
1	C	1163311	Screw, Socket Button Head (10-32 x 1-1/4")	1	2
2		1025735	Locknut (#10-32)	1	2
3		1161550-NLA	NLA - Cable and Brake Assembly	1	2
4		1003645	Screw, Socket Button Head (#10-32 x 3/4")	1	4
5		1028527-NLA	NLA - Washer, Lock (3/16 x 5/16 x 1/32")	1	4
6		1025736	Locknut (1/4-20)	1	6
7		1008495	Screw, Socket Button Head (1/4-20 x 1-1/2")	1	2
8		1075146-NLA	NLA - Sleeve (1/4-10 x 7/8 x 1/6" O.D.)	1	2
9		1080620-NLA	NLA - Roller, Link	1	2
10		1071736	Screw, Shoulder Hex Socket Head (5/16" x 1-5/8", 1/4-20)	1	4
11	A	1080621-NLA	NLA - Stand-Off, Shaft	1	4
12		1083177-NLA	NLA - Screw, Socket Head (1/4-28 x 2-7/8")	1	4
13		1083098-NLA	NLA - Roller w/ Bushings	1	2
14		1112389-NLA	NLA - Rack, Gear, Chromed Steel (Left/Right)	1	2
15		1080622-NLA	NLA - Housing, Bearing	1	2
16		1085260-NLA	NLA - Spring and Sleeve Assembly	1	1
17		1083089-NLA	NLA - Hook, Slide	1	1
18		1085010-NLA	NLA - Screw, Socket Flat Head (#10-32 x 3/8")	1	2
19		1025765	Locknut (1/4-28)	1	1
20		1083099	Screw, Socket Button Head (1/4-28 x 1-1/2")	1	1
21	B	1083086	Spacer, Slide	1	1
22		1085621-NLA	NLA - Spring Assembly, Anterior	1	1
		1083088	Collar, Tilt Lock Out (7/8")	1	2
23		1085303-NLA	NLA - Decal, Graduated Tilt - Right	1	1
23		1085304-NLA	NLA - Decal, Graduated Tilt - Left	1	1
NOTE: A - As of 5/20/02 Gear Rack is chromed steel. Chairs built Before 5/20/02 have a gray aluminum Gear Rack. It may be necessary to order 2 each so that the new steel Gear Rack matches the existing one made from aluminum. B - Not Shown C - Includes 1080623 and 1086207.					