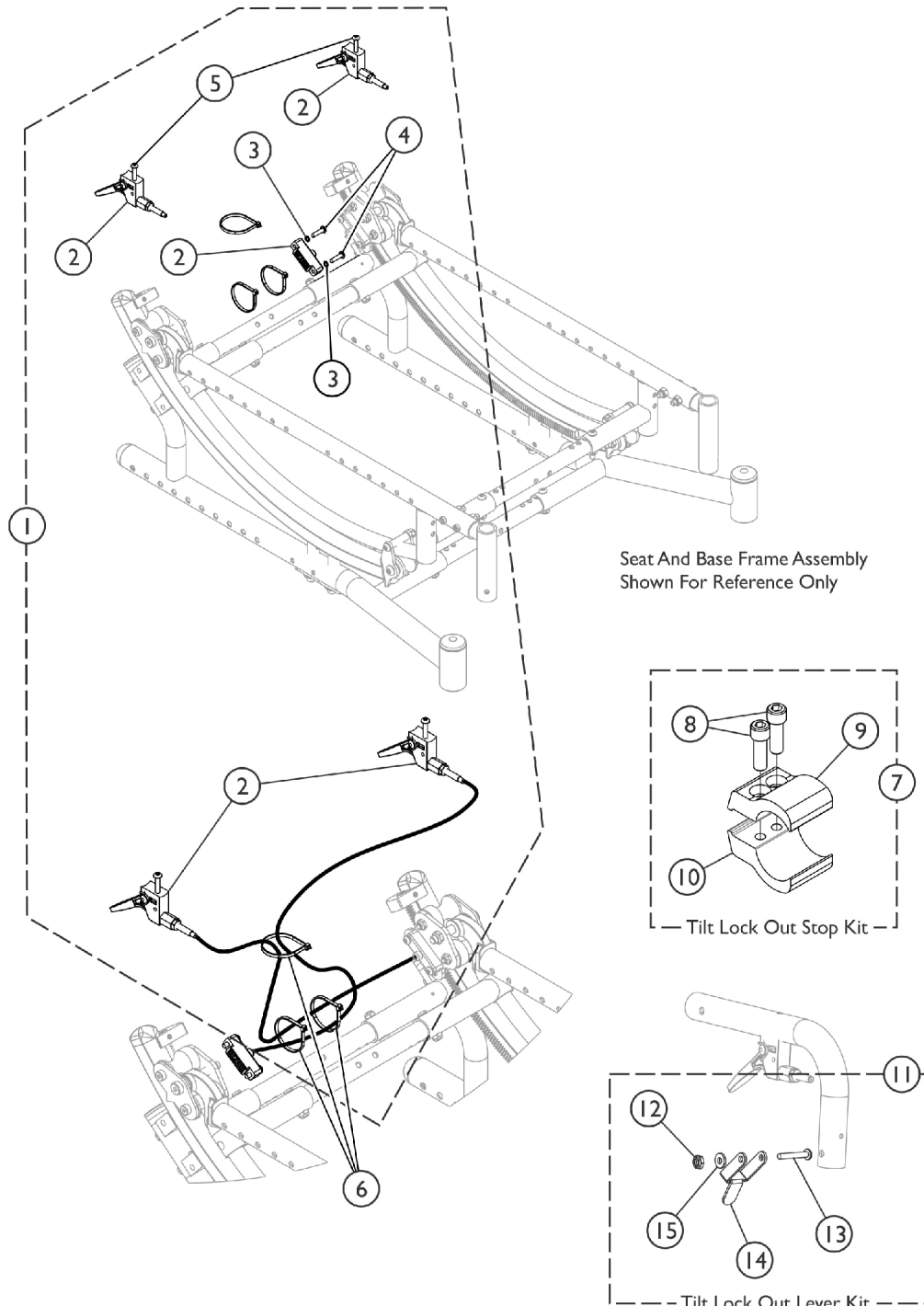


Tilt Hardware - Hand Release

If a chair is ordered as a Foot Release or a Hand Release, it CANNOT be retrofitted in the field to accept the other Tilting function. A new wheelchair must be ordered.



Tilt Hardware - Hand Release

If a chair is ordered as a Foot Release or a Hand Release, it CANNOT be retrofitted in the field to accept the other Tilting function. A new wheelchair must be ordered.

Item Number	Note	Part Number	Description	Quantity Per	
				Package	Assembly
1	A	1151366	Kit, Tilt Cable Release w/ Hardware (Pair)	1	1
2			Tilt Release Cable Assembly	1	2
3			NLA - Washer, Lock (3/16 x 5/16 x 1/32")	1	4
4			Screw, Socket Button Head (#10-32 x 3/4")	1	4
5			Screw, Socket Button Head (10-32 x 1-1/4")	1	2
6	B	1095503-NLA	NLA - Package, Tie Wrap (5-5/8" L)	10	1
7		1153995	Kit, Tilt Lockout Collar, Black	1	1
8			Screw, Socket Head (1/4-20 x 1/2")	1	1
9			Collar, Lockout Tilt, Black	1	1
10			Collar, Lockout Tilt, Threaded, Black	1	1
11	C	1118578	Kit, Tilt Lock Out Lever with Hardware	1	1
12			NLA - Nut, Hex Lock (#6-32)	1	1
13			NLA - Screw, Phillips Pan Head (#6-32 x 7/8")	1	1
14			NLA - Lever, Lock Out Tilt, Silver Vein	1	1
15			NLA - Washer, Flat (5/32 x 3/8 x 1/32")	1	1
NOTE: A - Includes items 2-5 B - Includes items 8-10. Chair requires 2 ea. of item 7. (Option TLC) C - Includes items 12-15. Chair requires 2 ea. of item 11. (Option RLL)					