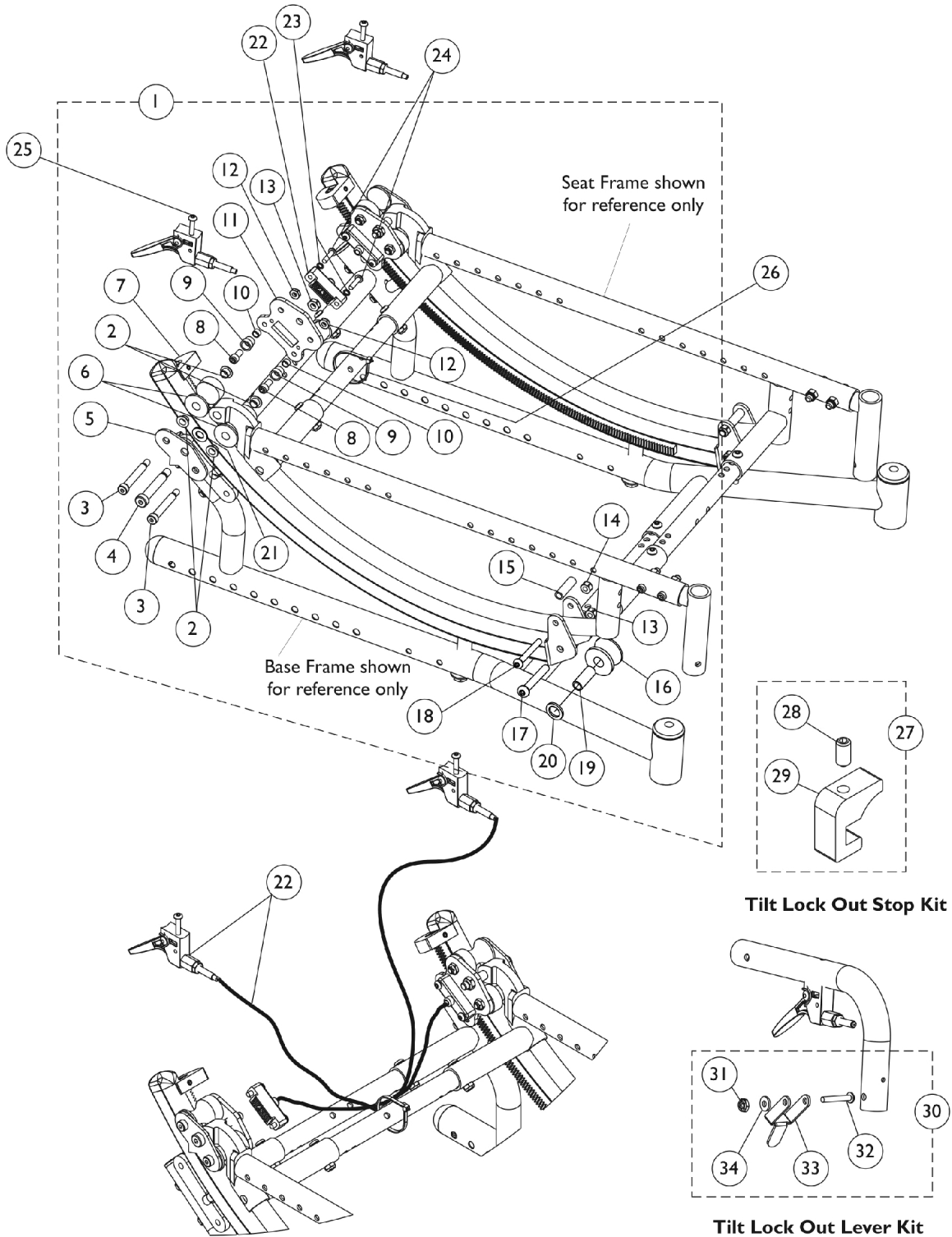


Tilt Hardware - Hand Release

After 5/21/06

Invacare does not service any parts associated with the TRRO/TRBKTS option including tilt hardware, belts, belt attachment hardware, tie-down brackets, etc. Chairs with the Transport Ready or Transport Bracket option must be returned to Invacare for service. The Tilt Release Cable Assembly may be replaced and serviced by an authorized Invacare dealer. If a wheelchair is ordered as a Foot Release or a Hand Release, it CANNOT be retrofitted in the field to accept the other Tilting function. A new wheelchair must be ordered.



Tilt Lock Out Stop Kit

Tilt Lock Out Lever Kit

Tilt Hardware - Hand Release

After 5/21/06

Invacare does not service any parts associated with the TRRO/TRBKTS option including tilt hardware, belts, belt attachment hardware, tie-down brackets, etc. Chairs with the Transport Ready or Transport Bracket option must be returned to Invacare for service. The Tilt Release Cable Assembly may be replaced and serviced by an authorized Invacare dealer. If a wheelchair is ordered as a Foot Release or a Hand Release, it CANNOT be retrofitted in the field to accept the other Tilting function. A new wheelchair must be ordered.

Item Number	Note	Part Number	Description	Quantity Per	
				Package	Assembly
1	A	1142080-NLA	NLA - Kit, Tilt Hardware	1	1
2			Bushing, Flange	1	8
3			NLA - Screw, Shoulder Hex Socket Head (5/16" x 1-3/4", 1/4-20)	1	4
4			Screw, Shoulder Hex Socket Head (3/8 x 1-3/4", 5/16-18)	1	2
5			Plate, Tilt Outside	1	2
6			Roller, Rear	1	4
7			Stop, Tilt, Black	1	2
7			Screw, Socket Set Cup Point (1/4-28 x 1/2")	1	2
8			NLA - Screw, Socket Head (1/4-28 x 1/2")	1	4
9			NLA - Upstop, Roller	1	4
10			Bushing (1/4 x 5/16 x 3/16")	1	4
11			Plate, Tilt Inside	1	2
12			Locknut (1/4-20)	1	4
13			Locknut (5/16-18)	1	4
14			Locknut (1/4-20)	1	2
15			NLA - Bushing, Nylon (1/4 x 3/8 x 1-1/4")	1	2
16			Roller, Nylon, Black	1	2
17			Screw, Socket Button Head (5/16-18 x 2")	1	2
18			Screw, Socket Button Head (1/4-20 x 1-7/8")	1	2
19			Bushing, Steel (5/16 x 27/64 x 1-1/4")	1	2
20			Washer, Nylon (1/2 x 3/4 x 3/32")	1	2
21		Washer, Nylon (3/8 x 3/4 x 1/16")	1	2	
	D	1151366	Kit, Tilt Cable Release w/ Hardware (Pair)	1	1
22			Tilt Release Cable Assembly	1	2
23			NLA - Washer, Lock (3/16 x 5/16 x 1/32")	1	4
24			Screw, Socket Button Head (#10-32 x 3/4")	1	4
25			Screw, Socket Button Head (10-32 x 1-1/4")	1	2
22		1126294	Tilt Release Cable Assembly	1	1
26		1095503-NLA	NLA - Package, Tie Wrap (5-5/8" L)	10	1
27	B	1127786-NLA	NLA - Kit, Tilt Lock Out Stop	1	1
28			Screw, Socket Set Cup Point (1/4-28 x 1/2")	1	1
29			Stop, Tilt, Black	1	1
30	C	1118578	Kit, Tilt Lock Out Lever with Hardware	1	1
31			NLA - Nut, Hex Lock (#6-32)	1	1
32			NLA - Screw, Phillips Pan Head (#6-32 x 7/8")	1	1
33			NLA - Lever, Lock Out Tilt, Silver Vein	1	1
34			NLA - Washer, Flat (5/32 x 3/8 x 1/32")	1	1

Tilt Hardware - Hand Release

After 5/21/06

Invacare does not service any parts associated with the TRRO/TRBKTS option including tilt hardware, belts, belt attachment hardware, tie-down brackets, etc. Chairs with the Transport Ready or Transport Bracket option must be returned to Invacare for service. The Tilt Release Cable Assembly may be replaced and serviced by an authorized Invacare dealer. If a wheelchair is ordered as a Foot Release or a Hand Release, it **CANNOT** be retrofitted in the field to accept the other Tilting function. A new wheelchair must be ordered.

NOTE: A - Includes items 2-21. Includes hardware for right and left sides. B - Includes items 28-29 C - Includes items 31-34 D - Includes items 22-25.
