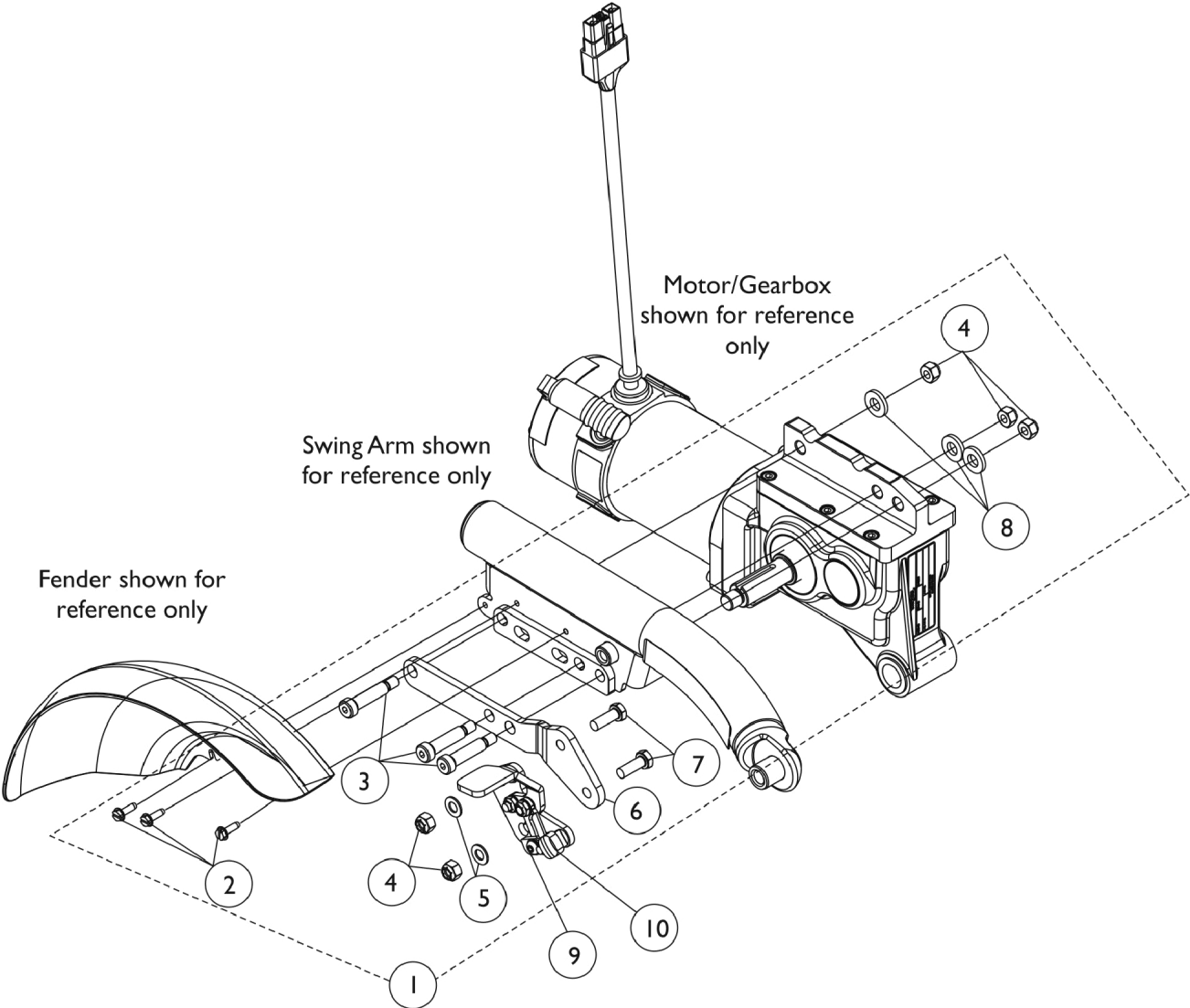


# Wheel Lock Assembly

TDX SP/SP-GT with 4-Pole Motor (Before 05/13/11) (Canada Before 7/1/11)



# Wheel Lock Assembly

**TDX SP/SP-GT with 4-Pole Motor (Before 05/13/11) (Canada Before 7/1/11)**

Item Number	Note	Part Number	Description	Quantity Per	
				Package	Assembly
1	A	1145072-NLA	NLA - Kit, Wheel Lock Mounting Hardware - Right	1	1
2			Screw, Slotted Hex Washer Head (#10-32 x 5/8")	1	3
3			Screw, Shoulder Hex Socket (3/8 x 1-1/4", 5/16-18)	1	3
4			Locknut (5/16-18)	1	5
5			Washer, Flat (5/16 x 5/8 x 1/16")	1	2
6			Bracket, Wheel Lock, Black - Right	1	1
7			NLA - Screw, Hex Head w/ Patch (5/16-18 x 7/8")	1	2
8			NLA - Washer, Steel (7/16 x 13/16 x 1/8")	1	3
1	A	1145073-NLA	NLA - Kit, Wheel Lock Mounting Hardware - Left	1	1
2			Screw, Slotted Hex Washer Head (#10-32 x 5/8")	1	3
3			Screw, Shoulder Hex Socket (3/8 x 1-1/4", 5/16-18)	1	3
4			Locknut (5/16-18)	1	5
5			Washer, Flat (5/16 x 5/8 x 1/16")	1	2
6			Bracket, Wheel Lock, Black - Left	1	1
7			NLA - Screw, Hex Head w/ Patch (5/16-18 x 7/8")	1	2
8			NLA - Washer, Steel (7/16 x 13/16 x 1/8")	1	3
9	B	1139885	Wheel Lock Assembly - Right	1	1
9	B	1139886	Wheel Lock Assembly - Left	1	1
10		1101725	Cap, Brake Lever End, Black	1	1
10		1130584	Package, Cap, Brake Lever End, Black	10	1

NOTE: A - Includes items 2-8  
 B - Wheel Lock Assembly includes the Brake Lever End Cap item #10 part number 1101725.