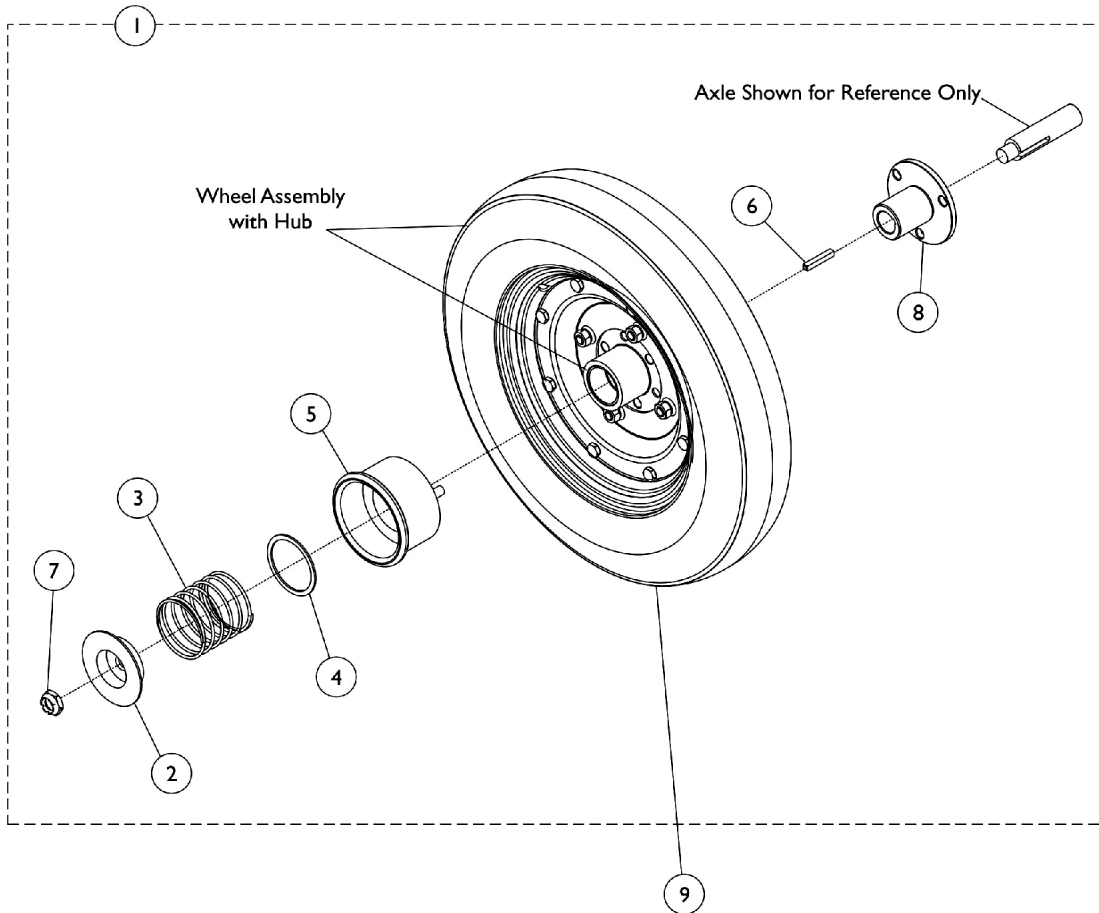


# Free Wheel Hub Mount and Hardware (14" x 3") - TDX SP/SP-GT (Canada Before 7/1/11)

Wheel Assemblies are different between a Non-Free Wheel Hub and a Free Wheel Hub option. Wheel Assemblies and item #1 Free Wheel Hub Assembly must be ordered when adding the Free Wheel Hub Assembly in the field for the first time.



## Free Wheel Hub Mount and Hardware (14" x 3") - TDX SP/SP-GT (Canada Before 7/1/11)

Wheel Assemblies are different between a Non-Free Wheel Hub and a Free Wheel Hub option. Wheel Assemblies and item #1 Free Wheel Hub Assembly must be ordered when adding the Free Wheel Hub Assembly in the field for the first time.

Item Number	Note	Part Number	Description	Quantity Per	
				Package	Assembly
1	A	1163133	Free Wheel Hub Assembly	1	1
2		1078090	Cup, Washer	1	1
3		1079002-NLA	NLA - Spring, Compression (2-3/32 x 2-1/4 x 3/32")	1	1
4		1079001-NLA	NLA - Washer, Flat (1-13/16 x 2-1/8 x 1/16")	1	1
5		1077022	Knob, Engagement, Black	1	1
6		1000180	Key (3/16 x 1-1/4")	1	1
7		1001979	Locknut (1/2-20)	1	1
8		1163132	Sleeve, Axle	1	1
9	B	1081358	Drive Wheel Assembly, Pneumatic w/ Hub, Grey Tire/Black Rim (14 x 3")	1	1
	C	1079298	Drive Wheel Assembly, Pneumatic, Grey Tire/Black Rim (14 x 3")	1	1
		1039652	Tire, Pneumatic, Grey (14" x 3")	1	1
		1039651	Tube, Inner, Black (14 x 3")	1	1
9	B	1081359	Drive Wheel Assembly, Flat Free w/ Hub, Grey Tire/Black Rim (14 x 3")	1	1
	C	1079301	Drive Wheel Assembly, Flat Free, Grey Tire/Black Rim (14 x 3")	1	1
		1101754	Tire w/ Foam Fill Insert, Grey (14" x 3")	1	1

NOTE: A - Includes items 2-8.  
 B - Wheel Assembly with Hub and item #1 Free Wheel Hub Assembly is required when changing from a Non-Free Wheel Hub to a Free Wheel Hub Assembly.  
 C - Wheel Assembly without the Hub can be used in the field for customers that originally ordered a FHUB option on-chair and wants to assemble their existing Hub to the new Wheel Assembly