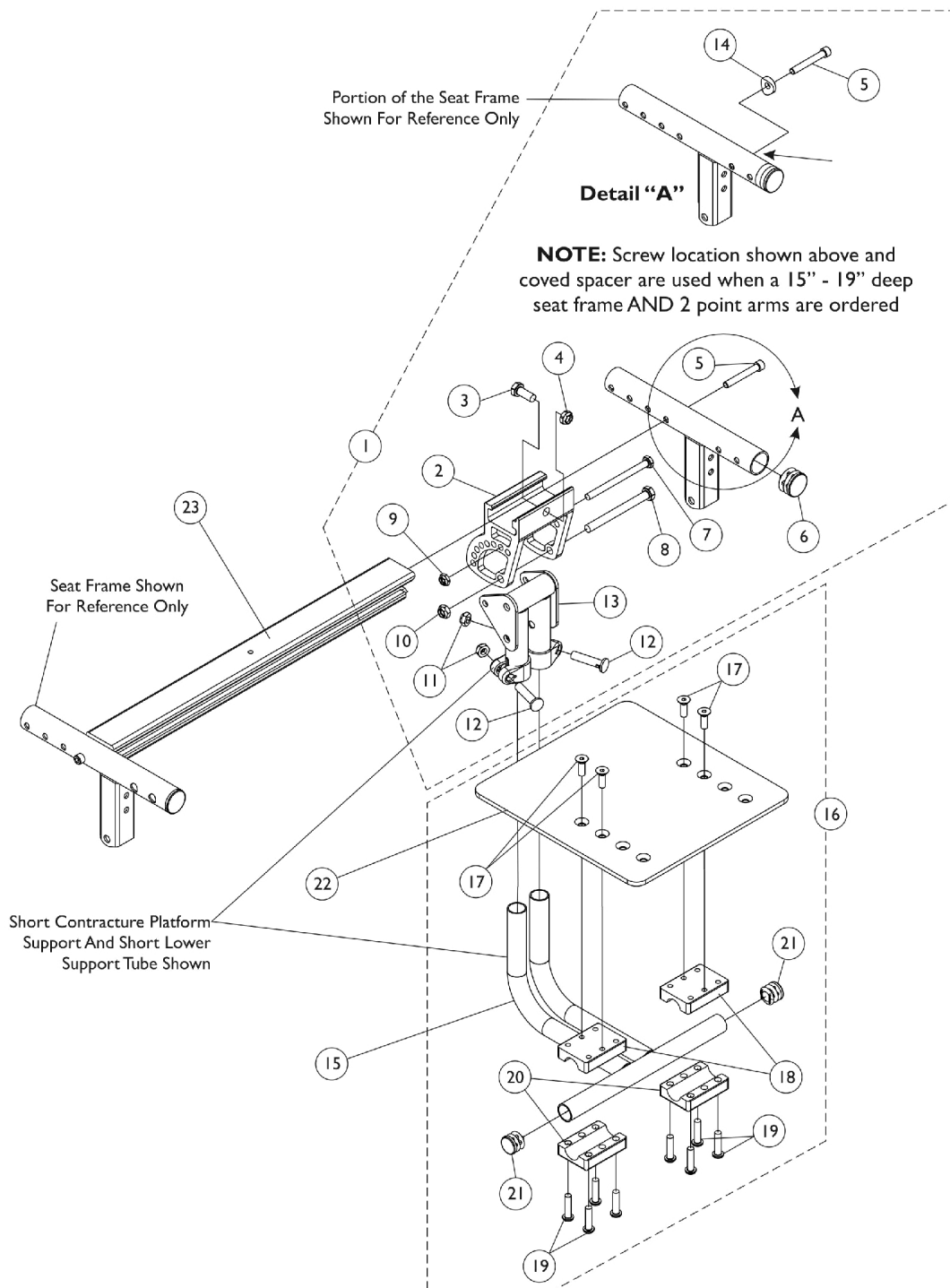


# Contracture Platform Footrest

When a Customer is requesting to add a Contracture Platform Footrest to a wheelchair in the field for the first time, the wheelchair must be returned to Invacare for installation.



## Contracture Platform Footrest

**When a Customer is requesting to add a Contracture Platform Footrest to a wheelchair in the field for the first time, the wheelchair must be returned to Invacare for installation.**

Item Number	Note	Part Number	Description	Quantity Per	
				Package	Assembly
1	A	1164120	Kit, Contracture Platform Hardware, Short	1	1
2			Bracket, Contracture Support, Black	1	1
3			Screw, Hex Head (5/16-24 x 3/4")	1	1
4			Locknut (5/16-24)	1	1
5			NLA - Screw (1/4-20 x 1-3/4")	1	2
6			Plug Button, Black (1")	1	2
7			Screw, Hex Head (1/4-20 x 3-1/4")	1	1
8			NLA - Screw, Hex Head (5/16-24 x 3-1/4")	1	1
9			Locknut, Thin (1/4-20)	1	1
10			Locknut (5/16-24)	1	1
11			Locknut (5/16-24)	1	2
12			Bolt, Lug (5/16-24 x 1-3/8")	1	2
13			Support, Contracture Platform, Black, Short	1	1
14			Spacer, Coved (1/4 x 11/16 x 1/2")	1	2
1	A	1164121	Kit, Contracture Platform Hardware, Long	1	1
2			Bracket, Contracture Support, Black	1	1
3			Screw, Hex Head (5/16-24 x 3/4")	1	1
4			Locknut (5/16-24)	1	1
5			NLA - Screw (1/4-20 x 1-3/4")	1	1
6			Plug Button, Black (1")	1	2
7			Screw, Hex Head (1/4-20 x 3-1/4")	1	1
8			NLA - Screw, Hex Head (5/16-24 x 3-1/4")	1	1
9			Locknut, Thin (1/4-20)	1	1
10			Locknut (5/16-24)	1	1
11			Locknut (5/16-24)	1	2
12			Bolt, Lug (5/16-24 x 1-3/8")	1	2
13			NLA - Support, Contracture Platform, Black, Long	1	1
14			Spacer, Coved (1/4 x 11/16 x 1/2")	1	2
15	B	1127822	Tube, Support, Lower, 110 Degree, Black, Short	1	1
15		1052441	Tube, Support, Lower, 110 Degree, Black, Long	1	1
16	B	1127695	Kit, Contracture Footboard Hardware	1	1
17			Screw, Socket Flat Head (1/4-20 x 3/4")	1	4
18			NLA - Half Clamp, Threaded	1	2
19			Screw, Socket Button Head (1/4-20 x 1")	1	8
20			NLA - Half Clamp, Non-Threaded	1	2
21			Plug Button, Black (3/4")	1	2
22		1044076	Footboard	1	1
23		See Chart	#23 Contracture Crossbrace Brackets	1	1

NOTE: A - Includes items 2-14. Item #14 Coved Spacer used only when a 15"-19" deep seat frame AND 2 point arms are used. 2 point arms do not include the "T" Arms or the Cantilever Arms.

B - Includes items 17-21

## Contracture Platform Footrest

When a Customer is requesting to add a Contracture Platform Footrest to a wheelchair in the field for the first time, the wheelchair must be returned to Invacare for installation.

### #23 Contracture Crossbrace Brackets

Seat Width	Part Number
12" Wide	1163810
13" Wide	1163811
14" Wide	1163812
15" Wide	1163813
16" Wide	1163814
17" Wide	1163815
18" Wide	1163436
19" Wide	1163816
20" Wide	1163817
21" Wide	1163818
22" Wide	1163819