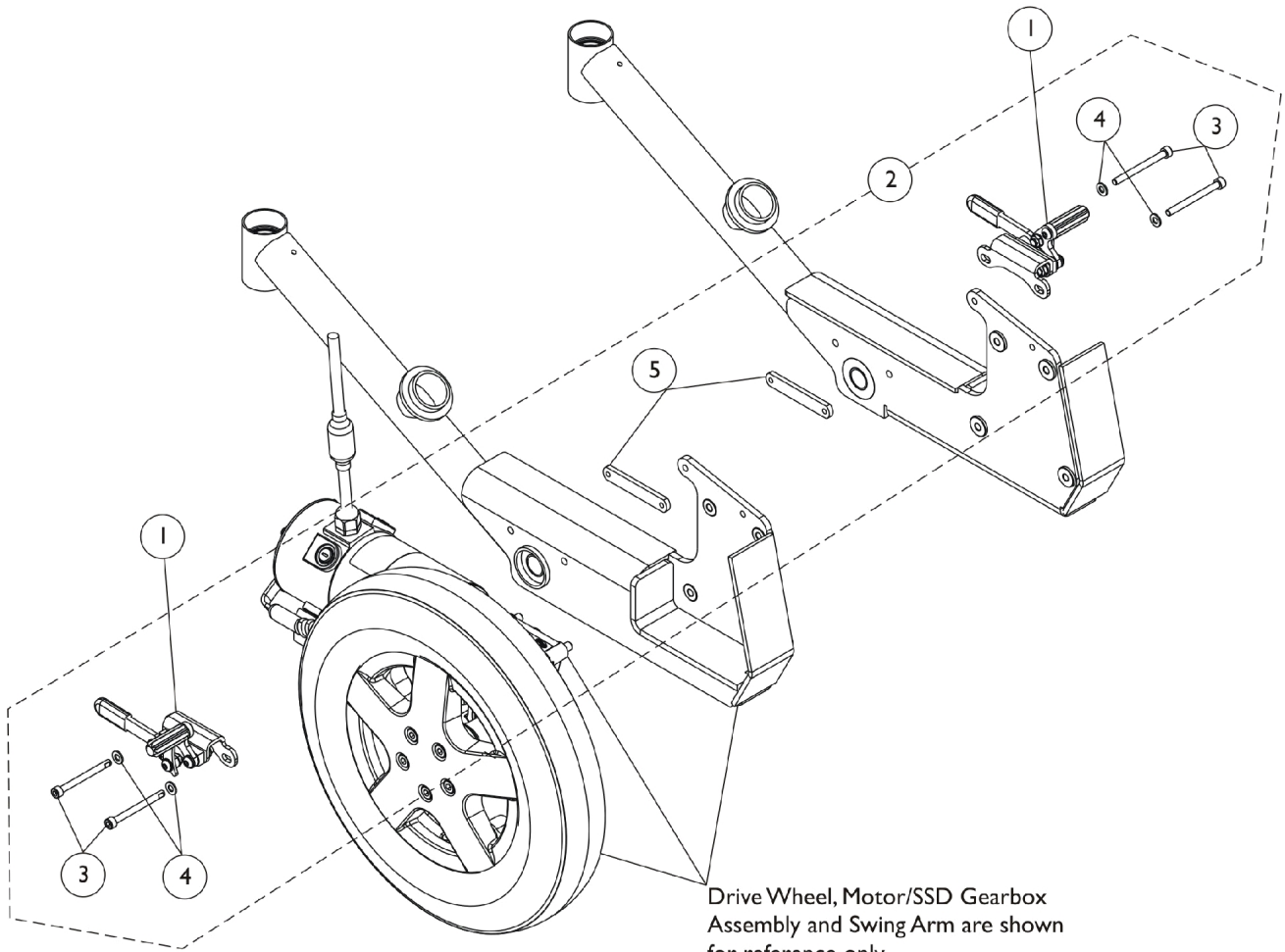


Wheel Lock Assembly



Drive Wheel, Motor/SSD Gearbox
Assembly and Swing Arm are shown
for reference only

Wheel Lock Assembly

Item Number	Note	Part Number	Description	Quantity Per	
				Package	Assembly
1	C	1169217-NLA	NLA - Wheel Lock Assembly - Right	1	1
1	C	1169218-NLA	NLA - Wheel Lock Assembly - Left	1	1
	A	1127688	Package, Plastic Tip, Black	10	1
2	B	1170676-NLA	NLA - Kit, Wheel Lock Mounting Hardware (Pair)	1	1
3			Screw, Socket Head Cap w/ Patch (M6 x 1 x 65mm)	1	4
4			Washer (1/4 x 1/2 x 1/16")	1	4
5			Nut, Weld (M6 x 1 x 69.60mm Spacing)	1	2

NOTE: A - Not Shown.
 B - Includes items 3-5.
 C - Holes were added to the Swing Arms on 1/7/11 to accommodate Wheel Lock Assemblies. Wheelchair manufactured before 1/7/11 must be returned to Invacare in order to replace the Swing Arms and then have the Wheel Locks installed.