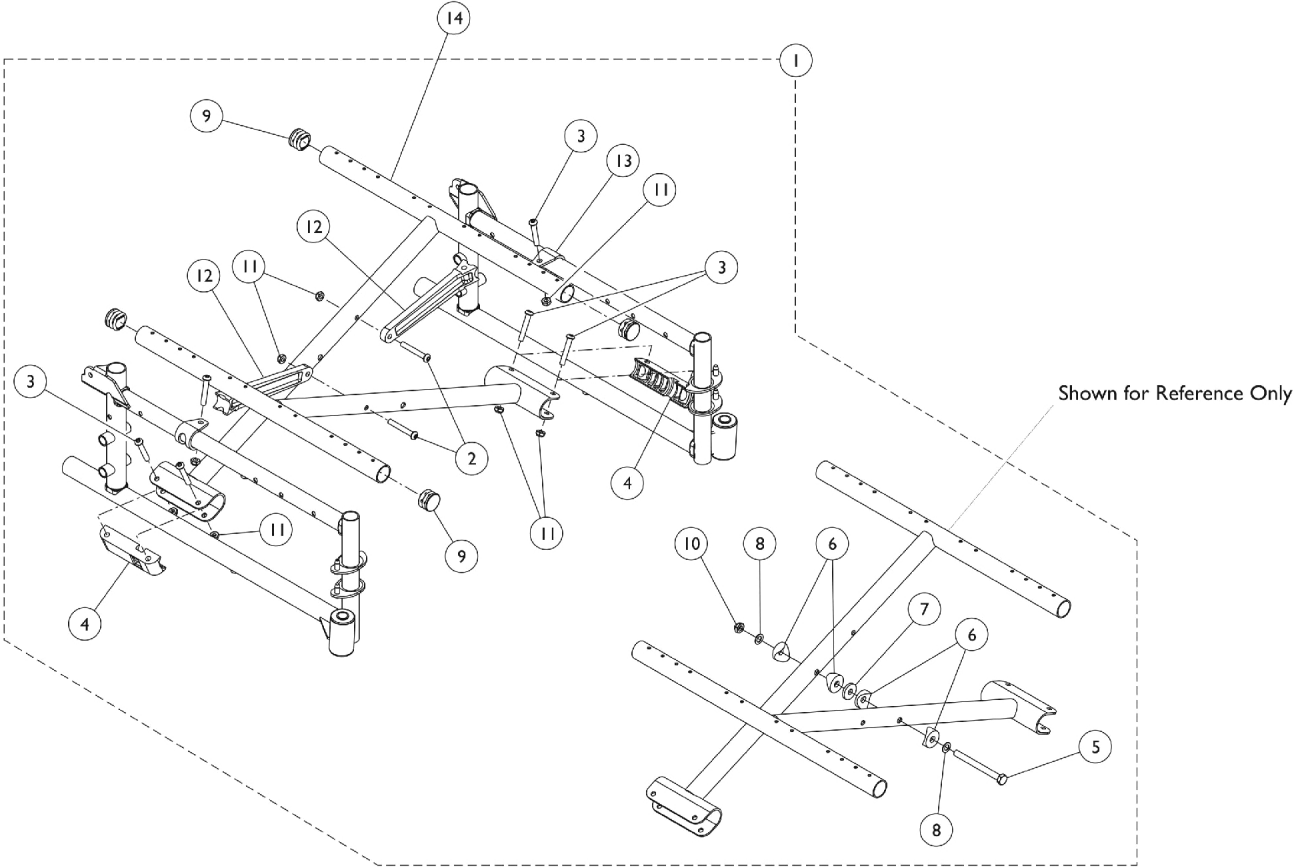


Crossbraces and Crossbrace Hardware



Crossbraces and Crossbrace Hardware

Item Number	Note	Part Number	Description	Quantity Per	
				Package	Assembly
1	A,C,E	1046925	Hardware, Crossbrace (14 - 15" W)	1	1
1	B,C,D	1110085	Hardware, Crossbrace, Hemi (14 - 15" W)	1	1
1	A,C,E	1034077	Hardware, Crossbrace (16 - 18" W)	1	1
1	B,C,D	1110086	Hardware, Crossbrace, Hemi (16 - 18" W)	1	1
1	A,C	1120639	Hardware, Crossbrace (19" W)	1	1
1	A,C,E	1034078	Hardware, Crossbrace (20 - 22" W)	1	1
1	B,C,D	1110087	Hardware, Crossbrace, Hemi (20 - 22" W)	1	1
2		1001762	Screw, Socket Button Head (1/4-20 x 1-3/4")	1	2
3		1008495	Screw, Socket Button Head (1/4-20 x 1-1/2")	1	4
4		1012172-NLA	NLA - Clamp, Saddle	1	2
5		1016261	Screw, Hex Head (5/16-24 x 3-1/4")	1	1
6		1016263	Spacer, Coved (3/4 x 1 x 1/2")	1	4
7		1016301	Washer, Nylon (5/16 x 7/8 x 1/8")	1	1
8		1016652	Washer (5/16 x 9/16 x 1/32")	1	2
9		1029501	Plug Button, Black (1")	1	4
10		60264X001	Locknut (5/16-24)	1	1
11		60275X000	Locknut (1/4-20)	1	8
12	A	1046501	Link, Pivot, Black (14 - 15" W)	1	2
12	B	1110000	Link, Pivot, Black (14 - 15" W)	1	2
12	A	1012173	Link, Pivot, Black (16 - 18" W)	1	2
12	B	1110001	Link, Pivot, Black (16 - 18" W)	1	2
12	A	1046503	Link, Pivot, Black (19" W)	1	2
12	A	1018238	Link, Pivot, Black (20 - 22" W)	1	2
12	B	1110002	Link, Pivot, Black (20 - 22" W)	1	2
13		1012180	Bracket, Pivot, Black	1	2
14		See Chart	Crossbraces - 9000SL	1	2
14		See Chart	Crossbraces - 9000XDT	1	2
14		See Chart	Crossbraces - 9000XT	1	2
14		See Chart	Crossbraces - 9000XT Recliner	1	2
NOTE: A - For use on chairs manufactured 4/1/03 thru 1/23/05 with two piece Pivot Link and Pivot Bracket design. The exception is the 9XT 19" wide and 9XDT 20" & 22" wide models that continue to use the two piece Pivot Link and Pivot Bracket Design. B - For use on chairs manufactured before 4/1/03 and after 1/23/05 with one piece Pivot Link design. C - Includes items 2 thru 13. D - Does not include item 13; is not needed for the assembly. E - Pivot Link and Bracket sold separately.					
NOTE: Crossbrace Hardware Kit contains enough hardware for complete set of Crossbraces.					

9000SL

Chair Size	Part Number
16" Wide X 16" Deep 16" Wide x 18" Deep	1109960
18" Wide X 16" Deep 18" Wide X 18" Deep	1109961
20" Wide X 16" Deep 20" Wide X 18" Deep 20" Wide X 20" Deep	1109962

Crossbraces and Crossbrace Hardware

NOTE: Due to style change, an 18" deep chair manufactured before 6/17/02 will require a new seat extension. See category titled, "Seat Extension Kits."

NOTE: Crossbrace part numbers are set up as a single part and requires two each in quantity per assembly.

9000 XT

Chair Size	Part Number
14" Wide X 16" Deep 14" Wide X 17" Deep 14" Wide X 18" Deep	1123881
15" Wide X 16" Deep 15" Wide X 17" Deep 15" Wide X 18" Deep	1046110
16" Wide X 16" Deep 16" Wide X 17" Deep 16" Wide X 18" Deep	1123882
17" Wide X 16" Deep 17" Wide X 17" Deep 17" Wide X 18" Deep	1123883
18" Wide X 16" Deep 18" Wide X 17" Deep 18" Wide X 18" Deep	1123884
19" Wide X 16" Deep 19" Wide X 17" Deep 19" Wide X 18" Deep	1122090
20" Wide X 16" Deep 20" Wide X 17" Deep 20" Wide X 18" Deep	1109962
22" Wide X 16" Deep 22" Wide X 17" Deep 22" Wide X 18" Deep	1109963

NOTE: Due to style change, a 19-20" wide and a 17-18" deep chair manufactured before 8/6/04 will require a new seat extension. See category titled, "Seat Extension Kits."

NOTE: Due to style change, an 18" deep chair manufactured before 6/17/02 will require a new seat extension. See category titled, "Seat Extension Kits."

NOTE: Crossbrace part numbers are set up as a single part and requires two each in quantity per assembly.

Crossbraces and Crossbrace Hardware

9000XT Recliner

Chair Size	Part Number
14" Wide X 16" Deep 14" Wide X 17" Deep 14" Wide X 18" Deep	1109959
16" Wide X 16" Deep 16" Wide X 17" Deep 16" Wide X 18" Deep	1109960
18" Wide X 16" Deep 18" Wide X 17" Deep 18" Wide X 18" Deep	1109961
19" Wide X 16" Deep 19" Wide X 17" Deep 19" Wide X 18" Deep	1122090
20" Wide X 16" Deep 20" Wide X 17" Deep 20" Wide X 18" Deep	1109962
22" Wide X 16" Deep 22" Wide X 17" Deep 22" Wide X 18" Deep	1109963

NOTE: Due to style change, a 17-18" deep chair manufactured before 8/6/04 will require a new seat extension. See category titled, "Seat Extension Kits."

NOTE: Due to style change, a 19-20" wide and a 17-18" deep chair manufactured before 8/6/04 will require a new seat extension. See category titled, "Seat Extension Kits."

NOTE: Due to style change, an 18" deep chair manufactured before 6/17/02 will require a new seat extension. See category titled, "Seat Extension Kits."

NOTE: Crossbrace part numbers are set up as a single part and requires two each in quantity per assembly.

9000 XDT

Chair Size	Part Number
16" Wide x 16" Deep 16" Wide x 17" Deep 16" Wide x 18" Deep	1120628
16" Wide x 19" Deep 16" Wide x 20" Deep	1120627
17" Wide x 16" Deep 17" Wide x 17" Deep 17" Wide x 18" Deep	1120630
17" Wide x 19" Deep 17" Wide x 20" Deep	1120629
18" Wide x 16" Deep 18" Wide x 17" Deep 18" Wide x 18" Deep	1120632
18" Wide x 19" Deep 18" Wide x 20" Deep	1120631
19" Wide x 16" Deep 19" Wide x 17" Deep 19" Wide x 18" Deep	1120633

Crossbraces and Crossbrace Hardware

9000 XDT

Chair Size	Part Number
19" Wide x 19" Deep 19" Wide x 20" Deep	1120634
20" Wide x 16" Deep 20" Wide x 17" Deep 20" Wide x 18" Deep	1120635
20" Wide x 19" Deep 20" Wide x 20" Deep	1120636
22" Wide x 16" Deep 22" Wide x 17" Deep 22" Wide x 18" Deep	1120638
22" Wide x 19" Deep 22" Wide x 20" Deep	1120637
<p>NOTE: Due to style change, a 17-18" deep chair manufactured before 8/6/04 will require a new seat extension. See category titled, "Seat Extension Kits."</p> <p>NOTE: Due to style change, a 19-20" wide and a 17-18" deep chair manufactured before 8/6/04 will require a new seat extension. See category titled, "Seat Extension Kits."</p> <p>NOTE: Due to style change, an 18" deep chair manufactured before 6/17/02 will require a new seat extension. See category titled, "Seat Extension Kits."</p> <p>NOTE: Crossbrace part numbers are set up as a single part and requires two each in quantity per assembly.</p>	