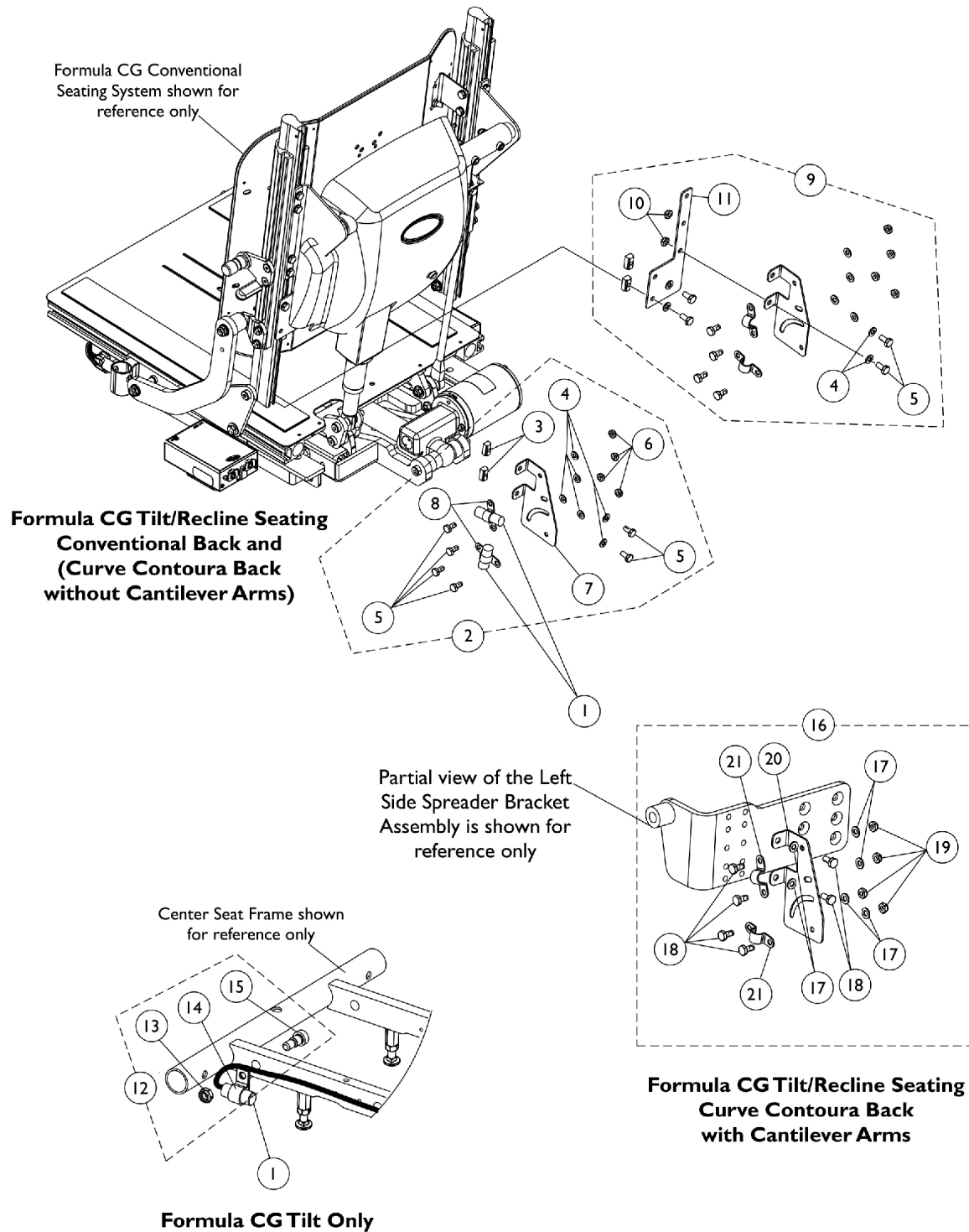


Mercury Free Switches and Hardware

For Conventional Actuator Motor only



Mercury Free Switches and Hardware For Conventional Actuator Motor only

Item Number	Note	Part Number	Description	Quantity Per	
				Package	Assembly
1	A	1168753	Switch, Drive Lockout Mercury Free Ball (MK6i) (18" L)	1	2
1	D	1140099	Switch, Drive Lockout Mercury Free Ball (MK6i) (50" L)	1	1
2	B	1146289	Kit, Switch Mounting Hardware (Formula CG Tilt/Recline Seating System)	1	1
3			T-Nut (1/4-20)	1	2
4			Washer (1/4 x 1/2 x 1/16")	1	6
5			Screw, Hex Head w/ Patch (1/4-20 x 1/2")	1	6
6			Locknut (1/4-20)	1	4
7			Bracket, Mercury Switch Mounting, Black	1	1
8			NLA - Bracket, Switch Mounting, Black	1	2
9	F	1170695	NLA - Kit, Adapter Plate and Hardware For Conventional Back w/ Cantilever Arms	1	1
4			Washer (1/4 x 1/2 x 1/16")	1	2
5			Screw, Hex Head w/ Patch (1/4-20 x 1/2")	1	2
10			Locknut (1/4-20)	1	2
11			Plate, Adapter, Black, For Conventional Back w/ Cantilever Arms	1	1
12	C	1121712	Kit, Switch Mounting Hardware (Formula CG Tilt Only)	1	1
13			Locknut (5/16-18)	1	1
14			NLA - Bracket, Cable/Wire Mounting, Black	1	1
15			Screw, Shoulder Hex Socket Head w/ Patch (3/8" x 3/8", 5/16-18)	1	1
16	E	1169836-NLA	NLA - Kit, Switch Mounting Hardware	1	1
17			Washer (1/4 x 1/2 x 1/16")	1	6
18			Screw, Hex Head w/ Patch (1/4-20 x 1/2")	1	6
19			Locknut (1/4-20)	1	4
20			Bracket, Mercury Switch Mounting, Black	1	1
21			NLA - Bracket, Switch Mounting, Black	1	2

NOTE: A - Tilt and Recline seating systems use a quantity of (2) mercury free ball switches and are shorter length than the Tilt Only version.
B - Includes items 3-8. When Cantilever Arms are used with a Conventional Back, item #9 must also be ordered to provide complete mounting hardware
C - Includes items 13-15.
D - Used for Tilt Only seating systems.
E - Includes items 17-21. This mounting hardware is only used for Contoura Seating Systems that have Cantilever Arms. The Cantilever Arms attach to the Spreader Bracket Assembly that is partially shown.
F - Includes items 4, 5, 10 and 11. When Cantilever Arms are used with a Conventional Back, item #2 in addition to item #9 Hardware is used. Item #9 illustrates how all the hardware lays out when Cantilever Arms are used.